

标题: TJC20085 系列连接器

Title: TJC20085 Connector

目录

Index

1. 更改履历 Change record
2. 范围 Scope
3. 产品描述 Product description
4. 相关标准 Related standards
5. 参数范围 Parameter ratings
6. 产品性能 Performance
7. 测试分组 Test sequences

中国·浙江省乐清市虹桥镇幸福东路 1098 号 合兴工业园 1098, Xingfu `Road(East), CWB Industrial Zone, Hongqiao, Yueqing, Zhejiang 325608, China Tel: 86-577-61313157 (Development Dept.) Tel: 86-577-62312253 (Sales Dept.)	<u>制定 Edit:</u> <u>汪乃浩 2022. 3. 12</u>	<u>产品名称 Product name:</u> <u>TJC20085 系列连接器</u>
	<u>审核 Check:</u> <u>王曲 2022. 3. 12</u>	<u>编号 Document No.:</u> <u>PS4118</u>
	<u>批准 Approval:</u> <u>刘冬旭 2022. 3. 12</u>	<u>版本 Revision:</u> <u>V2</u>



产品规格书

PRODUCT SPECIFICATION

1.更改履历 Change record

版本号 Version No.	更改前描述 Description before modification	更改后描述 Description after modification	更改人/日期 Reviser/Date
V0	/	First release	章晨桦 2021/09/26
V1	/	Update specifications and part no according to new naming specifications	汪乃浩 2022/03/12
V2	/	根据新命名规范更新产品名称和规格 Update specifications and part no according to new naming specifications	王曲 2022/09/08 WangQu 2022/09/08

产品名称 Product name	TJC20085 系列连接器	编号 Document No.	PS4118	版本号 Version No.	V1
----------------------	----------------	--------------------	--------	--------------------	----



产品规格书

PRODUCT SPECIFICATION

2.适用范围 Scope

本产品规格书适用于浙江合兴电子元件有限公司生产的 WTB 2.0 阴型 & 阳型电子连接器，产品名称：TJC20085 系列连接器。

This product specification covers the requirement for wire to board 2.0mm pitch Receptacle & Plug connector, which are designed and manufactured by CWB Electronics(ZheJiang) Co.,LTD. P/N: TJC20085 Connector..

3.产品描述 Product description

TJC20085 系列产品为家电连接器产品，产品部件组成如下：

The TJC20085 series connector designed for home appliances connection. part checklist as following form:

零件名称 Part name	规格型号 Part No.	曾用规格型号 Previous part No.	描述 Description
插簧 Contact	CH-TJC20085-***	PHD	AWG#28~AWG#24
插簧 Contact	CH- TJC20085-1-***	PHD-1	AWG#22
条形连接器孔座（双排） Housing(Double row)	TJC20085-2×nY(**-*)	PHD-nY	PA66 UL94 V-0
阳连接器（立式，直插，双排） Header (V, DIP, Double row)	TJC20085-2×nA(**-*)	PHD-nA	Wafer: standards: PA66+GF V-2 Others: PA66 UL94 V-0 Post: Brass, tin plated
阳连接器（卧式，直插，带挡板，双排） Header (H, DIP, W/PCB stabilizer, Double row)	TJC20085-2×nAWJ(**-*)	PHD-nAWJ	Wafer: standards: PA66+GF V-2 Others: PA66 UL94 V-0 Post: Brass, tin plated
阳连接器（卧式，直插，带挡板，双排） Header (H, DIP, W/PCB stabilizer, Double row)	TJC20085-2×nAWJ1.2(**-*)	PHD-nAWJ-1.2	Wafer: standards: PA66+GF V-2 Others: PA66 UL94 V-0 Post: Brass, tin plated

4.相关标准 Related standards

以下参考文件是本规格书的一个组成部份。若本规格书中的要求与产品图纸发生冲突，以产品图中的要求为优先；若本规格书中的要求与参考文件中的要求冲突，以本规格书要求为优先。

The following documents form a part of this specification. In the event of conflict between the requirements of this specification and the product drawing, the product drawing shall take precedence. In the event of conflict between the requirements of this specification and the referenced documents, this specification shall take precedence.

- GB/T 2421 环境试验 概述和指南
Environmental testing —— General and guidance
- GB/T 2423 环境试验 试验方法
Environmental testing —— Test methods
- GB/T 2424 环境试验 支持文件及导则
Environmental testing —— Supporting documentation and guidance
- GB/T 5095 电子设备用机电元件基本试验规程及测量方法

产品名称 Product name	TJC20085 系列连接器	编号 Document No.	PS4118	版本号 Version No.	V1
----------------------	----------------	--------------------	--------	--------------------	----



产品规格书

PRODUCT SPECIFICATION

Electromrchanical components for electronic equipment Basic testing procedures and measuring methods

EIA-364 EIA-364 系列标准

EIA-364 series standards

IPC EIA IPC JEDEC J STD 002E 连接器 / 插座终端可焊性测试方法

产品符合 RoHS 标准。

The product should comply with RoHS.

5. 参数范围 Parameter ratings:

额定电流 [AC(有效值)/DC] Rated current [AC(rms)/DC]	AWG#28 1A Max.	AWG#26 1.5A Max.	AWG#24 2.5A Max.	AWG#22 3A Max.
适用 PCB 板 Applicable PCB	Board thickness:0.8mm~1.6mm Hole diameter: 0.7mm~0.8mm			
额定电压[AC(有效值)/DC] Rated voltage [AC(rms)/DC]	250V			
使用温度范围（包含温升） Operating temperature range (include temperature rise)	-40°C~+85°C			
适用线型（具体适用线型请参考压接规格书） Applicable wires(Please refer to the crimping specification for details)	CH-TJC20085: Wire size: AWG#28~AWG#24(0.08mm ² ~0.20 mm ²) Insulation diameter: 1.2mm~1.4mm CH-TJC20085-1: Wire size: AWG#22 (0.32 mm ²) Insulation diameter: 1.6mm			

产品名称 Product name	TJC20085 系列连接器	编号 Document No.	PS4118	版本号 Version No.	V1
----------------------	----------------	--------------------	--------	--------------------	----

6. 产品性能 Performance

6.1 机械性能 Mechanical

序号 No.	项目 Item	测试条件 Test condition	规格 Requirement
6.1.1	外观 Appearance	目测 Checking by eyes 视力: 1.0 以上 Eyesight: > 1.0 照明: (200~300) lx Lamp: (200~300) lx 目测距离: (0.3~0.5) m Space: (0.3~0.5) m GB/T 5095.2 Method 1a	1. 塑料件表面应无明显疤痕、凹陷、开裂及影响使用的变形。 Plastic part: smooth and flat surface without discolor, broken, crack, and distortion, etc. 2. 金属件表面无锈蚀、氧化、无明显的机械损伤及电镀层脱落等缺陷。 Metal part: bright and even surface without rust, oxide, fog and obvious physical damage, etc.
6.1.2	端子插入力与固定力 Insertion force and retention force for contact	应测量将端子沿轴线方向插入孔座和拔出孔座的力, 测试速度不大于25 mm/min。 The force of inserting and pulling the contact into and out of the housing along the axis shall be measured (Testing speed: <25 mm/min.) GB/T 5095.8 Method 15d / EIA-364-29B	插入力 (最大值): 10N 固定力 (最小值): 15N Insertion force (Max.): 10N Retention force (Min.): 15N
6.1.3	插簧与插针的插拔力 Insertion and withdrawal force for pin in the contact	固定连接器和/或测力计, 在端子轴线方向将插针插入和拔出插簧, 测试速度不大于 25 mm/min。 Insert the pin contact into and pull out the socket contact in the direction of the terminal axis (Testing speed: <25 mm/min.) GB/T 5095.7 Method 13b / EIA-364-13B	插入力: ≤5N 拔出力: ≥1N Insertion force: ≤5N Withdrawal force: ≥1N
6.1.4	针的固定力 Post retention force	沿插针轴线方向施加推力, 测量将插针从塑件上分离的力, 测试速度不大于 25 mm/min。 The end of a post shall be pushed in a direction perpendicular to a wafer. The load required to make the post start moving from the wafer shall be measured. (Testing speed: <25 mm/min.) GB/T 5095.8 Method 15a / EIA-364-29B	10N Min.
6.1.5	压着部位抗张强度 Crimp tensile strength	在已压接端子的头部和导线上施加拉力, 并测量将导线从端子拉出或导线断裂所需的力, 测试速度不大于 25 mm/min。 Pulling load shall be applied to a correctly crimped contact and a wire. The load required to pull the wire out of the contact or break the wire shall be measured. (Testing speed: <25 mm/min.) GB/T5095.8 Method 16d / EIA-364-08B	AWG#28: 10N Min. AWG#26: 20N Min. AWG#24: 30N Min. AWG#22: 40N Min.

产品名称 Product name	TJC20085 系列连接器	编号 Document No.	PS4118	版本号 Version No.	V1
----------------------	----------------	--------------------	--------	--------------------	----



产品规格书

PRODUCT SPECIFICATION

6.1.6	成品插入力与拔出力 Insertion force and withdrawal force	<p>将装有已压接端子的孔座与阳连接器做插入和拔出，测量首次插入力、首次拔出力及第30次拔出力，测试速度不大于25 mm/min。</p> <p>A housing with crimped contacts and a header shall be mated and unmated on the mating axis. Initial insertion and withdrawal forces and withdrawal force at 30th. shall be measured. (Testing speed: <25 mm/min.)</p> <p>GB/T 5095.7 Method 13b / EIA-364-13B</p>	No. of poles	插入力（最大值） Insertion (Max)	拔出力（最小值） Withdrawal (Min)	
				初次 1st	初次 1st	第三十次 30st
			10P	55N	15N	12N
			12P	60N	17N	14N
			14P	65N	19N	16N
			16P	70N	21N	18N
			18P	75N	23N	20N
			20P	80N	25N	22N
			22P	85N	27N	24N
			24P	90N	29N	26N
			26P	95N	31N	28N
			28P	100N	33N	30N
			30P	105N	35N	32N
			32P	110N	37N	34N
34P	115N	39N	36N			
6.1.7	机械振动 Vibration	<p>插合连接器，串联在直流电源上，电流100 mA；并模拟正常工作状态：振频为（10~55~10） Hz，每个循环时间为1分钟，振幅1.52 mm。沿XYZ三轴正反方向各循环2小时。</p> <p>Mate connectors subjected them to following vibration conditions, for a period of 2 hours in each of 3 mutually perpendicular axes, 100 mA current shall be applied.</p> <p>Frequency: (10~55~10) Hz/min.</p> <p>Cycling time: 1min.</p> <p>Amplitude: 1.52 mm.</p> <p>GB/T 5095.4 Method 6d / EIA-364-28D</p>	<p>外观：无损伤（参照6.1.1）</p> <p>Appearance: no damage.(refer to 6.1.1)</p> <p>接触电阻：20mΩ Max.</p> <p>Contact resistance: 20mΩ Max.</p> <p>电流中断时间：1μsec Max</p> <p>Current interruption: 1μsec Max</p>			
6.1.8	机械冲击 Shock	<p>连接器相配，沿XYZ三轴正反方向各冲击3次（总共18次），在测试过程中通以100 mA电流。</p> <p>冲击强度：490 m/s²</p> <p>持续时间：11 ms</p> <p>Mate connectors and subject them to the following shock conditions, 3 times of shock shall be applied for each 6 directions along 3 mutually perpendicular axes, passing DC 100mA current during the test.(total of 18 shocks)</p> <p>Test pulse: 490 m/s²</p> <p>Duration: 11 ms</p> <p>GB/T 5095.4 Method 6c / EIA-364-27B</p>	<p>外观：无损伤（参照6.1.1）</p> <p>Appearance: no damage.(refer to 6.1.1)</p> <p>电流中断时间：1μsec Max</p> <p>Current interruption: 1μsec Max</p>			
6.1.9	机械寿命 Durability	<p>以每分钟 10 次的速度插拔 50 次。</p> <p>50 cycles for mating and unmating test at the speed of 10 cycles per minute</p> <p>GB/T 5095.5 Method 9a / EIA-364-09C</p>	<p>外观：无损伤（参照6.1.1）</p> <p>Appearance: no damage.(refer to 6.1.1)</p> <p>接触电阻：20mΩ Max.</p> <p>Contact resistance: 20mΩ Max.</p>			

6.2 电气性能 Electrical

序号 No.	项目 Item	测试条件 Test condition	规格 Requirement
6.2.1	接触电阻 Contact resistance	<p>插配阴阳连接器后,用小功率电路进行测试。</p> <p>Mate connectors with dry circuit to test contact resistance</p> <p>GB/T 5095.2 Method 2a / EIA-364-23B</p>	<p>10mΩ Max. (Initial)</p> <p>20mΩ Max. (Final)</p>
6.2.2	绝缘电阻 Insulation resistance	<p>在相邻接触件之间或地线之间,用 500 V DC 电压进行测试。</p> <p>Apply a voltage of 500 V DC between adjacent contacts and between contacts to ground.</p> <p>GB/T 5095.2 Method 3a / EIA-364-21C</p>	<p>1000 MΩ Min. (Initial)</p> <p>500 MΩ Min. (Final)</p>

产品名称 Product name	TJC20085 系列连接器	编号 Document No.	PS4118	版本号 Version No.	V1
----------------------	----------------	--------------------	--------	--------------------	----



产品规格书

PRODUCT SPECIFICATION

6.2.3	耐电压 Withstand voltage	相邻接触件之间或地线之间施加 800 V AC (有效值),漏电流 1 mA 的电压作用,时间 1min。 Apply a voltage of 800 V AC (rms) and leakage current of 1 mA between adjacent contacts or ground cables for 1 minute. GB/T 5095.2 Method 4a / EIA-364-20B	外观: 无击穿和飞弧现象 Appearance: no breakdown or flashover
6.2.4	温升 Temperature rise	插合连接器, 通以最大允许电流, 测温度的差值。 Mate connectors and measure the temperature rise of contact when the maximum AC rated current is passed. GB/T 5095.3 Method 5a / EIA-364-70A	$\Delta 60^{\circ}\text{C}$ Max.

6.3 环境性能 Environmental

序号 No.	项目 Item	测试条件 Test condition	规格 Requirement										
6.3.1	耐高温 Heat resistance	连接器配合后, 于 $(105\pm 2)^{\circ}\text{C}$ 的空气中放置 240 小时, 再回到室温中放置 $(1\sim 2)$ 小时测定。 Mated connectors exposed to the condition of $(105\pm 2)^{\circ}\text{C}$ for 240 hours, recovery time $(1\sim 2)$ hours GB/T 5095.6 Method 11i / EIA-364-17B	外观: 无损伤 (参照6.1.1) Appearance: no damage.(refer to 6.1.1) 接触电阻: 20m Ω Max. Contact resistance: 20m Ω Max. 绝缘电阻: 500 M Ω Min. Insulation resistance:500 M Ω Min. 耐电压: 500V Min. Withstand voltage: 500V Min.										
6.3.2	耐低温 Cold resistance	连接器配合后, 于 $(-40\pm 2)^{\circ}\text{C}$ 的空气中放置 96 小时, 再回到室温中放置 $(1\sim 2)$ 小时测定。 Mated connectors exposed to the condition of $(-40\pm 2)^{\circ}\text{C}$ for 96hours, recovery time $(1\sim 2)$ hours GB/T 5095.6 Method 11j / EIA-364-17B	外观: 无损伤 (参照6.1.1) Appearance: no damage.(refer to 6.1.1) 接触电阻: 20m Ω Max. Contact resistance: 20m Ω Max. 绝缘电阻: 500 M Ω Min. Insulation resistance:500 M Ω Min. 耐电压: 500V Min. Withstand voltage: 500V Min.										
6.3.3	恒定湿热 Humidity	温度 $(40\pm 2)^{\circ}\text{C}$, 相对湿度 $(90\sim 95)\%$, 搁置时间 240 小时, 取出恢复 $(1\sim 2)$ 小时后检查。 Mated connectors exposed to the condition of temperature $(40\pm 2)^{\circ}\text{C}$, humidity $(90\sim 95)\%$ for 240 hours, recovery time $(1\sim 2)$ hours GB/T 5095.6 Method 11c / EIA-364-31B	外观: 无损伤 (参照6.1.1) Appearance: no damage.(refer to 6.1.1) 接触电阻: 20m Ω Max. Contact resistance: 20m Ω Max. 绝缘电阻: 500 M Ω Min. Insulation resistance: 500 M Ω Min. 耐电压: 500V Min. Withstand voltage: 500V Min.										
6.3.4	温度循环 Temperature cycling	把试验样品分别放入高、低温试验箱中, 按下列步骤调试温度: a) 在 $(-55\pm 2)^{\circ}\text{C}$ 的恒温条件下放置 0.5 小时; b) 在 $(85\pm 2)^{\circ}\text{C}$ 的恒温条件下放置 0.5 小时; 从 a)到 b)为一个循环, 周期温度转换时间应不大于 5 分钟, 共进行 25 个循环,恢复 $(1\sim 2)$ 小时后检查。 Mated connectors shall be tested under the following conditions <table style="margin-left: 20px; border-collapse: collapse;"> <thead> <tr> <th style="text-align: left;">Temperature $^{\circ}\text{C}$</th> <th style="text-align: left;">Duration</th> </tr> </thead> <tbody> <tr> <td>1 -55 ± 2</td> <td>0.5 h</td> </tr> <tr> <td>2 Room Temp.</td> <td>5 minutes Max.</td> </tr> <tr> <td>3 $+85\pm 2$</td> <td>0.5 h</td> </tr> <tr> <td>4 Room Temp.</td> <td>5 minutes Max.</td> </tr> </tbody> </table> Step 1 to 4 is one cycle,25 cycles shall be tested, recovery time $(1\sim 2)$ hours GB/T 5095.6 method 11d / EIA-364-32C	Temperature $^{\circ}\text{C}$	Duration	1 -55 ± 2	0.5 h	2 Room Temp.	5 minutes Max.	3 $+85\pm 2$	0.5 h	4 Room Temp.	5 minutes Max.	外观: 无损伤 (参照6.1.1) Appearance: no damage.(refer to 6.1.1) 接触电阻: 20m Ω Max. Contact resistance: 20m Ω Max. 绝缘电阻: 500 M Ω Min. Insulation resistance: 500 M Ω Min. 耐电压: 500V Min. Withstand voltage: 500V Min.
Temperature $^{\circ}\text{C}$	Duration												
1 -55 ± 2	0.5 h												
2 Room Temp.	5 minutes Max.												
3 $+85\pm 2$	0.5 h												
4 Room Temp.	5 minutes Max.												

产品名称 Product name	TJC20085 系列连接器	编号 Document No.	PS4118	版本号 Version No.	V1
----------------------	----------------	--------------------	--------	--------------------	----

6.3.5	盐雾 Salt spray	<p>把试验样品从试验箱顶悬挂下来,采用浓度为(5±1)%(质量百分比)的氯化钠溶液,在(35±2)℃温度下连续雾化48小时,试验后用流动的蒸馏水轻轻洗去表面沉积物。在常温常湿条件下恢复(1~2)小时。</p> <p>48 hours spray, at temp (35±2) °C, NaCl mist concentration (5±1) %. After test wash parts and put it into room ambient for (1~2) hours</p> <p>GB/T 5095.6 Method 11f / EIA-364-26B</p>	<p>外观: 无损伤(五金件应无露出底金属的严重锈蚀,使用预镀好的型材,其落料面允许有不影响其性能的轻微腐蚀。)</p> <p>Appearance: no damage (no erosion on material exposed, and plating material, slight erosion on the cutting surface is acceptable)</p> <p>接触电阻: 20mΩ Max. Contact resistance: 20mΩ Max.</p>
6.3.6	可焊性 Solderability	<p>把试验样品需要焊接的部位浸入焊锡炉中,锡炉温度(245±5)℃,时间(4~5)秒。</p> <p>Dip solder tails into the molten solder held at (245±5) °C for (4~5) seconds</p> <p>IPC EIA IPC JEDEC J STD 002E</p>	<p>上锡率≥90%: Solder coverage: ≥90%</p>
6.3.7	耐焊接热 Resistance to soldering heat	<p>1.耐波峰焊热: 把试验样品需要焊接的部位浸入焊锡炉中,锡炉温度(260±5)℃;时间(5±1)秒后,在正常条件下恢复(1~2)小时。(温度曲线见图1)</p> <p>2.手工焊接: 温度(350±10)℃,时间(1~2)seconds。</p> <p>1.Resistance to wave soldering heat: Dip solder tails into the molten solder held at (260±5) °C for (5 ±1) seconds, recovery time (1~2) hours. (The temperature curve is shown in Figure 1)</p> <p>2.Manual soldering: (350 ±10) °C for (1~2) seconds</p>	<p>外观: 无损伤(参照6.1.1)</p> <p>Appearance: no damage.(refer to 6.1.1)</p>

产品名称 Product name	TJC20085 系列连接器	编号 Document No.	PS4118	版本号 Version No.	V1
----------------------	----------------	--------------------	--------	--------------------	----



产品规格书

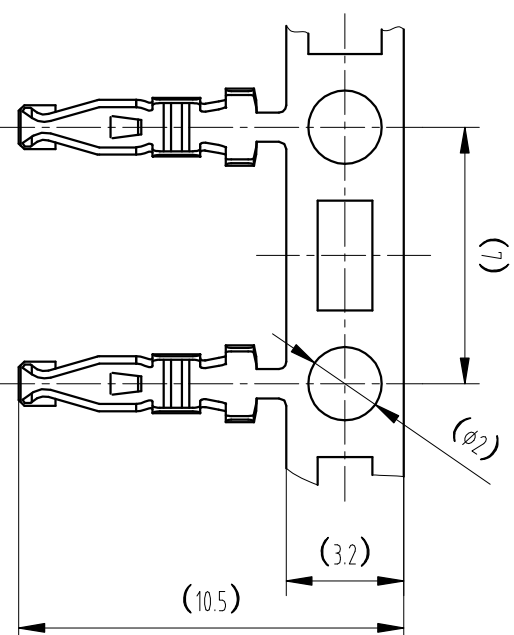
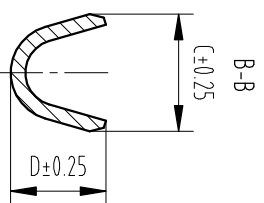
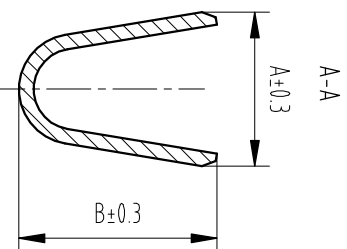
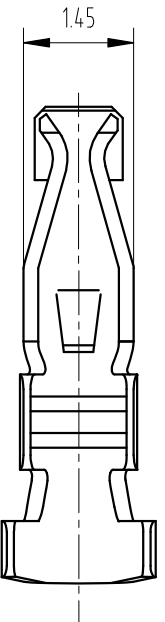
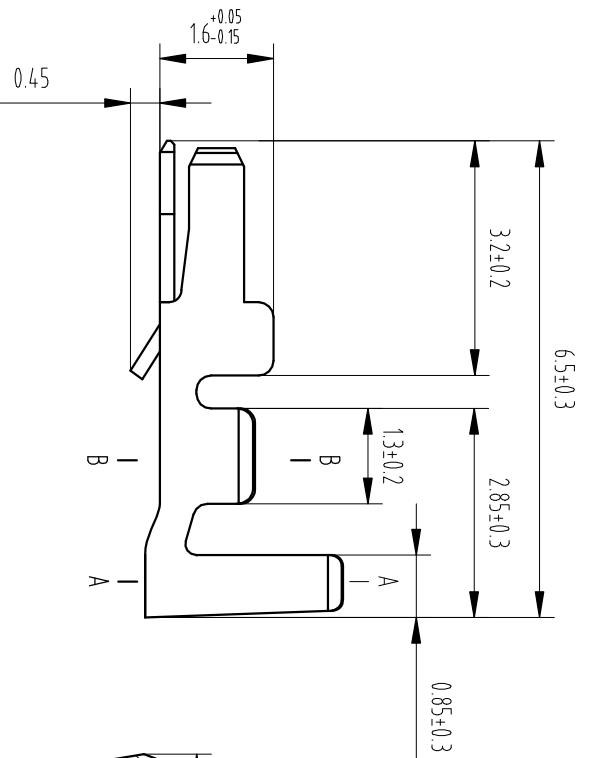
PRODUCT SPECIFICATION

7.测试分组 Test sequences (Samples:5PCS)

测试组 Group number	A	B	C	D	E	F	G	H	I	J	K	L	M	N	O	P
外观 Appearance	1	1	1	1	1	1,5	1,3	1,7	1	1,7	1,5	1,7	1,7	1,5	1,3	1,3
端子的插入力与固定力 Insertion force and retention force for contact	2															
端子的插拔力 Insertion and withdrawal force for contact		2														
针的固定力 Post retention force			2													
压着部位抗张强度 Crimp tensile strength				2												
成品插入力与拔出力 Insertion force and withdrawal force					2											
机械振动 Vibration						3										
机械冲击 Shock							2									
机械寿命 Durability								5								
接触电阻 Contact resistance						2,4		2,6		2,4	2,4	2,4	2,4	2,4		
绝缘电阻 Insulation resistance								3		6		5	5			
耐电压 Withstand voltage								4		5		6	6			
温升 Temperature rise									2							
耐高温 Heat resistance										3						
耐低温 Cold resistance											3					
恒定湿热 Humidity												3				
温度循环 Temperature cycling													3			
盐雾 Salt spray														3		
可焊性 Solderability																2
耐焊接热 Resistance to soldering heat																2

产品名称 Product name	TJC20085 系列连接器	编号 Document No.	PS4118	版本号 Version No.	V1
----------------------	----------------	--------------------	--------	--------------------	----

General tolerance		Dimension	Tolerance	Rev. No.	Location	Description	Reviser	Date
0~3	±0.13							
3~18	+0.23							
18~50	+0.35							
≥50	+0.55							



Notes:

- 1.Material: Phosphor bronze, thickness=0.2mm
- 2.Surface finish: tin plated
- 3.Matched housing: TJC20085-2XnY
- 4.Applicable wires:
CH-TJC20085-AWG28#~AWG24#
CH-TJC20085-1AWG22#
- 5.Compliant to the current RoHS

CUSTOMER DRAWING

Drawn	Nanhao Wang	2022.3.12	Unit	Scale	Size	Edition	Part No.	Previous part No.	Title:	
Checked	Qu Wang	2022.3.12	mm	10:1	A4	B2	CH-TJC20085-1	PHD-1	2mm pitch WTB contact	
Approved	Dongxuliu	2022.3.12	Sheet No.	1 of 1			CH-TJC20085	PHD		
							Part No.	Previous part No.	Dimension	
							A	B	C	D

CWB 浙江合兴电子元件有限公司
CWB Electronic Components (Zhejiang) Co., Ltd.

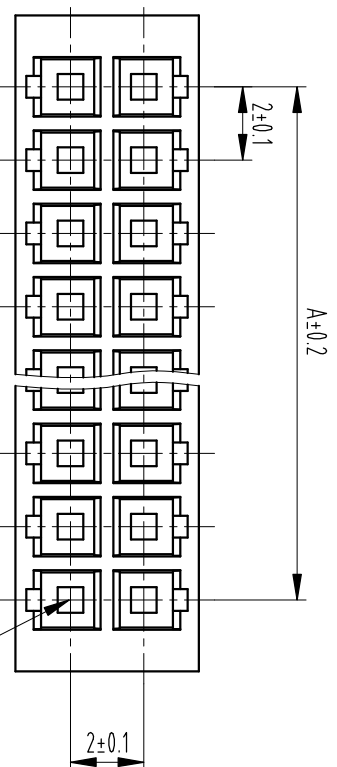
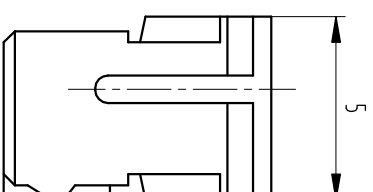
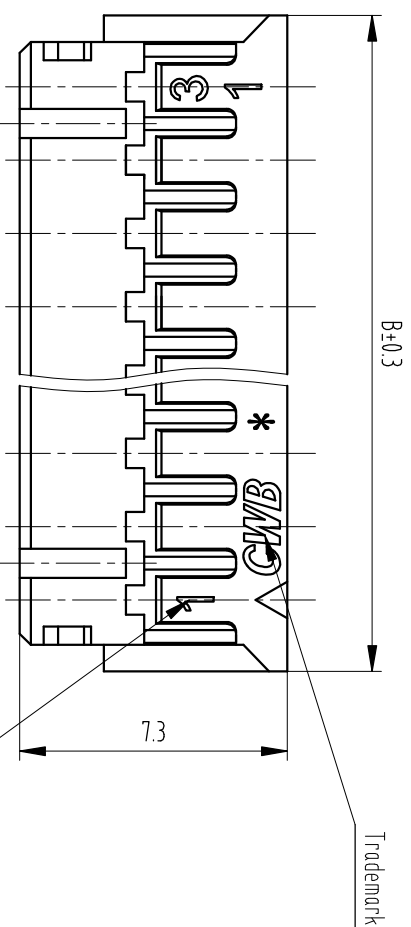
Part No.: CH-TJC20085-*/CH-TJC20085-1-*

Previous part No.: PHD / PHD-1

Document No.: CP-DWG-01243

Specification No.: PS4178

General tolerance		Dimension	Tolerance	Rev. No.	Location	Description	Reviser	Date
	0~3		±0.13					
	3~18		+0.23					
	18~50		+0.35					
	≥50		+0.55					



32	TJC20085-2X16Y	PHD-32Y	30	33.9
30	TJC20085-2X15Y	PHD-30Y	28	31.9
28	TJC20085-2X14Y	PHD-28Y	26	29.9
26	TJC20085-2X13Y	PHD-26Y	24	27.9
24	TJC20085-2X12Y	PHD-24Y	22	25.9
22	TJC20085-2X11Y	PHD-22Y	20	23.9
20	TJC20085-2X10Y	PHD-20Y	18	21.9
18	TJC20085-2X9Y	PHD-18Y	16	19.9
16	TJC20085-2X8Y	PHD-16Y	14	17.9
14	TJC20085-2X7Y	PHD-14Y	12	15.9
12	TJC20085-2X6Y	PHD-12Y	10	13.9
10	TJC20085-2X5Y	PHD-10Y	8	11.9
Kts	Part No.	Previous part No	Dimensions	
			A	B

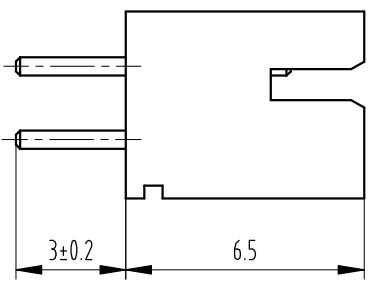
Notes:

1. Material: PA66 UL94, V-0
2. Matched header: TJC20085-2XnA, TJC20085-2XnAWJ, TJC20085-2XnAWJ1.2
3. Matched contact: CH-TJC20085, CH-TJC20085-1
4. Packaging: packing bag
5. Compliant to the current RoHS

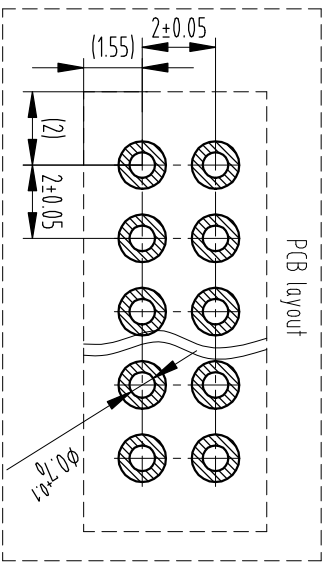
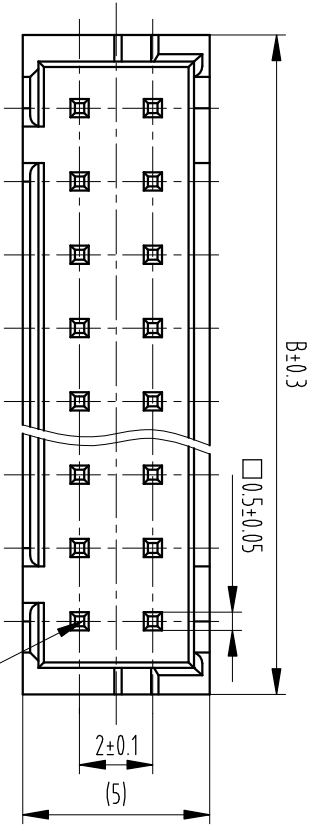
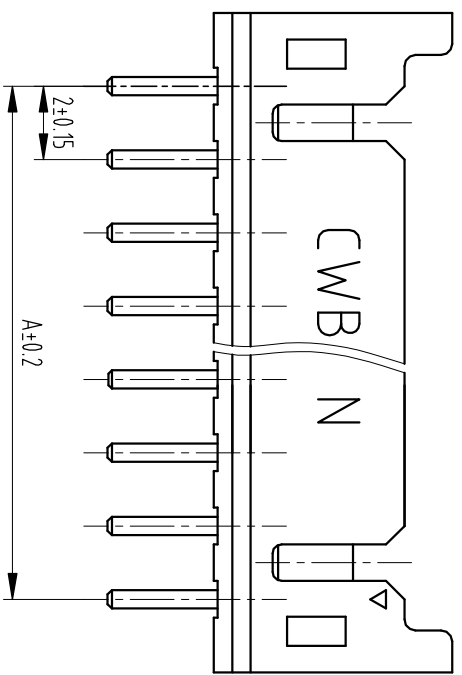
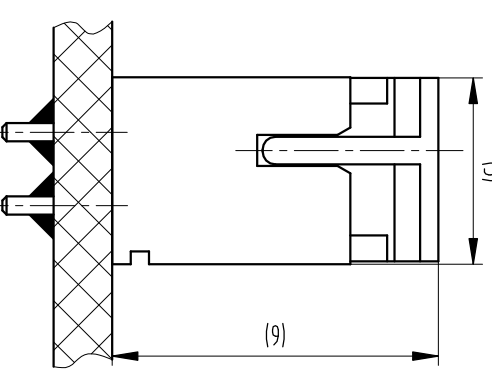
CUSTOMER DRAWING

Title: 2.0mm pitch WTB housing					
Drawn	Naihua Wang	2022.3.12	Unit	Scale	Size
Checked	Qu Wang	2022.3.12	mm	5:1	A4
Approved	Dongxuliu	2022.3.12	Sheet No.	1 of 1	B2
			 浙江合兴电子有限公司 Zhejiang Hexiong Electronics Co., Ltd.		
			Part No.: TJC20085-2XnY(k*-*) Previous part No.: PHD-nY Document No.: CP-DWG-01244 Specification No.: PS418		

Dimension	Tolerance	Rev. No	Location	Description	Reviser	Date
0~3	±0.13					
3~18	+0.23					
18~50	+0.35					
≥50	+0.55					



Assembly view
(DIM F.YI)



Notes:
1.Material
Wafer:

Standards: PA66+GF V-2

Others: PA66, UL94 V-0 GW1750°C

Post: Brass, tin plated

2.Matched housing: TJC20085-2XnY

3.Packaging: Tray

4.Compliant to the current RoHS

32	TJC20085-2X16A	PHD-32A	30	34
30	TJC20085-2X15A	PHD-30A	28	32
28	TJC20085-2X14A	PHD-28A	26	30
26	TJC20085-2X13A	PHD-26A	24	28
24	TJC20085-2X12A	PHD-24A	22	26
22	TJC20085-2X11A	PHD-22A	20	24
20	TJC20085-2X10A	PHD-20A	18	22
18	TJC20085-2X9A	PHD-18A	16	20
16	TJC20085-2X8A	PHD-16A	14	18
14	TJC20085-2X7A	PHD-14A	12	16
12	TJC20085-2X6A	PHD-12A	10	14
10	TJC20085-2X5A	PHD-10A	8	12
	Part No.	Previous part No.	A	B
	Ckts	Dimensions		

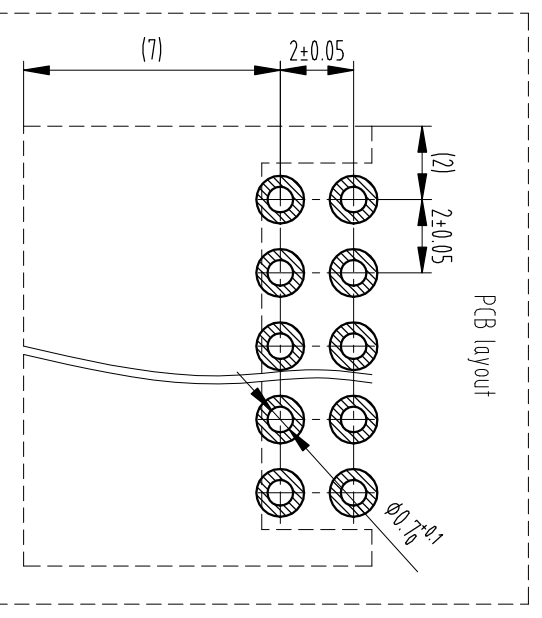
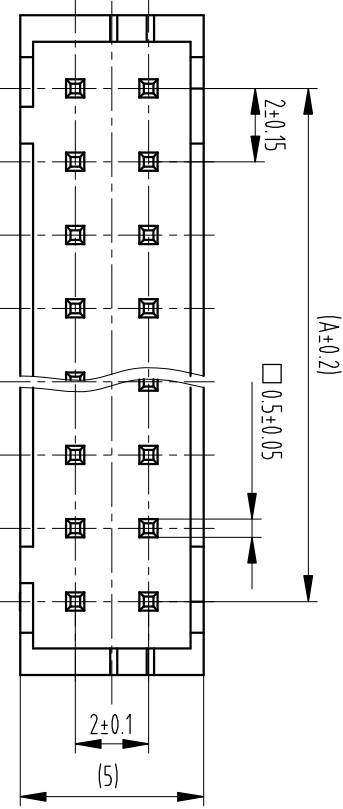
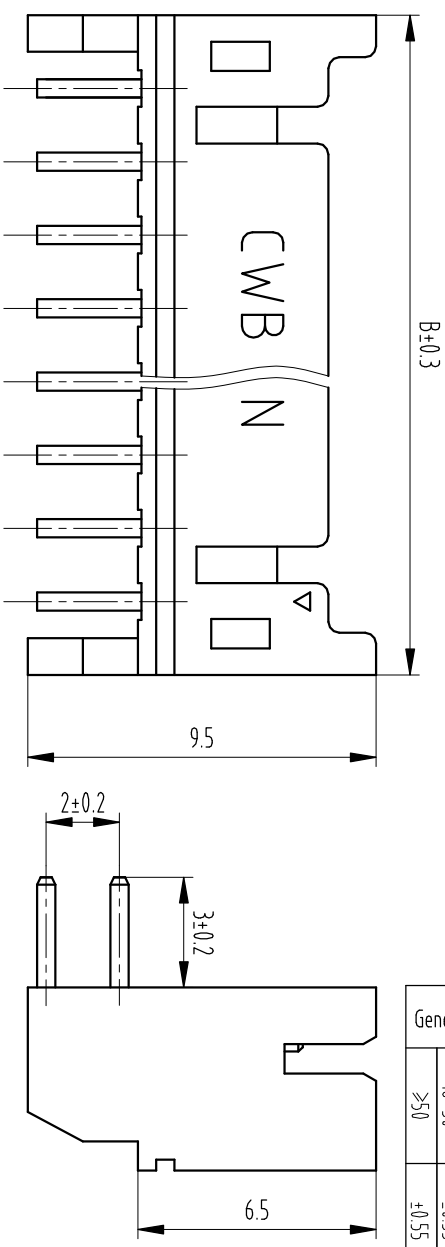
CUSTOMER DRAWING

Title:
2.0mm pitch WTB header

Drawn	Naihao Wang	2022.3.12	Unit	mm	Scale	5:1	Size	A4	Edition	B2	Part No.:	TJC20085-2XnA *(*-*-* *)
Checked	Qu Wang	2022.3.12	Sheet No.	1 of 1							Previous part No.:	PHD-nA
Approved	Dongxuliu	2022.3.12									Document No.:	CP-DWG-01245
											Specification No.:	PS4118

CWB 浙江合兴电子元件有限公司
CWB Electronics (Zhejiang) Co., Ltd.

Dimension	Tolerance	Rev. No	Location	Description	Reviser	Date
0~3	±0.13					
3~18	+0.23					
18~50	+0.35					
≥50	+0.55					



Notes:

1. Material
Wafer:

Standards: PA66+GF V-2
Others: PA66, UL94 V-0 GW/T750°C

Post: Brass, tin plated

2. Matched housing: TJC20085-2XN γ

3. Packaging: tray

4. Compliant to the current RoHS

CUSTOMER DRAWING

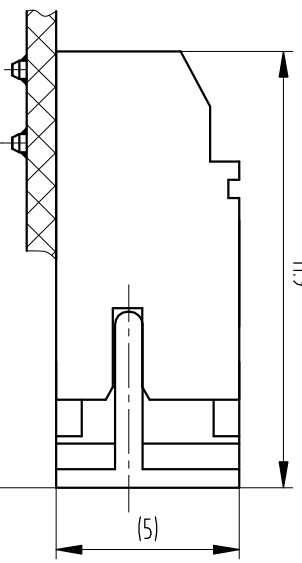
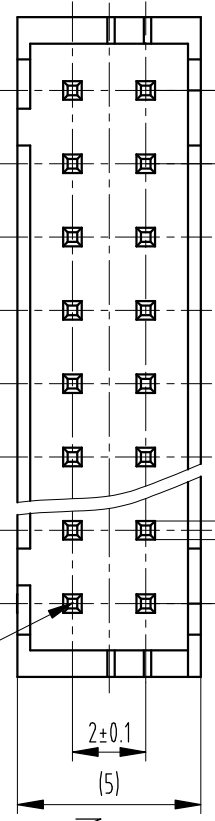
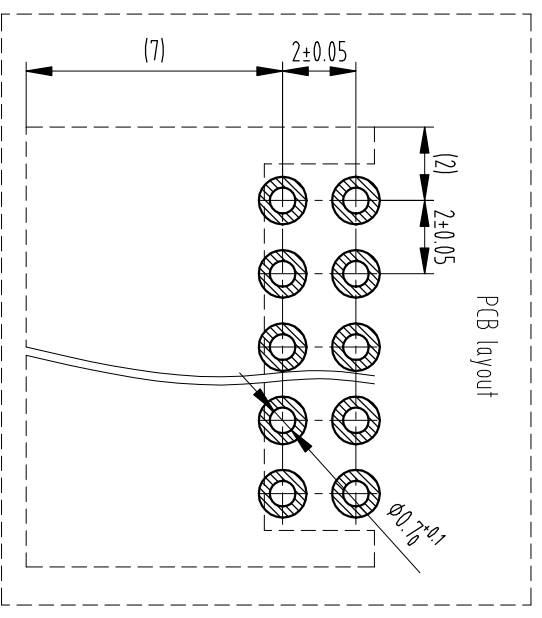
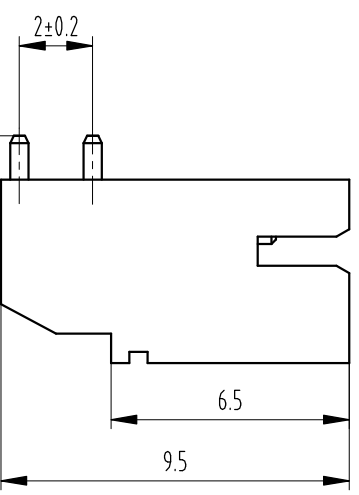
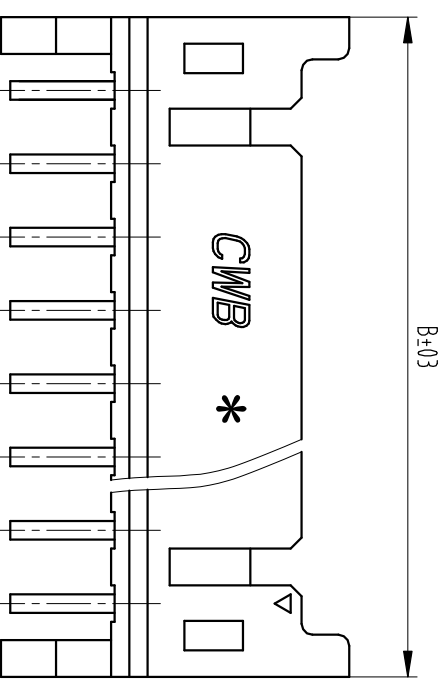
Title:
2.0mm pitch WTB header

Drawn	Naihao Wang	2022.3.12	Unit	mm	Scale	5:1	Size	A4	Edition	B2	Part No.:	TJC20085-2X(AWJ) *k*k-x)
Checked	Qiu Wang	2022.3.12	Sheet No.	1 of 1		Previous part No.:		PHD-nAWJ		Document No.:	CP-DWG-01246	
Approved	Dongxuliu	2022.3.12	CWB		浙江合兴电子有限公司		Specification No.:		PS4118			

A 1 2 3 4 5 6 7 8 9 10

H G F E D C B A

General tolerance		Dimension	Tolerance	Rev. No	Location	Description	Reviser	Date
0~3	±0.13							
3~18	+0.23							
18~50	+0.35							
≥50	+0.55							



- Notes:
1. Material
 - Water:
 - Standards: PA66+GF V-2
 - Others: PA66, UL94 V-0 GWT750°C
 - Post: Brass, tin plated
 2. Matched housing: TJC20085-2XnY
 3. Packaging: tray
 4. Compliant to the current RoHS

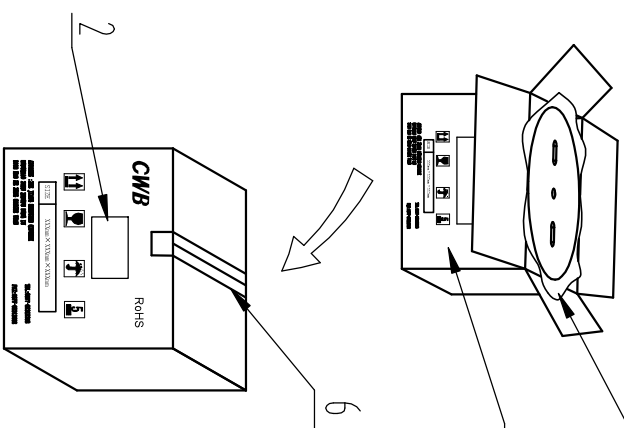
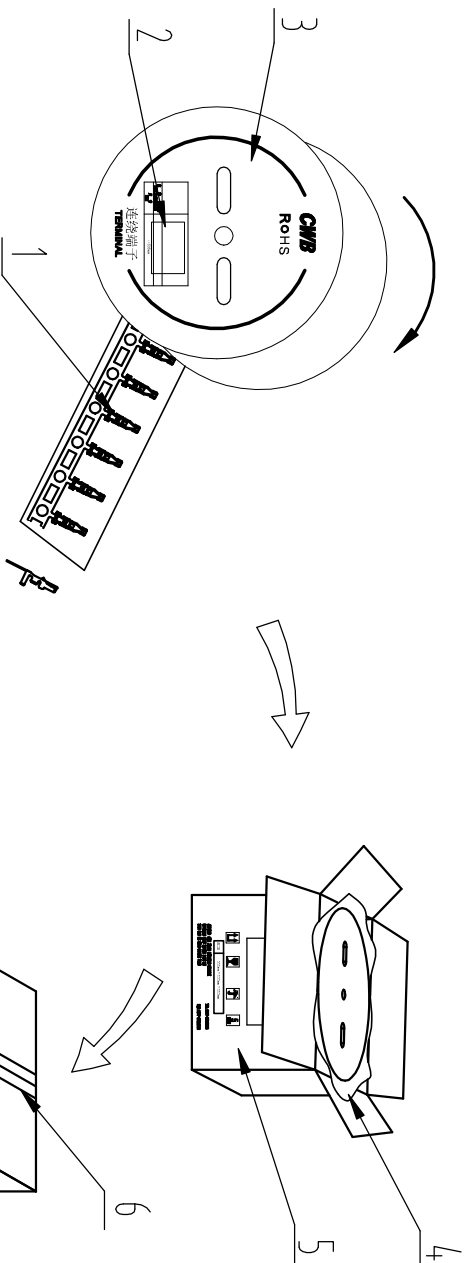
Part No.	Previous part No.	Dimensions
34	TJC20085-2X17AWJ12	32 36
32	TJC20085-2X16AWJ12	30 34
30	TJC20085-2X15AWJ12	28 32
28	TJC20085-2X14AWJ12	26 30
26	TJC20085-2X13AWJ12	24 28
24	TJC20085-2X12AWJ12	22 26
22	TJC20085-2X11AWJ12	20 24
20	TJC20085-2X10AWJ12	18 22
18	TJC20085-2X9AWJ12	16 20
16	TJC20085-2X8AWJ12	14 18
14	TJC20085-2X7AWJ12	12 16
12	TJC20085-2X6AWJ12	10 14
10	TJC20085-2X5AWJ12	8 12

CUSTOMER DRAWING

Drawn	Naihao Wang	2022.3.12	Unit	mm	Scale	5:1	Size	A4	Edition	B2	Part No.:	TJC20085-2XnAWJ12 *k*k-*k
Checked	Qiu Wang	2022.3.12	Sheet No.	1 of 1		Document No.:		CP-DWG-01247	Specification No.:		PS4118	
Approved	Dongxuliu	2022.3.12	Title: 2.0mm pitch WTB contact									



Dimension	Tolerance	Rev. No	Location	Description	Reviser	Date
0~3	±0.13					
3~18	+0.23					
18~50	+0.35					
≥50	+0.55					



Number	Designation	Remarks
6	gummed tape	
5	Packing box	
4	Packing bag	
3	Reel	
2	Certificate	
1	CH-1JC20085-1/ PHD-1	8kpcs/reel
	CH-1JC20085/PHD	8kpcs/reel

CUSTOMER DRAWING

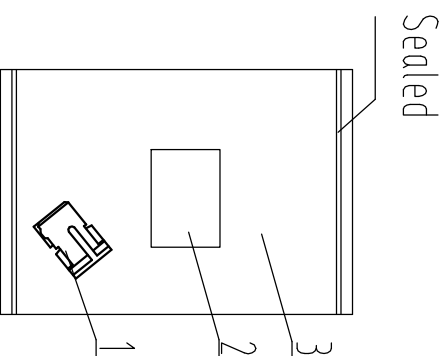
Title: Packaging specification

Drawn	Naihao.Wang	2022.3.12	Unit	mm	Scale	/	Size	A4	Edition	B2	Part No:CH-1JC20085-*/CH-1JC20085-1-**
Checked	Qu.Wang	2022.3.12	Sheet No.	1 of 1	Previous part No:	PHD /PHD-1	Document No.:	BZ-DWG-00695			
Approved	Dongxuliu	2022.3.12	Specification No.: PS4.118								

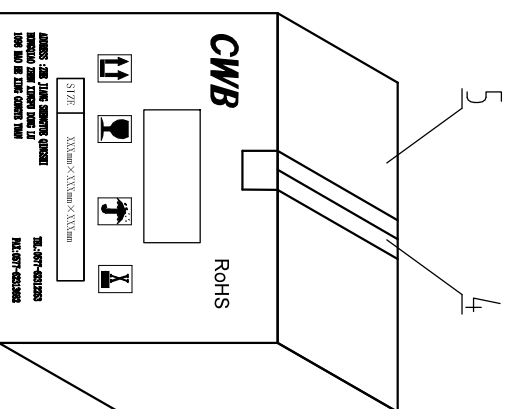
CWB 浙江合兴电子有限公司
CWB Electronics (Zhejiang) Co., Ltd

Dimension	Tolerance	Rev. No	Location	Description	Reviser	Date
0~3	±0.13					
3~18	+0.23					
18~50	+0.35					
≥50	+0.55					

Packing bag



Packing box

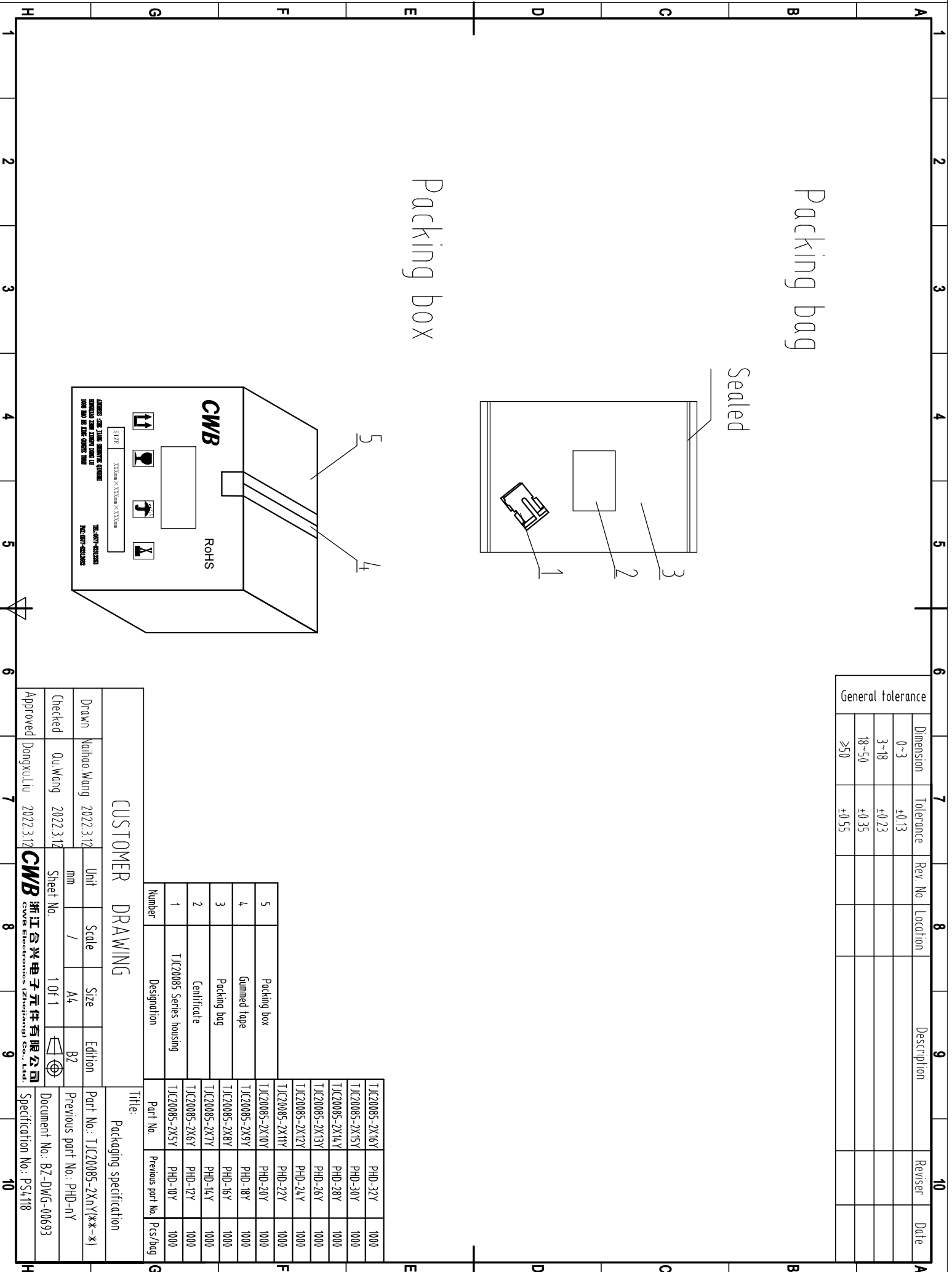


5	Packing box	TJC20085-2X16Y	PHD-32Y	1000
4	Gummed rope	TJC20085-2X15Y	PHD-30Y	1000
3	Packing bag	TJC20085-2X14Y	PHD-28Y	1000
2	Certificate	TJC20085-2X13Y	PHD-26Y	1000
1	TJC20085 Series housing	TJC20085-2X12Y	PHD-24Y	1000
		TJC20085-2X11Y	PHD-22Y	1000
		TJC20085-2X10Y	PHD-20Y	1000
		TJC20085-2X9Y	PHD-18Y	1000
		TJC20085-2X8Y	PHD-16Y	1000
		TJC20085-2X7Y	PHD-14Y	1000
		TJC20085-2X6Y	PHD-12Y	1000
		TJC20085-2X5Y	PHD-10Y	1000

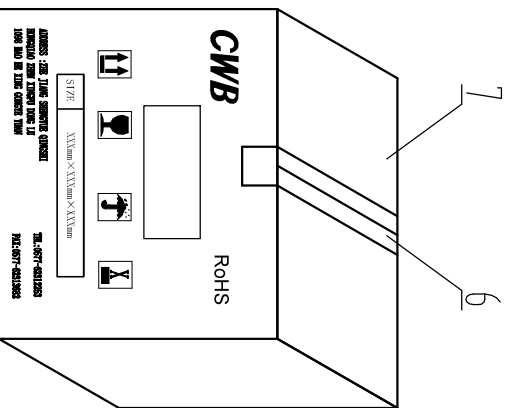
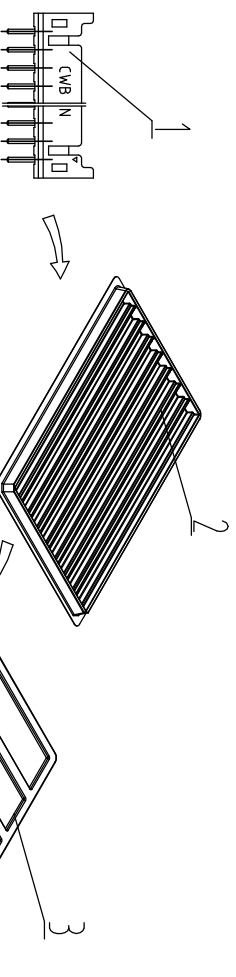
CUSTOMER DRAWING

Drawn	Nahao Wang	2022.3.12	Unit	mm	Scale	/	Size	A4	Edition	B2	
Checked	Qu Wang	2022.3.12	Sheet No.	1 of 1	Part No.: TJC20085-2XnY(k-k-x) Previous part No.: PHD-nY Document No.: BZ-DWG-00693 Specification No.: PS418						
Approved	Dongxuliu	2022.3.12	CWB 浙江合兴电子元件有限公司 Cwb Electronics (Zhejiang) Co., Ltd.								

Title: Packaging specification



General tolerance		Dimension	Tolerance	Rev. No	Location	Description	Reviser	Date
	0~3	±0.13						
	3~18	+0.23						
	18~50	+0.35						
	≥50	+0.55						



Number	Designation	Part No.	Previous part No.	Pcs/case	Part No.	Previous part No.	Pcs/case
1	TJC20085 series header	TJC20085-2X5A	PHD-10A	420	TJC20085-2X5AWJ	PHD-10AWJ	336
2	Tray	TJC20085-2X6A	PHD-12A	360	TJC20085-2X6AWJ	PHD-12AWJ	288
3	Cap	TJC20085-2X7A	PHD-14A	300	TJC20085-2X7AWJ	PHD-14AWJ	240
4	Centrifuge	TJC20085-2X9A	PHD-16A	280	TJC20085-2X8AWJ	PHD-16AWJ	224
5	Packing bag	TJC20085-2X10A	PHD-20A	220	TJC20085-2X10AWJ	PHD-20AWJ	176
6	Gummy tape	TJC20085-2X11A	PHD-22A	200	TJC20085-2X11AWJ	PHD-22AWJ	160
7	Packing box	TJC20085-2X12A	PHD-24A	180	TJC20085-2X12AWJ	PHD-24AWJ	144
		TJC20085-2X13A	PHD-26A	180	TJC20085-2X13AWJ	PHD-26AWJ	144
		TJC20085-2X14A	PHD-28A	160	TJC20085-2X14AWJ	PHD-28AWJ	128
		TJC20085-2X15A	PHD-30A	140	TJC20085-2X15AWJ	PHD-30AWJ	112
		TJC20085-2X16A	PHD-32A	140	TJC20085-2X16AWJ	PHD-32AWJ	112
		TJC20085-2X17AWJ12	PHD-32AWJ-12	112	TJC20085-2X17AWJ12	PHD-32AWJ-12	112
		TJC20085-2X18AWJ12	PHD-30AWJ-12	112	TJC20085-2X18AWJ12	PHD-30AWJ-12	112
		TJC20085-2X19AWJ12	PHD-28AWJ-12	128	TJC20085-2X19AWJ12	PHD-28AWJ-12	128
		TJC20085-2X20AWJ12	PHD-26AWJ-12	144	TJC20085-2X20AWJ12	PHD-26AWJ-12	144
		TJC20085-2X21AWJ12	PHD-24AWJ-12	144	TJC20085-2X21AWJ12	PHD-24AWJ-12	144
		TJC20085-2X22AWJ12	PHD-22AWJ-12	160	TJC20085-2X22AWJ12	PHD-22AWJ-12	160
		TJC20085-2X23AWJ12	PHD-20AWJ-12	176	TJC20085-2X23AWJ12	PHD-20AWJ-12	176
		TJC20085-2X24AWJ12	PHD-18AWJ-12	192	TJC20085-2X24AWJ12	PHD-18AWJ-12	192
		TJC20085-2X25AWJ12	PHD-16AWJ-12	224	TJC20085-2X25AWJ12	PHD-16AWJ-12	224
		TJC20085-2X26AWJ12	PHD-14AWJ-12	240	TJC20085-2X26AWJ12	PHD-14AWJ-12	240
		TJC20085-2X27AWJ12	PHD-12AWJ-12	288	TJC20085-2X27AWJ12	PHD-12AWJ-12	288
		TJC20085-2X28AWJ12	PHD-10AWJ-12	336	TJC20085-2X28AWJ12	PHD-10AWJ-12	336
		TJC20085-2X29AWJ12	PHD-10AWJ-12	336	TJC20085-2X29AWJ12	PHD-10AWJ-12	336
		TJC20085-2X30AWJ12	PHD-10AWJ-12	336	TJC20085-2X30AWJ12	PHD-10AWJ-12	336
		TJC20085-2X31AWJ12	PHD-10AWJ-12	336	TJC20085-2X31AWJ12	PHD-10AWJ-12	336
		TJC20085-2X32AWJ12	PHD-10AWJ-12	336	TJC20085-2X32AWJ12	PHD-10AWJ-12	336
		TJC20085-2X33AWJ12	PHD-10AWJ-12	336	TJC20085-2X33AWJ12	PHD-10AWJ-12	336
		TJC20085-2X34AWJ12	PHD-10AWJ-12	336	TJC20085-2X34AWJ12	PHD-10AWJ-12	336
		TJC20085-2X35AWJ12	PHD-10AWJ-12	336	TJC20085-2X35AWJ12	PHD-10AWJ-12	336
		TJC20085-2X36AWJ12	PHD-10AWJ-12	336	TJC20085-2X36AWJ12	PHD-10AWJ-12	336
		TJC20085-2X37AWJ12	PHD-10AWJ-12	336	TJC20085-2X37AWJ12	PHD-10AWJ-12	336
		TJC20085-2X38AWJ12	PHD-10AWJ-12	336	TJC20085-2X38AWJ12	PHD-10AWJ-12	336
		TJC20085-2X39AWJ12	PHD-10AWJ-12	336	TJC20085-2X39AWJ12	PHD-10AWJ-12	336
		TJC20085-2X40AWJ12	PHD-10AWJ-12	336	TJC20085-2X40AWJ12	PHD-10AWJ-12	336
		TJC20085-2X41AWJ12	PHD-10AWJ-12	336	TJC20085-2X41AWJ12	PHD-10AWJ-12	336
		TJC20085-2X42AWJ12	PHD-10AWJ-12	336	TJC20085-2X42AWJ12	PHD-10AWJ-12	336
		TJC20085-2X43AWJ12	PHD-10AWJ-12	336	TJC20085-2X43AWJ12	PHD-10AWJ-12	336
		TJC20085-2X44AWJ12	PHD-10AWJ-12	336	TJC20085-2X44AWJ12	PHD-10AWJ-12	336
		TJC20085-2X45AWJ12	PHD-10AWJ-12	336	TJC20085-2X45AWJ12	PHD-10AWJ-12	336
		TJC20085-2X46AWJ12	PHD-10AWJ-12	336	TJC20085-2X46AWJ12	PHD-10AWJ-12	336
		TJC20085-2X47AWJ12	PHD-10AWJ-12	336	TJC20085-2X47AWJ12	PHD-10AWJ-12	336
		TJC20085-2X48AWJ12	PHD-10AWJ-12	336	TJC20085-2X48AWJ12	PHD-10AWJ-12	336
		TJC20085-2X49AWJ12	PHD-10AWJ-12	336	TJC20085-2X49AWJ12	PHD-10AWJ-12	336
		TJC20085-2X50AWJ12	PHD-10AWJ-12	336	TJC20085-2X50AWJ12	PHD-10AWJ-12	336

CUSTOMER DRAWING

Title: Packaging specification

Drawn	Naihao Wang	2022.3.12	Unit	mm	Scale	/	Size	A4	Edition	B3	Part No.:	TJC20085 series header
Checked	QuWang	2022.3.12	Sheet No.	1 of 1	Previous part No.:	/	Document No.:	BZ-DWG-00694	Specification No.:	PS4118		
Approved	Dongxuliu	2022.3.12	浙江合兴电子元件有限公司 CWB Electronics (Zhejiang) Co., Ltd.									

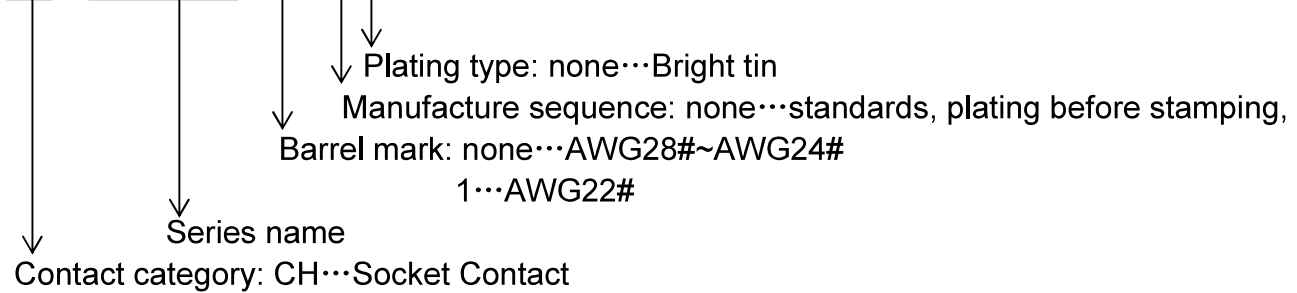
TJC20085 系列命名规则

TJC20085 series naming convention

1. Contact

CH-TJC20085-**-**

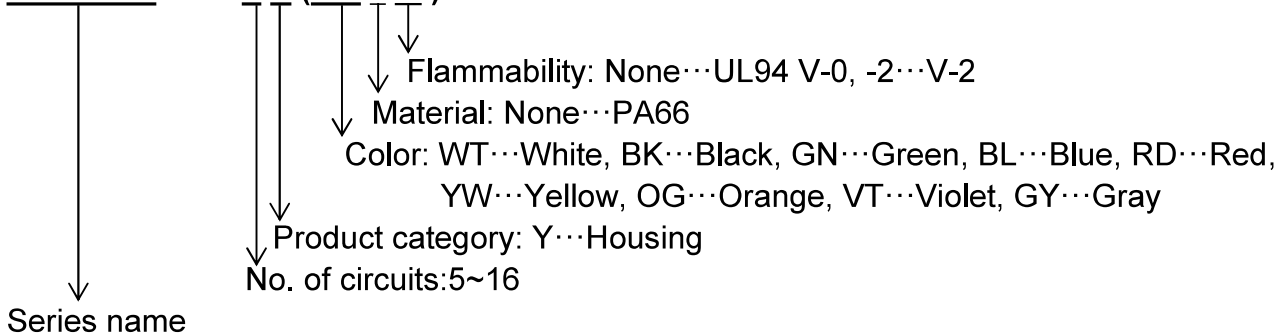
CH - TJC20085 - * - * *



2. Housing

TJC20085-nY (**-*)

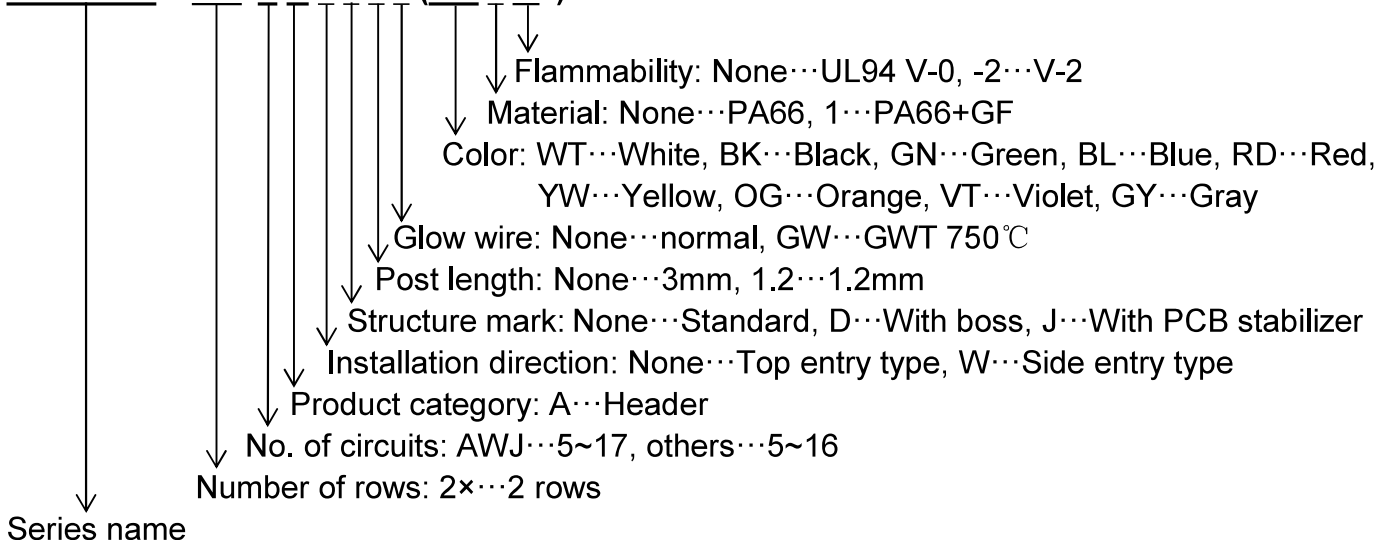
TJC20085 - 2 × n Y (WT * -*)



3. Header

TJC20085-2 × nA (**-*), TJC20085-2 × nAWJ (**-*), TJC20085-2 × nAWJ1.2 (**-*)

TJC20085 - 2 × n A * * * * (WT * -*)



4. Header which missing circuits

TJC20085-2×nAmZ(a.b...)(**-*), TJC20085-2×nAWJmZ(a.b...)(**-*),
 TJC20085-2×nAWJmZ(a.b...)1.2(**-*)

...n A ... mZ (a.b...)

Missing circuit number: "a.b..." ...The positive integer represents the position of the missing circuits

No. of actual circuits: mZ ("m" is positive integer)

Product category: A...Header

No. of circuits: AWJ...5~17, others...5~16

Part No.	Circuit No.														
	○:with post; ×:without post														
	1	2	3	4	5	6	7	8	9	10	11	12	13	14	15
...13A ... 7Z(2.3.5.7.9.11)...	○	×	×	○	×	○	×	○	×	○	×	○	○		
...4A ... 3Z(2)...	○	×	○	○											
.....														