

标题: TJC25066 系列连接器

Title: TJC25066 Connector

目录

Index

1. 更改履历 Change record
2. 范围 Scope
3. 产品描述 Product description
4. 相关标准 Related standards
5. 参数范围 Parameter ratings
6. 产品性能 Performance
7. 测试分组 Test sequences

CWB 浙江合兴电子元件有限公司 CWB Electronics (Zhejiang) Co., Ltd.	<u>制定 Edit:</u> <u>路欢 2022.2.24</u>	<u>产品名称 Product name:</u> <u>TJC25066 系列</u>
中国·浙江省乐清市虹桥镇幸福东路 1098 号 合兴工业园 1098, Xingfu `Road(East), CWB Industrial Zone, Hongqiao, Yueqing, Zhejiang 325608, China Tel: 86-577-61313157 (Technology Dept) Tel: 86-577-62312253 (Sales Dept)	<u>审核 Check:</u> <u>王国英 2022.2.25</u>	<u>编号 Document No.:</u> <u>PS4159</u>
	<u>批准 Approval:</u> <u>刘冬旭 2022.2.25</u>	<u>版本 Revision:</u> <u>0</u>

1.更改履历 Change record

版本号 Version No.	更改前描述 Description before modification	更改后描述 Description after modification	更改人/日期 Reviser/Date
0	/	First release	路欢 2022/2/24

产品名称 Product name	TJC25066 系列	编号 Document No.	PS4159	版本号 Version No.	0
----------------------	-------------	--------------------	--------	--------------------	---

2.适用范围 Scope

本产品规格书适用于浙江合兴电子元件有限公司生产的 WTW 2.5 阴型 & 阳型电子连接器，产品名称：TJC25066。

This product specification covers the requirement for wire to wire 2.5mm pitch Receptacle & Plug connector, which are designed and manufactured by CWB Electronics(ZheJiang) Co.,LTD. P/N: TJC25066.

3.产品描述 Product description

TJC25066 系列产品为家电连接器产品，产品部件组成如下：

The TJC25066 series connector designed for home appliances connection. part checklist as following form:

Part name	Part No.	Previous part No.	Description
条形连接器针座(面板安装, 含锁紧片保持结构) Receptacle housing(Panel mount, Retainer mountable type)	TJC25066-nARP(**-*)	TJC2509C-nAR	PA66 UL94 V-0
锁紧片 Retainer	TJC2509B-nS (**-*)	TJC2509B-nYS	PA66+GF UL94 V-0 GWT750°C
条形连接器孔座(含锁紧片保持结构) Plug housing(Retainer mountable type)	TJC25066-nY(**-*)	TJC2509C-nY	PA66 UL94 V-0
插簧 Socket contact	CH-TJC2509-**-*	TJC2509	AWG24~AWG22
插簧 Socket contact	CH-TJC2509-1-**-*	TJC2509-1	AWG28~AWG26
插针 Pin contact	CZ-TJC25066-**-*	CZ-TJC2509C	AWG24~AWG20
插针 Pin contact	CZ-TJC25066-1-**-*	CZ-TJC2509C-1	AWG28~AWG26

4.相关标准 Related standards

以下参考文件是本规格书的一个组成部份。若本规格书中的要求与产品图纸发生冲突，则产品图中的要求为优先；若本规格书中的要求与参考文件中的要求冲突，则本规格书为优先。

The following documents form a part of this specification. In the event of conflict between the requirements of this specification and the product drawing, the product drawing shall take precedence. In the event of conflict between the requirements of this specification and the referenced documents, this specification shall take precedence.

GB/T 2421 电工电子产品环境试验 第一部分 总则

Testing method for environmental of electrical connectors Class 1: General principles

GB/T 2423 电工电子产品环境试验方法

Testing method for environmental of electrical connectors

GB/T 2424 电工电子产品环境试验导则

Testing method for environmental of electrical connectors

GB/T 5095 电子设备用机电元件基本试验规程及测量方法

Testing procedure/method for components of electric equipment

产品名称 Product name	TJC25066 系列	编号 Document No.	PS4159	版本号 Version No.	0
----------------------	-------------	--------------------	--------	--------------------	---

EIA-364 EIA-364 系列标准
 EIA-364 series standards
 产品符合 RoHS 标准。
 The product should comply with RoHS.

5. 参数范围 Parameter ratings:

额定电流 [AC(有效值)/DC] Rated current [AC(rms)/DC]	AWG20# 4A Max.	AWG22# 3A Max.	AWG24# 2A Max.	AWG26# 1.5A Max.	AWG28 1.0A Max.
适用面板 Applicable panel	Board thickness:0.5mm-1.8mm				
额定电压[AC(有效值)/DC] Rated voltage [AC(rms)/DC]	250V				
使用温度范围（包含温升） Operating temperature range (includetemperature rise)	-25℃~+85℃				
适用线型（具体适用线型请参考 压接规格书） Applicable wires(Please refer to the crimping specification for details)	CZ-TJC25066: Wire size:AWG24~AWG20 (0.22mm ² -0.52 mm ²) Insulation diameter:1.2mm-1.9mm				
	CZ-TJC25066-1: Wire size:AWG28~AWG26 (0.08mm ² -0.13mm ²) Insulation diameter: 1.2mm-1.3mm				
	CH-TJC2509: Wire size: AWG24~AWG22 (0.22mm ² -0.32mm ²) Insulation diameter: 1.4mm-1.6mm				
	CH-TJC2509-1: Wire size: AWG28~AWG26 (0.08mm ² -0.13mm ²) Insulation diameter: 1.2mm-1.3mm				

产品名称 Product name	TJC25066 系列	编号 Document No.	PS4159	版本号 Version No.	0
----------------------	-------------	--------------------	--------	--------------------	---

6. 产品性能 Performance

6.1 机械性能 Mechanical

序号 No.	项 目 Item	测试条件 Test condition	规 格 Requirement	
6.1.1	外观 Appearance	目测 Checking by eyes 视力: 1.0 以上 Eyesight: > 1.0 照明: (200~300) lx Lamp: (200~300) lx 目测距离: (0.3~0.5) m Space: (0.3~0.5) m GB/T 5095.1 Method 1a	1. 塑料件表面应无明显疤痕、凹陷、开裂及影响使用的变形。 Plastic part: smooth and flat surface without discolor, broken, crack, and distortion, etc. 2. 金属件表面无锈蚀、氧化、无明显的机械损伤及电镀层脱落等缺陷。 Metal part: bright and even surface without rust, oxide, fog and obvious physical damage, etc.	
6.1.2	端子插入力与固定力 Insertion force and retention force for terminal	应测量将端子沿轴线方向插入孔座和拔出孔座的力(测试速度:25mm/min) The force of inserting and pulling the contact into and out of the housing along the axis shall be measured (Testing speed: <25 mm/min.) GB/T 5095.8 Method 15d / EIA-364-29B	插入力: ≤10N 固定力: ≥15N Insertion force: ≤10N Retention force: ≥15N	
6.1.3	插簧与插针的插拔力 Insertion and withdrawal force for pin in the contact	固定连接器和/或测力计, 在端子轴线方向将插簧插入和拔出插簧, 测试速度不大于 25 mm/min。 Insert the pin contact into and pull out the socket contact in the direction of the terminal axis (Testing speed: <25 mm/min.) GB/T 5095.8 Method 16e / EIA-364-13B	插入力: ≤9.8N 拔出力: ≥0.2N Insertion force: ≤9.8N Withdrawal force: ≥0.2N	
6.1.4	压着部位抗张强度 Crimp tensile strength	在已压接端子的头部和导线上施加拉力, 并测量将导线从端子拉出或导线断裂所需的力, 测试速度不大于 25 mm/min。 Pulling load shall be applied to a correctly crimped contact and a wire. The load required to pull the wire out of the contact or break the wire shall be measured. (Testing speed: <25 mm/min.) GB/T5095.8 Method 16d / EIA-364-08B	AWG 20: 49 N Min. AWG 22: 39.2 N Min. AWG 24: 29.4 N Min. AWG 26: 19.6 N Min. AWG 28: 9.8 N Min.	
6.1.5	成品插入力与拔出力(去锁扣) Insertion force and withdrawal force (without lock)	将装有已压接端子的孔座与阳连接器做插入和拔出, 测量首次插入力、首次拔出力及第30次拔出力, 测试速度不大于25 mm/min。 A housing with crimped contacts and a receptacle housing shall be mated and unmated on the mating axis. Initial insertion and withdrawal forces and withdrawal force at 30th shall be measured. (Testing speed: <25 mm/min.) GB/T 5095.7 Method 13b / EIA-364-13B	No. of poles	首次插入力 Insertion (1st) Max. 拔出力(最小值) Withdrawal (Min.) 首次拔出力 Withdrawal (1st) Min. 三十次后拔出力 Withdrawal (30th) Min.
			2	20N 1.1N 0.8N
			3	25N 1.5N 1.0N
			4	30N 2.0N 1.2N
			5	35N 2.5N 1.5N
			6	40N 3.0N 2.0N
			7	45N 3.5N 2.5N
			8	50N 4.0N 3.0N
			9	55N 4.5N 3.5N
			10	60N 5.0N 4.0N
			11	65N 5.5N 4.5N

产品名称 Product name	TJC25066 系列	编号 Document No.	PS4159	版本号 Version No.	0
----------------------	-------------	--------------------	--------	--------------------	---

			12	70N	6.0N	5.0N
6.1.6	机械振动 Vibration	<p>插合连接器, 串联在直流电源上, 电流100mA; 并模拟正常工作状态: 振频为 (10~55~10) Hz, 每个循环时间为1分钟, 振幅1.52mm。沿XYZ三轴正反方向各循环2小时。</p> <p>Mate connectors subjected them to following vibration conditions, for a period of 2 hours in each of 3 mutually perpendicular axes, 100 mA current shall be applied.</p> <p>Frequency: (10~55~10)Hz/min.</p> <p>Cycling time: 1 min.</p> <p>Amplitude: 1.52mm.</p> <p>GB/T 5095.4 Method 6d / EIA-364-28D</p>	<p>外观: 无损伤 (参照6.1.1)</p> <p>Appearance: no damage.(refer to 6.1.1)</p> <p>接触电阻: 20mΩ Max.</p> <p>Contact resistance: 20mΩ Max.</p> <p>电流中断时间: 1μsec Max</p> <p>Current interruption: 1μsec Max</p>			
6.1.7	机械冲击 Shock	<p>连接器相配, 沿XYZ三轴正反方向各冲击3次(总共18次), 在测试过程中通以100mA电流。</p> <p>冲击强度: 490m/s²</p> <p>持续时间: 11ms</p> <p>Mate connectors and subject them to the following shock conditions, 3 times of shock shall be applied for each 6 directions along 3 mutually perpendicular axes, passing DC 100mA current during the test.(total of 18 shocks).</p> <p>Test pulse: 490m/s²</p> <p>Duration: 11ms</p> <p>GB/T 5095.4 Method 6c / EIA-364-27B</p>	<p>外观: 无损伤 (参照6.1.1)</p> <p>Appearance: no damage.(refer to 6.1.1)</p> <p>电流中断时间: 1μsec Max</p> <p>Current interruption: 1μsec Max</p>			
6.1.8	机械寿命 Durability	<p>以每分钟 10 次的速度插拔 50 次。</p> <p>50 cycles for mating and unmating test at the speed of 10 cycles per minute.</p> <p>GB/T 5095.5 Method 9a / EIA-364-09C</p>	<p>外观: 无损伤 (参照6.1.1)</p> <p>Appearance: no damage.(refer to 6.1.1)</p> <p>接触电阻: 20mΩ Max.</p> <p>Contact resistance: 20mΩ Max.</p>			
6.1.9	锁扣强度 Lock strength	<p>固定连接器和测力计, 在连接器轴线方向将配合后的连接器拔出, 速度不大于25 mm/min, 测量时连接器应无端子或端子不影响锁扣强度的测量结果。</p> <p>Apply axial withdraw force on the connector which without contact or the contacts shall not affect lock strength at a rate less than 25 mm/min.</p> <p>GB/T 5095.8 Method 15a / EIA-364-29B</p>	<p>2pin~3pin:20N Min.</p> <p>4pin~12pin:30N Min.</p>			

6.2 电气性能 Electrical

序号 No.	项目 Item	测试条件 Test condition	规格 Requirement
6.2.1	接触电阻 Contact resistance	<p>插配阴阳连接器后, 用小功率电路进行测试。</p> <p>Mate connectors with dry circuit to test contact resistance</p> <p>GB/T 5095.2 Method 2a / EIA-364-23B</p>	<p>10m Ω Max. (Initial)</p> <p>20mΩ Max. (Final)</p>
6.2.2	绝缘电阻 Insulation resistance	<p>在相邻接触件之间或地线之间, 用 500V DC 电压进行测试。</p> <p>Apply a voltage of 500V DC between adjacent contacts and between contacts to ground.</p> <p>GB/T 5095.2 Method 3a / EIA-364-21C</p>	<p>1000 MΩ Min. (Initial)</p> <p>500 MΩ Min. (Final)</p>
6.2.3	耐电压 Withstand voltage	<p>相邻接触件之间或地线之间施加 1000V AC (有效值), 漏电流 1mA 的电压作用, 时间 1min.</p> <p>Apply a voltage of 1000V AC (rms) and leakage current of 1mA between adjacent contacts or ground cables for 1 minute.</p> <p>GB/T 5095.2 Method 4a / EIA-364-20B</p>	<p>外观: 无击穿和飞弧现象</p> <p>Appearance: no breakdown or flashover</p>

产品名称 Product name	TJC25066 系列	编号 Document No.	PS4159	版本号 Version No.	0
----------------------	-------------	--------------------	--------	--------------------	---

6.2.4	温升 Temperature rise	<p>插入连接器，通以最大允许电流，测温度的差值</p> <p>Mate connectors and measure the temperature rise of contact when the maximum AC rated current is passed.</p> <p>GB/T 5095.3 Method 5a / EIA-364-70A</p>	$\Delta 30^{\circ}\text{C}$ Max.
-------	------------------------	--	----------------------------------

6.3 环境性能 Environmental

序号 No.	项目 Item	测试条件 Test condition	规格 Requirement										
6.3.1	耐高温 Heat resistance	<p>连接器配合后，于 $(85\pm 2)^{\circ}\text{C}$ 的空气中放置 240 小时，再回到室温中放置 $(1\sim 2)$ 小时测定。</p> <p>Mated connectors exposed to the condition of $(85\pm 2)^{\circ}\text{C}$ for 240 hours, recovery time $(1\sim 2)$ hours.</p> <p>GB/T 5095.6 Method 11i / EIA-364-17B</p>	<p>外观：无损伤（参照6.1.1）</p> <p>Appearance: no damage.(refer to 6.1.1)</p> <p>接触电阻：20mΩ Max.</p> <p>Contact resistance: 20mΩ Max.</p> <p>绝缘电阻：500 MΩ Min.</p> <p>Insulation resistance:500 MΩ Min.</p> <p>耐电压：1000V Min.</p> <p>Withstand voltage: 1000V Min.</p>										
6.3.2	恒定湿热 Humidity	<p>温度$(40\pm 2)^{\circ}\text{C}$，相对湿度$(90\sim 95)\%$</p> <p>搁置时间 240 小时，取出恢复 $(1\sim 2)$ 小时后检查。</p> <p>Mated connectors exposed to the condition of temperature $(40\pm 2)^{\circ}\text{C}$, humidity $(90\sim 95)\%$ for 240 hours, recovery time $(1\sim 2)$ hours.</p> <p>GB/T 5095.6 Method 11c / EIA-364-31B</p>	<p>外观：无损伤（参照6.1.1）</p> <p>Appearance: no damage.(refer to 6.1.1)</p> <p>接触电阻：20mΩ Max.</p> <p>Contact resistance: 20mΩ Max.</p> <p>绝缘电阻：500 MΩ Min.</p> <p>Insulation resistance: 500 MΩ Min.</p> <p>耐电压：1000V Min.</p> <p>Withstand voltage: 1000V Min.</p>										
6.3.3	温度循环 Temperature cycling	<p>把试验样品分别放入高、低温试验箱中，按下列步骤调试温度：</p> <p>a) 在$(-55\pm 2)^{\circ}\text{C}$的恒温条件下放置 0.5 小时；</p> <p>b) 在$(85\pm 2)^{\circ}\text{C}$的恒温条件下放置 0.5 小时；</p> <p>从 a)到 b)为一个循环，周期温度转换时间应不大于 5 分钟，共进行 25 个循环,恢复 $(1\sim 2)$ 小时后检查。</p> <p>Mated connectors shall be tested under the following conditions</p> <table border="1"> <thead> <tr> <th>Temperature $^{\circ}\text{C}$</th> <th>Duration</th> </tr> </thead> <tbody> <tr> <td>1 -55± 2</td> <td>0.5h</td> </tr> <tr> <td>2 Room Temp.</td> <td>5 minutes Max.</td> </tr> <tr> <td>3 +85± 2</td> <td>0.5h</td> </tr> <tr> <td>4 Room Temp.</td> <td>5 minutes Max.</td> </tr> </tbody> </table> <p>Step 1 to 4 is one cycle,25 cycles shall be tested, recovery time $(1\sim 2)$ hours.</p> <p>GB/T 5095.6 method 11d / EIA-364-32C</p>	Temperature $^{\circ}\text{C}$	Duration	1 -55 ± 2	0.5h	2 Room Temp.	5 minutes Max.	3 +85 ± 2	0.5h	4 Room Temp.	5 minutes Max.	<p>外观：无损伤（参照6.1.1）</p> <p>Appearance: no damage.(refer to 6.1.1)</p> <p>接触电阻：20mΩ Max.</p> <p>Contact resistance: 20mΩ Max.</p> <p>绝缘电阻：500 MΩ Min.</p> <p>Insulation resistance: 500 MΩ Min.</p> <p>耐电压：1000V Min.</p> <p>Withstand voltage: 1000V Min.</p>
Temperature $^{\circ}\text{C}$	Duration												
1 -55 ± 2	0.5h												
2 Room Temp.	5 minutes Max.												
3 +85 ± 2	0.5h												
4 Room Temp.	5 minutes Max.												
6.3.4	盐雾 Salt spray	<p>把试验样品从试验箱顶悬挂下来，采用浓度为 $(5\pm 1)\%$(质量百分比)的氯化钠溶液，在$(35\pm 2)^{\circ}\text{C}$温度下连续雾化 48 小时，试验后用流动的蒸馏水轻轻洗去表面沉积物。在常温常湿条件下恢复 $(1\sim 2)$ 小时。</p> <p>48 hours spray, at temp $(35\pm 2)^{\circ}\text{C}$, NaCl mist concentration $(5\pm 1)\%$. After test wash parts and put it into room ambient for $(1\sim 2)$ hours.</p> <p>GB/T 5095.6 Method 11f / EIA-364-26B</p>	<p>外观：无损伤(五金件应无露出底金属的严重锈蚀;使用预镀好的型材，其落料面允许有不影响其性能的轻微腐蚀。)</p> <p>Appearance: no damage (no erosion on material exposed. and plating material, slight erosion on the cutting surface is acceptable).</p> <p>接触电阻：20mΩ Max.</p> <p>Contact resistance: 20mΩ Max.</p>										

产品名称 Product name	TJC25066 系列	编号 Document No.	PS4159	版本号 Version No.	0
----------------------	-------------	--------------------	--------	--------------------	---

7.测试分组 Test sequences (Samples:5PCS)

测试组 Group number	A	B	C	D	E	F	G	H	I	J	K	L	M	N
外观 Appearance	1	1	1	1	1,5	1	1,5	1	1,7	1	1,7	1,7	1,7	1,5
端子插入力与固定力 Insertion force and retention force for terminal	2													
插簧与插针的插拔力 Insertion and withdrawal force for pin in the contact		2												
压着部位抗张强度 Crimp tensile strength			2											
成品插入力与拔出力（去锁扣） Insertion force and withdrawal force (without lock)				2										
机械振动 Vibration					3									
机械冲击 Shock						2								
机械寿命 Durability							3		5					
锁扣强度 Lock strength								2						
接触电阻 Contact resistance					2,4		2,4		2,6		2,4	2,4	2,4	2,4
绝缘电阻 Insulation resistance									3		5	5	5	
耐电压 Withstand voltage									4		6	6	6	
温升 Temperature rise										2				
耐高温 Heat resistance											3			
恒定湿热 Humidity												3		
温度循环 Temperature cycling													3	
盐雾 Salt spray														3

产品名称
Product name

TJC25066 系列

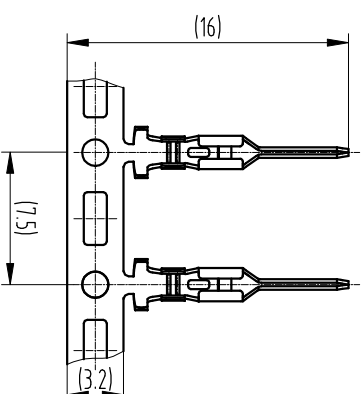
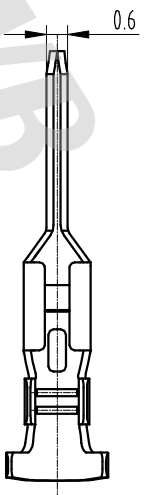
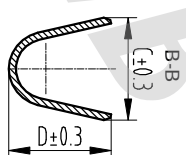
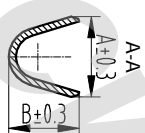
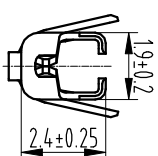
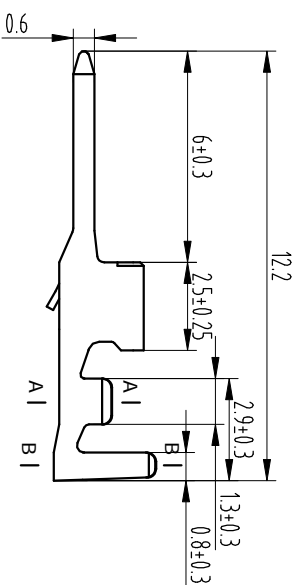
编号
Document No.

PS4159

版本号
Version No.

0

General Tolerance		Dimension	Tolerance	Rev. No	Location	Description	Reviser	Date
0~3		±0.13						
3~18		±0.23						
18~50		±0.35						
≥50		±0.55						



Contract view
1:2

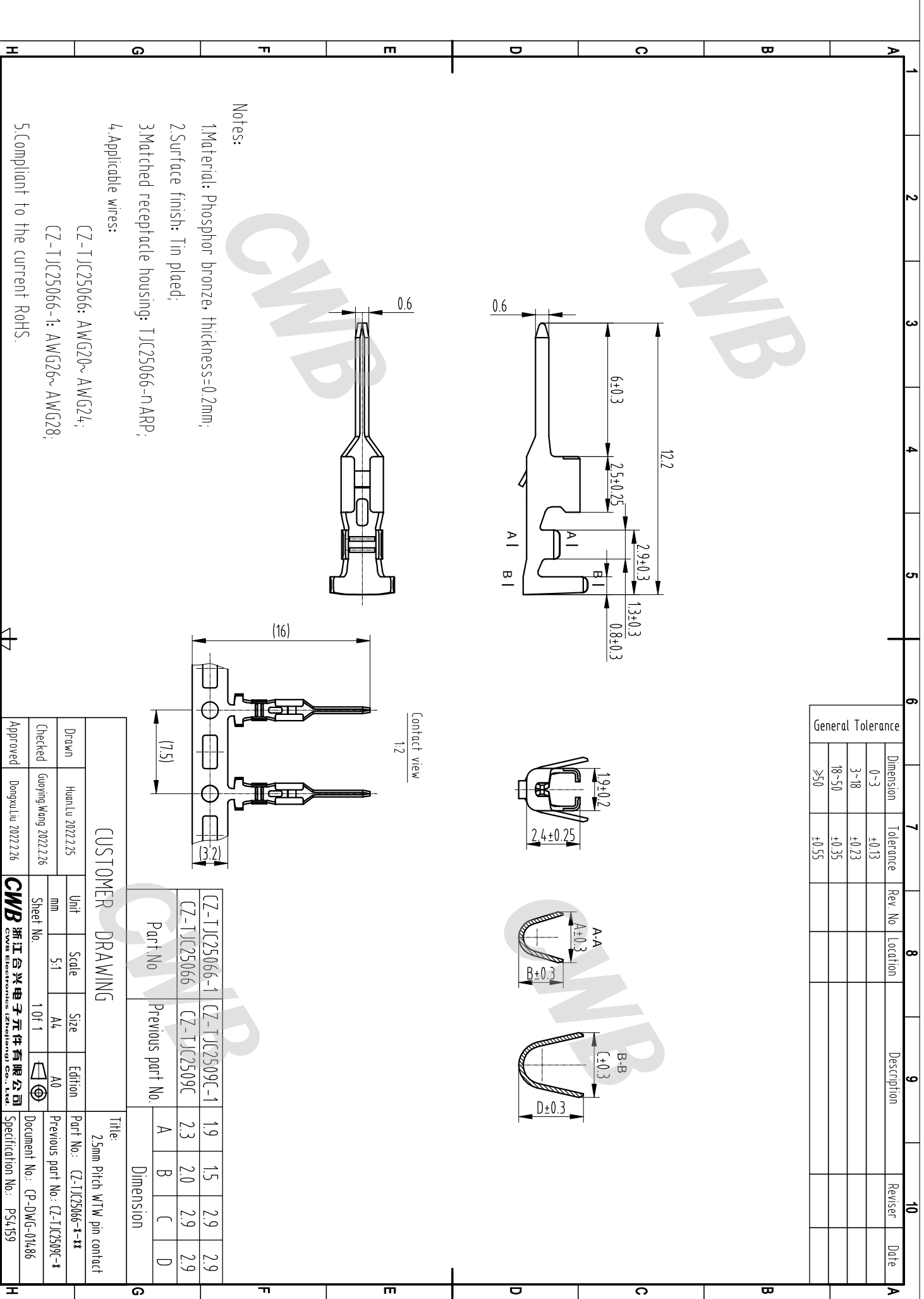
Part No	Previous part No.	A	B	C	D
CZ-TJC25066-1	CZ-TJC2509C-1	1.9	1.5	2.9	2.9
CZ-TJC25066	CZ-TJC2509C	2.3	2.0	2.9	2.9

CUSTOMER DRAWING

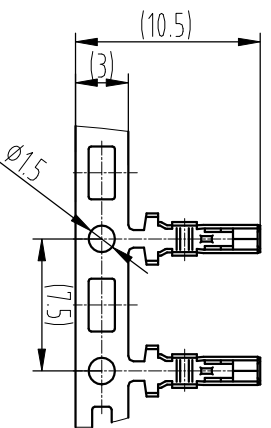
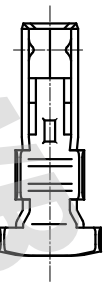
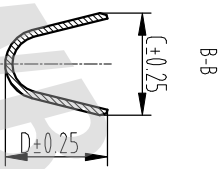
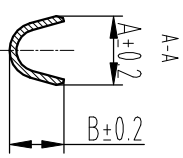
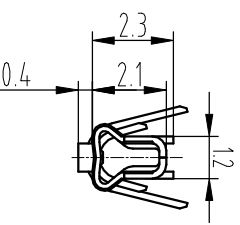
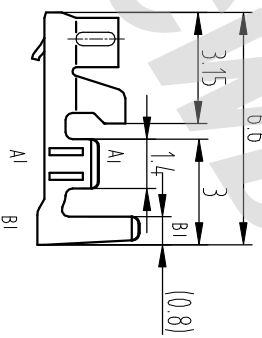
Title:
2.5mm Pitch WTW pin contact

- Notes:
1. Material: Phosphor bronze, thickness=0.2mm;
 2. Surface finish: Tin plaed;
 3. Matched receptacle housing: TJC25066-n ARP;
 4. Applicable wires:
CZ-TJC25066: AWG20~AWG24;
CZ-TJC25066-1: AWG26~AWG28;
 5. Compliant to the current RoHS.

CUSTOMER DRAWING				Title: 2.5mm Pitch WTW pin contact	
Drawn	Huonlu 2022.2.25	Unit	mm	Scale	5:1
Checked	Guoying Wang 2022.2.26	Sheet No.	1 of 1	Size	A4
Approved	Dongxuliu 2022.2.26	Edition	A0	Part No.:	CZ-TJC25066-x-1x
		Previous part No.:	CZ-TJC2509C-x		
		Document No.:	CP-DWG-01486		
		Specification No.:	PS4159		



Dimension	Tolerance	Rev. No	Location	Description	Reviser	Date
0~3	±0.13					
3~18	±0.23					
18~50	±0.35					
≥50	±0.55					



Notes:

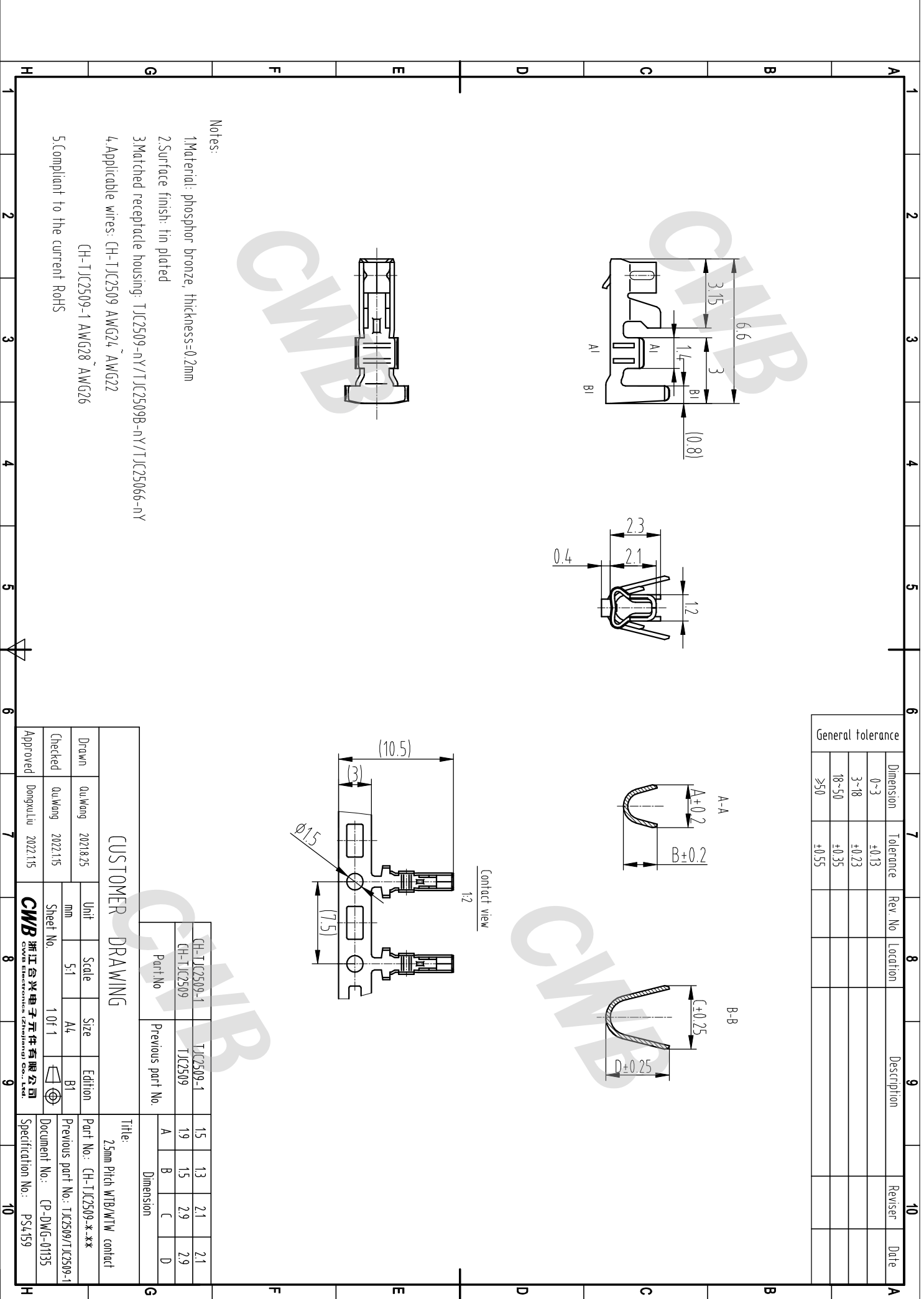
- 1.Material: phosphor bronze, thickness=0.2mm
- 2.Surface finish: tin plated
- 3.Matched receptacle housing: TJC2509-n/Y/TJC2509B-n/Y/TJC25066-n/Y
- 4.Applicable wires: CH-TJC2509 AWG24~AWG22
CH-TJC2509-1 AWG28~AWG26
- 5.Compliant to the current RoHS

CUSTOMER DRAWING

Part No	Previous part No.	Dimension
CH-TJC2509-1	TJC2509-1	15 13 2.1 2.1
CH-TJC2509	TJC2509	19 15 2.9 2.9
A	B	C
B	C	D

CUSTOMER DRAWING				Title:	
Drawn	QuWang	2021.8.25	Unit	Scale	Size
Checked	QuWang	2022.1.15	mm	5:1	A4
Approved	Dongxuliu	2022.1.15	Sheet No.	1 of 1	B1
			Part No.: CH-TJC2509 * **		
			Previous part No.: TJC2509/TJC2509-1		
			Document No.: CP-DWG-01135		
			Specification No.: PS4159		

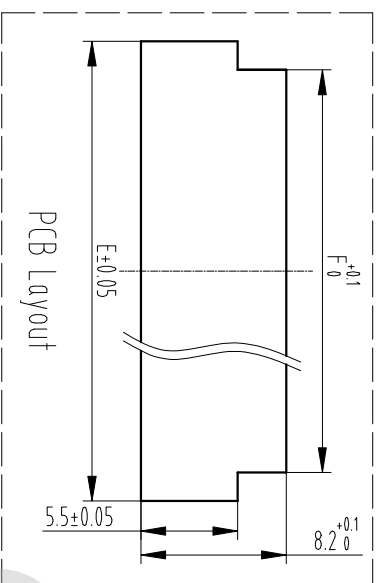
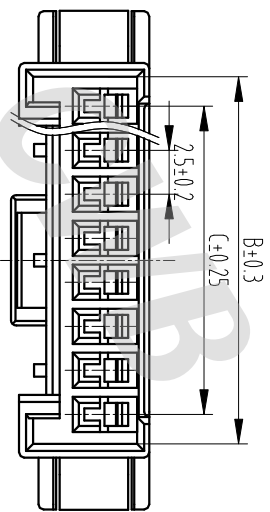
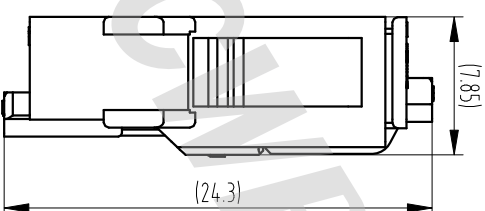
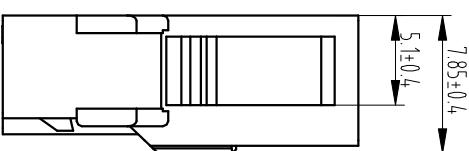
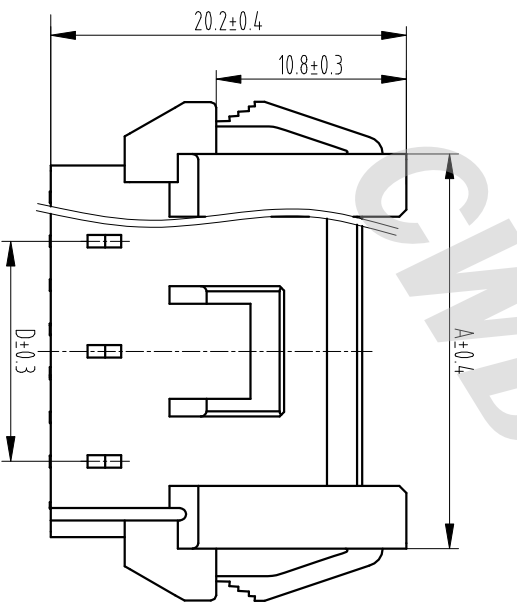
CWB 浙江合兴电子元件有限公司
CWB ELECTRONICS (Zhejiang) Co., Ltd.



General Tolerance		Dimension	Tolerance	Rev. No	Location	Description	Reviser	Date
	0~3		±0.13					
	3~18		±0.23					
	18~50		±0.35					
	≥50		±0.55					

Assembly view

(DIM FYI)



Ckts (N)	Part No.	Previous part No.	A	B	C	D	E	F
12	TJC25066-12ARP	TJC2509C-12AR	32.4	30.85	27.5	22.5	36.1	32.8
11	TJC25066-11ARP	TJC2509C-11AR	29.9	28.35	25	20	33.6	30.3
10	TJC25066-10ARP	TJC2509C-10AR	27.4	25.85	22.5	17.5	31.1	27.8
9	TJC25066-9ARP	TJC2509C-9AR	24.9	23.35	20	15	28.6	25.3
8	TJC25066-8ARP	TJC2509C-8AR	22.4	20.85	17.5	12.5	26.1	22.8
7	TJC25066-7ARP	TJC2509C-7AR	19.9	18.35	15	10	23.6	20.3
6	TJC25066-6ARP	TJC2509C-6AR	17.4	15.85	12.5	10	21.1	17.8
5	TJC25066-5ARP	TJC2509C-5AR	14.9	13.35	10	/	18.6	15.3
4	TJC25066-4ARP	TJC2509C-4AR	12.4	10.85	7.5	/	16.1	12.8
3	TJC25066-3ARP	TJC2509C-3AR	9.9	8.35	5.0	/	13.6	10.3
2	TJC25066-2ARP	TJC2509C-2AR	8.9	7.35	2.5	/	12.6	9.3

Notes:

- 1.Material: PA66 UL94 V-0;
- 2.Matched plug housings: TJC25066-nY;
- 3.Matched lock plate: TJC2509B-nS;
- 4.Matched pin contact: CZ-TJC25066/CZ-TJC25066-1;
- 5.Packaging: Bag packaging;
- 6.Compliant to the current RoHS.

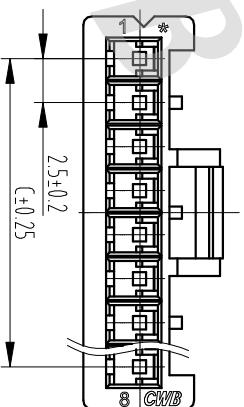
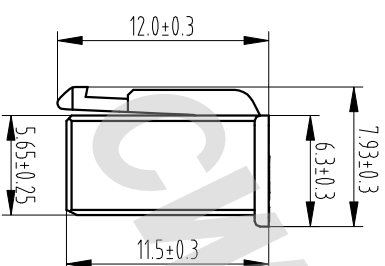
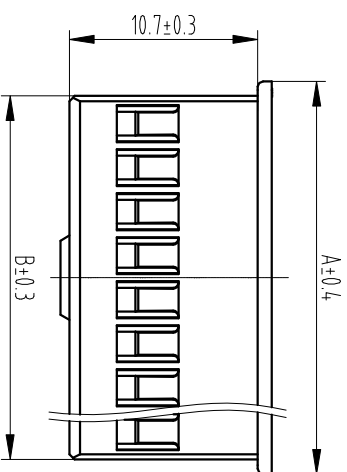
CUSTOMER DRAWING

Title: 25mm Pitch WTW receptacle housing

Drawn	Huonlu 2022.2.25	Unit	Scale	Size	Edition	Part No.:	TJC25066-nARP**x1
Checked	Guoying Wang 2022.2.26	mm	2.5:1	A4	A0	Previous part No.:	TJC2509C-nAR
Approved	Dongxuliu 2022.2.26	Sheet No.	1 of 1			Document No.:	CP-DWG-01484
						Specification No.:	PS459

CWB 浙江合兴电子元件有限公司
CWB Electronics (Zhejiang) Co., Ltd.

General Tolerance			
Dimension	Tolerance	Rev. No	Location
0~3	±0.13		
3~18	±0.23		
18~50	±0.35		
≥50	±0.55		



Notes:

1. Material: PA66 UL94, V-0;
2. Matched receptacle housing: TJC25066-nARP;
3. Matched lock plate: TJC2509B-nS;
4. Matched socket contact: CH-TJC2509/CH-TJC2509-1;
5. Packaging: Bag packaging;
6. Compliant to the current RoHS.

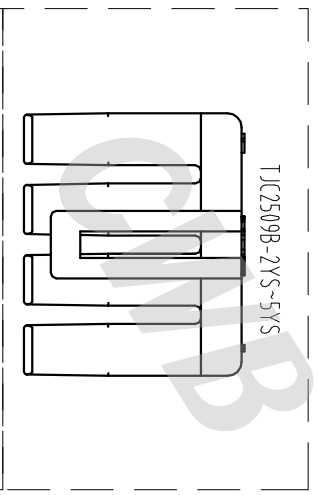
12	TJC25066-12Y	TJC2509C-12Y	32.3	30.65	27.5
11	TJC25066-11Y	TJC2509C-11Y	29.8	28.15	25
10	TJC25066-10Y	TJC2509C-10Y	27.3	25.65	22.5
9	TJC25066-9Y	TJC2509C-9Y	24.8	23.15	20
8	TJC25066-8Y	TJC2509C-8Y	22.3	20.65	17.5
7	TJC25066-7Y	TJC2509C-7Y	19.8	18.15	15
6	TJC25066-6Y	TJC2509C-6Y	17.3	15.65	12.5
5	TJC25066-5Y	TJC2509C-5Y	14.8	13.15	10
4	TJC25066-4Y	TJC2509C-4Y	12.3	10.65	7.5
3	TJC25066-3Y	TJC2509C-3Y	9.8	8.15	5.0
2	TJC25066-2Y	TJC2509C-2Y	8.8	7.15	2.5

CUSTOMER DRAWING

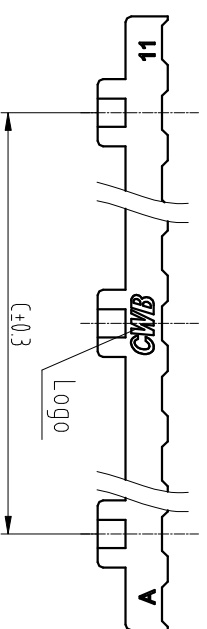
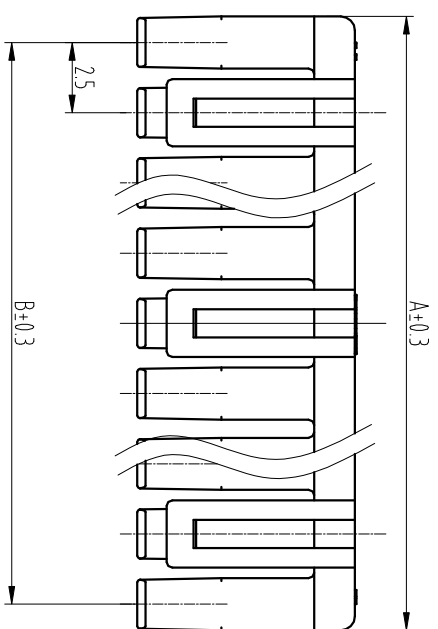
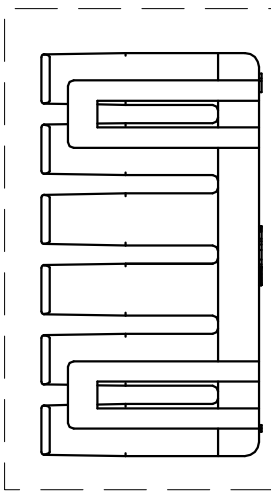
Title: 25mm Pitch WTW plug housing

Drawn	Huonlu 2022.2.25	Unit	mm	Scale	2.5:1	Size	A4	Edition	A0	Part No.:	TJC25066-nY(x*x-x)
Checked	Guoying Wang 2022.2.26	Sheet No.	1 of 1							Previous part No.:	TJC2509C-nY
Approved	Dongxuli 2022.2.26	CWB 浙江合兴电子元件有限公司 CWB CWS Electronics (Zhejiang) Co., Ltd.		Document No.:	CP-DWG-014.85	Specification No.:	PS4159				

General tolerance		Dimension	Tolerance	Rev. No	Location	Description	Reviser	Date
	0~3	± 0.13						
	3~18	± 0.23						
	18~50	± 0.35						
	≥ 50	± 0.55						



TJC2509B-6YS-7YS



16	TJC2509B-16S	TJC2509B-16YS	39.35	37.5	32.5
15	TJC2509B-15S	TJC2509B-15YS	36.85	35.0	30.0
14	TJC2509B-14S	TJC2509B-14YS	34.35	32.5	27.5
13	TJC2509B-13S	TJC2509B-13YS	31.85	30.0	25.0
12	TJC2509B-12S	TJC2509B-12YS	29.35	27.5	22.5
11	TJC2509B-11S	TJC2509B-11YS	26.85	25.0	20.0
10	TJC2509B-10S	TJC2509B-10YS	24.35	22.5	17.5
9	TJC2509B-9S	TJC2509B-9YS	21.85	20.0	15.0
8	TJC2509B-8S	TJC2509B-8YS	19.35	17.5	12.5
7	TJC2509B-7S	TJC2509B-7YS	16.85	15.0	10.0
6	TJC2509B-6S	TJC2509B-6YS	14.35	12.5	10.0
5	TJC2509B-5S	TJC2509B-5YS	11.85	10.0	/
4	TJC2509B-4S	TJC2509B-4YS	9.35	7.5	/
3	TJC2509B-3S	TJC2509B-3YS	6.85	5.0	/
2	TJC2509B-2S	TJC2509B-2YS	4.35	2.5	/

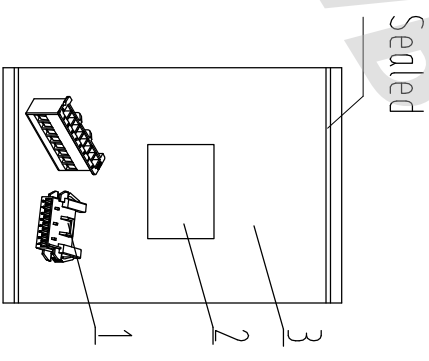
- Notes:
1. Material: PA66+GF UL94V-0 GWT750°C
 2. Matched plug housing: TJC25066-nARP/TJC2509-nARP/TJC2509-nAR
 3. Matched receptacle housing: TJC25066-nY
 4. Matched housing: TJC2509B-nY
 5. Packaging: packing bag
 6. Compliant to the current RoHS

CUSTOMER DRAWING				Title:	
Drawn	QuWang	2021.8.25	Unit	Scale	Size
Checked	QuWang	2022.1.15	mm	4:1	A4
Approved	Dongxuliu	2022.1.15	Sheet No.	1 of 1	B1
			Part No.: TJC2509B-1S x(KK-x)		
			Previous part No.: TJC2509B-nYS		
			Document No.: CP-DWG-01129		
			Specification No.: PS4159		

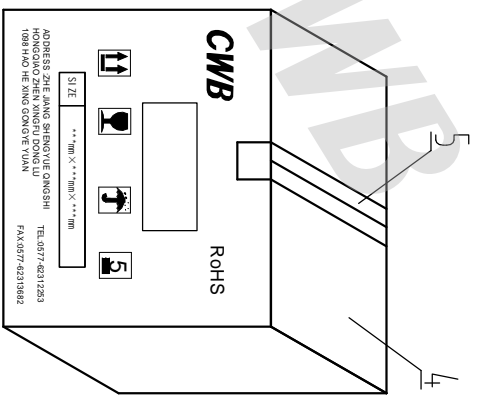
1 2 3 4 5 6 7 8 9 10

A B C D E F G H

Packing bag



Packing box



General Tolerance		Dimension	Tolerance	Rev. No	Location	Description	Reviser	Date
	0~3	±0.13						
	3~18	±0.23						
	18~50	±0.35						
	≥50	±0.55						

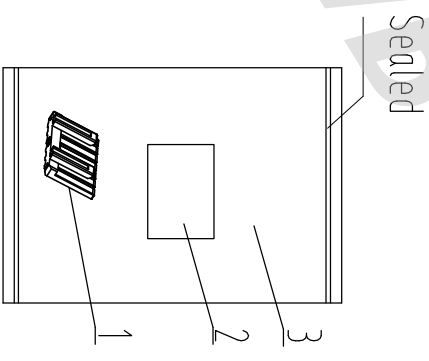
Number	Designation	Part No.	Previous part No.	Pcs/bag	Part No.	Previous part No.	Pcs/bag	Remarks
5	Gummed tape	TJC25066-12Y	TJC2509C-12Y	500	TJC25066-12ARP	TJC2509C-12AR	500	
		TJC25066-11Y	TJC2509C-11Y	500	TJC25066-11ARP	TJC2509C-11AR	500	
4	Packing box	TJC25066-10Y	TJC2509C-10Y	1000	TJC25066-10ARP	TJC2509C-10AR	500	
		TJC25066-9Y	TJC2509C-9Y	1000	TJC25066-9ARP	TJC2509C-9AR	500	
3	Packing bag	TJC25066-8Y	TJC2509C-8Y	1000	TJC25066-8ARP	TJC2509C-8AR	500	
		TJC25066-7Y	TJC2509C-7Y	1000	TJC25066-7ARP	TJC2509C-7AR	500	
2	Certificate	TJC25066-6Y	TJC2509C-6Y	1000	TJC25066-6ARP	TJC2509C-6AR	500	
		TJC25066-5Y	TJC2509C-5Y	1000	TJC25066-5ARP	TJC2509C-5AR	1000	
		TJC25066-4Y	TJC2509C-4Y	1000	TJC25066-4ARP	TJC2509C-4AR	1000	
		TJC25066-3Y	TJC2509C-3Y	1000	TJC25066-3ARP	TJC2509C-3AR	1000	
1	TJC25066 series plastic parts	TJC25066-2Y	TJC2509C-2Y	1000	TJC25066-2ARP	TJC2509C-2AR	1000	

CUSTOMER DRAWING

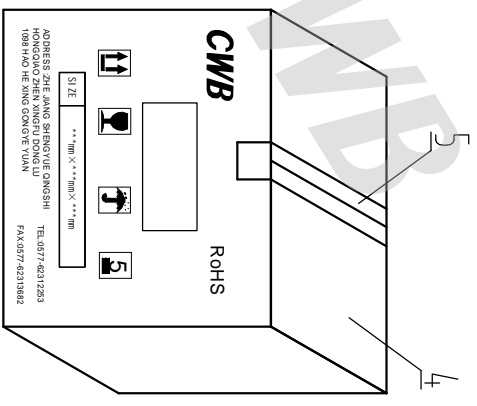
Drawn	Huanlu 2022.2.25	Unit	mm	Scale	/	Size	A4	Edition	B0	Part No.:	TJC25066 series	
Checked	Guoying Wang 2022.2.26	Sheet No.	1 of 1						Previous part No.: JJC2509C series			
Approved	Dongxuliu 2022.2.26	CMB 浙江鑫聚电子有限公司		CMB 浙江鑫聚电子有限公司		CMB 浙江鑫聚电子有限公司		CMB 浙江鑫聚电子有限公司		Document No.:	BZ-DWG-00807	
											Specification No.:	PS4159

Title: Packaging specification

Packing bag



Packing box



General tolerance		Dimension	Tolerance	Rev. No	Location	Description	Reviser	Date
	0~3	±0.13						
	3~18	±0.23						
	18~50	±0.35						
	≥50	±0.55						

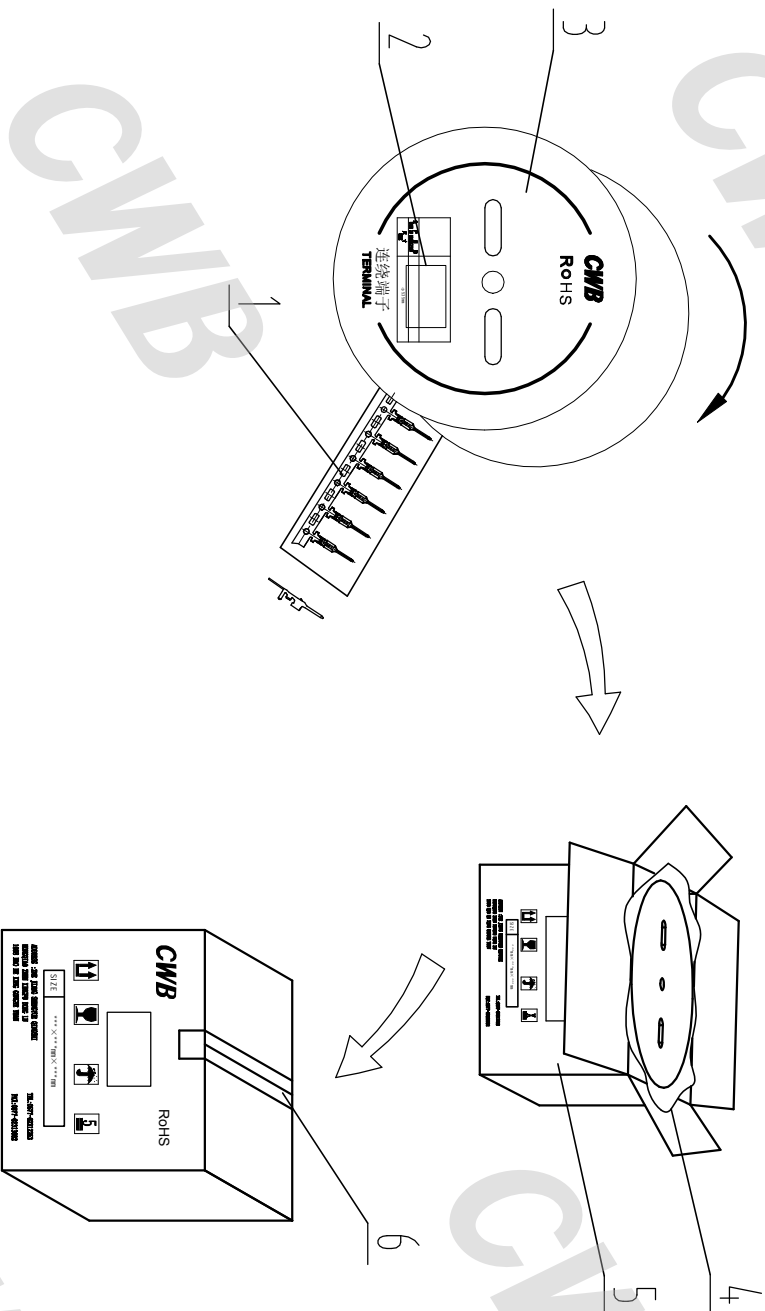
TJC25098-16S	TJC25098-16YS	1000	
TJC25098-15S	TJC25098-15YS	1000	
TJC25098-14S	TJC25098-14YS	1000	
TJC25098-13S	TJC25098-13YS	1000	
TJC25098-12S	TJC25098-12YS	1000	
TJC25098-11S	TJC25098-11YS	1000	
TJC25098-10S	TJC25098-10YS	1000	
TJC25098-9S	TJC25098-9YS	1000	
TJC25098-8S	TJC25098-8YS	1000	
TJC25098-7S	TJC25098-7YS	1000	
TJC25098-6S	TJC25098-6YS	1000	
TJC25098-5S	TJC25098-5YS	1000	
TJC25098-4S	TJC25098-4YS	1000	
TJC25098-3S	TJC25098-3YS	1000	
TJC25098-2S	TJC25098-2YS	1000	

CUSTOMER DRAWING

Drawn	HuanLu 2021.8.26	Unit	mm	Scale	/	Size	A4	Edition	B0	Part No.:	TJC25098-NS *(***)	
Checked	Qu Wang 2021.8.26	Sheet No.	1 of 1		1 of 1		B0		Previous part No.: TJC25098-nYS			
Approved	Dongxuliu 2021.8.26	CWB 浙江合兴电子元件有限公司		CWB CMB Electronics (Zhejiang) Co., Ltd.		1 of 1		B0		Document No.:	BZ-DWG-00647	
											Specification No.:	PS4100/PS4159

Title: Packaging specification

General Tolerance		Dimension	Tolerance	Rev. No	Location	Description	Reviser	Date
		0~3	±0.13					
		3~18	±0.23					
		18~50	±0.35					
		≥50	±0.55					



Number	Part No.	Remarks
6	Gummed tape	
5	Packing box	96000PCS/bag
4	Packing bag	96000PCS/bag
3	Packing reel	8000PCS/disc
2	Certificate	
1	CZ-1JC25066/CZ-1JC2509C	
	CZ-1JC25066-1/CZ-1JC2509C-1	

CUSTOMER DRAWING

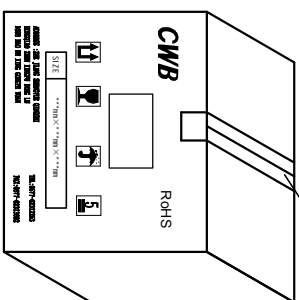
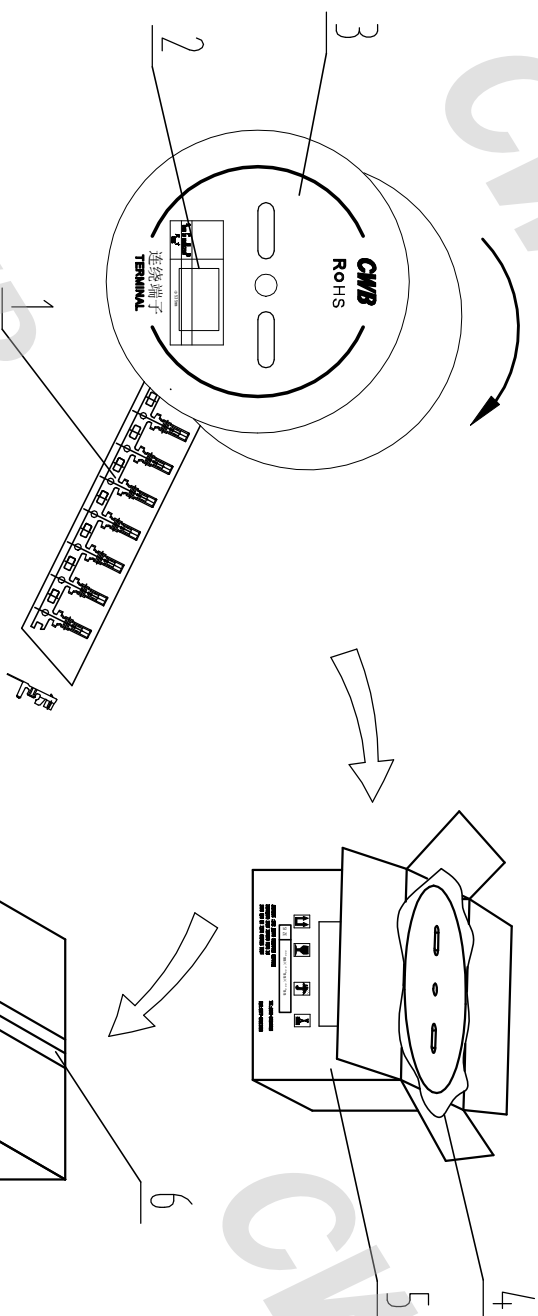
Title: Packaging specification

Drawn	Huanlu 2022.2.25	Unit	mm	Scale	/	Size	A4	Edition	B0	Part No.:	CZ-1JC25066- x
Checked	Guoying Wang 2022.2.26	Sheet No.	1 of 1							Previous part No.:	CZ-1JC2509C- x
Approved	Dongxuli 2022.2.26									Document No.:	BZ-DWG-00808
										Specification No.:	PS4159



浙江慈邦电子科技有限公司
Zhejiang Ciba Electronics Technology Co., Ltd.

Dimension	Tolerance	Rev. No	Location	Description	Reviser	Date
0~3	±0.13					
3~18	±0.23					
18~50	±0.35					
≥50	±0.55					



Number	Designation	Remarks
6	Gummed tape	
5	Packing box	112000PCS/box
4	Packing bag	112000PCS/bag
3	Packing reel	8000PCS/disc
2	Certificate	
1	CH-1JC2509/1JC2509 CH-1JC2509-1/1JC2509-1	

CUSTOMER DRAWING

Title: Packaging specification	
Part No.: CH-1JC2509-x-xx	
Previous part No.: 1JC2509/1JC2509-1	
Document No.: BZ-DWG-00648	
Specification No.: PS4159	
Drawn: Huanlu 2021.8.26	Unit: mm
Checked: Qiu Wang 2021.8.26	Scale: /
Approved: Dongxuliu 2021.8.26	Size: A4
Edition: B2	
Sheet No.: 1 of 1	
CWB 浙江合兴电子元件有限公司 CMB Electronics (Zhejiang) Co., Ltd.	

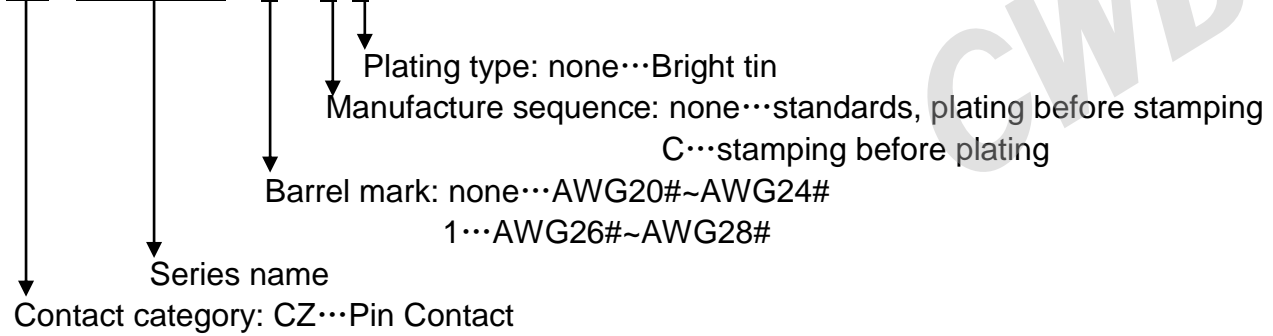
TJC25066 系列命名规则

TJC25066 series naming conventions

1. Contact

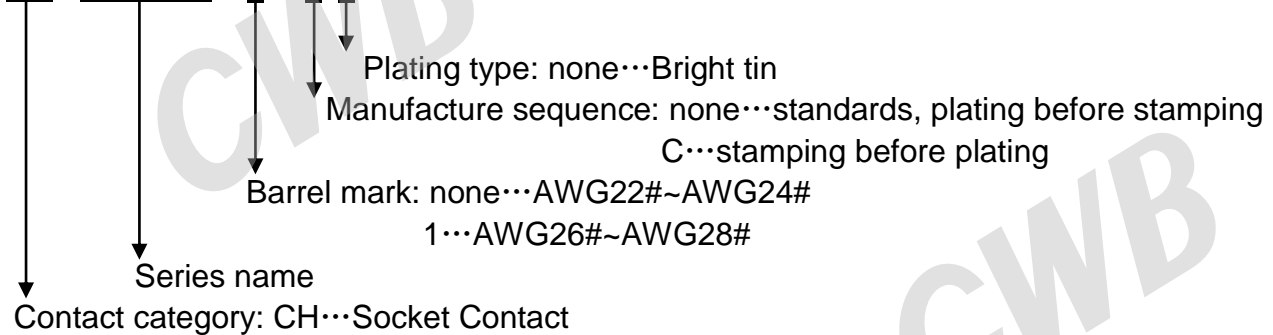
CZ-TJC25066-*-**

CZ - TJC25066 - * - * *



CH-TJC2509-*-**

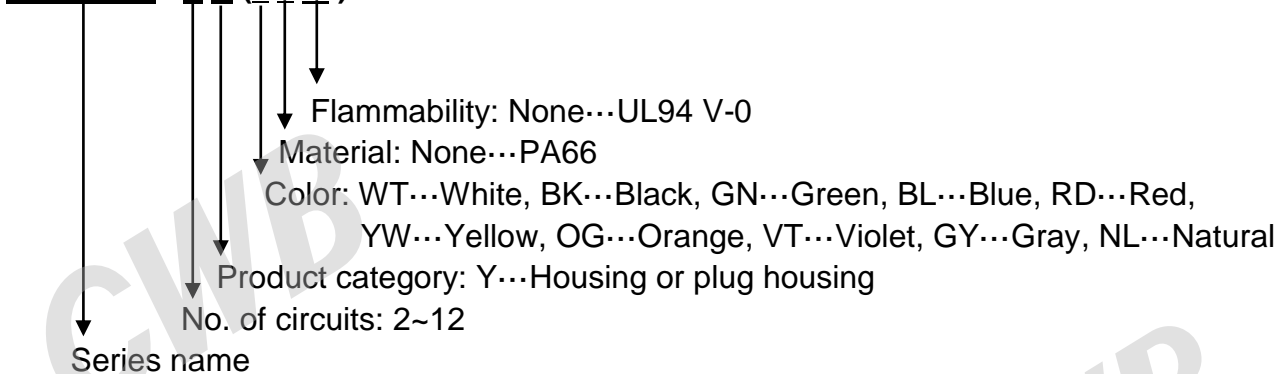
CH - TJC2509 - * - * *



2. Housing

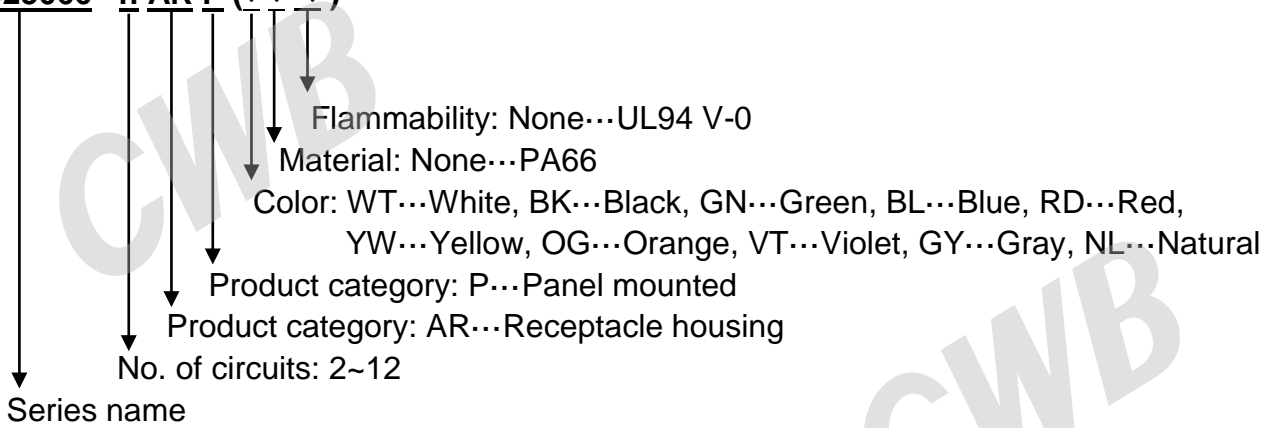
TJC25066-nY (**-*)

TJC25066 - n Y (* * - *)



TJC25066-nARP (-*)**

TJC25066- n AR P (* * - *)



3. Retainer

TJC2509B-nS * (-*)**

TJC2509 B- n S * (* * - *)

