



产品规格书

PRODUCT SPECIFICATION

标题: TJC4001 系列连接器

Title: TJC4001 Connector

目录

Index

1. 更改履历 Change record
2. 范围 Scope
3. 产品描述 Product description
4. 相关标准 Related standards
5. 参数范围 Parameter ratings
6. 产品性能 Performance
7. 测试分组 Test sequences

中国·浙江省乐清市虹桥镇幸福东路 1098 号 合兴工业园 1098, Xingfu `Road(East), CWB Industrial Zone, Hongqiao, Yueqing, Zhejiang 325608, China Tel: 86-577-61313157 (Research & Development Dept.) Tel: 86-577-62312253 (Sales Dept.)	制定 Edit: <u>杨培 2022. 6. 6</u>	产品名称 Product name: <u>TJC4001 系列</u>
	审核 Check: <u>王国英 2022. 7. 7</u>	编号 Document No.: <u>PS4168</u>
	批准 Approval: <u>刘冬旭 2022. 7. 7</u>	版本 Revision: <u>1</u>



产品规格书

PRODUCT SPECIFICATION

1.更改履历 Change record

版本号 Version No.	更改前描述 Description before modification	更改后描述 Description after modification	更改人/日期 Reviser/Date
0	/	First release 初版发行	杨培 2022/6/6
1	/	新增 CH/CZ-TJC4001-1 端子 Added CH/CZ-TJC4001-1 terminal	尹恒 2022/7/7

产品名称 Product name	TJC4001 系列	编号 Document No.	PS4168	版本号 Version No.	1
----------------------	------------	--------------------	--------	--------------------	---

2.适用范围 Scope

本产品规格书适用于浙江合兴电子元件有限公司生产的 WTW/WTB 4.0 阴型 & 阳型电子连接器，产品名称：TJC4001。

This product specification covers the requirement for wire to wire/board 4.0mm pitch Receptacle & Plug connector, which are designed and manufactured by CWB Electronics(ZheJiang) Co.,LTD. P/N: TJC4001

3.产品描述 Product description

TJC14001 系列产品为家电连接器产品，产品部件组成如下：

The TJC4001 series connector designed for home appliances connection. part checklist as following form:

Part name	Part No.	Previous part No.	Description
插簧 Socket contact	CH-TJC4001-**-*	/	AWG26~AWG22
插簧 Socket contact	CH-TJC4001-1-**-*	/	AWG20~AWG16
插针 Pin contact	CZ-TJC4001-**-*	/	AWG26~AWG22
插针 Pin contact	CZ-TJC4001-1-**-*	/	AWG20~AWG16
孔座 Housing	TJC4001*-nY(**-*) TJC4001-2×nY(**-*)	/	PBT+GF UL94V-0
条形连接器插座（面板安装） Receptacle housing(Panel mount)	TJC4001-nARP(**-*)	/	PBT+GF UL94V-0
阳连接器（立式，直插） Header (V, DIP)	TJC4001*-nAD(**-*) TJC4001-2×nAD(**-*)	/	Wafer: PA66+GF UL94V-0 Post: Brass, tin plated

4.相关标准 Related standards

以下参考文件是本规格书的一个组成部份。若本规格书中的要求与产品图纸发生冲突，则产品图中的要求为优先；若本规格书中的要求与参考文件中的要求冲突，则本规格书为优先。

The following documents form a part of this specification. In the event of conflict between the requirements of this specification and the product drawing, the product drawing shall take precedence. In the event of conflict between the requirements of this specification and the referenced documents, this specification shall take precedence.

GB/T 2421	电工电子产品环境试验 第一部分 总则 Testing method for environmental of electrical connectors Class 1: General principles
GB/T 2423	电工电子产品环境试验方法 Testing method for environmental of electrical connectors
GB/T 2424	电工电子产品环境试验导则 Testing method for environmental of electrical connectors
GB/T 5095	电子设备用机电元件基本试验规程及测量方法 Testing procedure/method for components of electric equipment
EIA-364	EIA-364 系列标准 EIA-364 series standards

产品名称 Product name	TJC4001 系列	编号 Document No.	PS4168	版本号 Version No.	1
----------------------	------------	--------------------	--------	--------------------	---



产品规格书

PRODUCT SPECIFICATION

产品符合 RoHS 标准。
The product should comply with RoHS.

5. 参数范围 Parameter ratings:

额定电流 [AC(有效值)/DC] Rated current [AC(rms)/DC]	见《额定电流对照表 Comparison table of rated current》	
适用 PCB 板 Applicable PCB	Panel thickness:0.8mm-2.0mm(WTW) Board thickness:1.6±0.1mm(WTB) Hole diameter: φ 1.65(+0.1/0)mm	
额定电压[AC(有效值)/DC] Rated voltage [AC(rms)/DC]	300V	
使用温度范围 (包含温升) Operating temperature range (include temperature rise)	-25℃~+85℃	
适用线型 (具体适用线型请参考压接规格书) Applicable wires(Please refer to the crimping specification for details)	CH/CZ-TJC4001	Wire size: AWG26~AWG22(0.13mm ~0.33 mm } Insulation diameter: φ 1.3 mm- φ 2.40mm
	CH/CZ-TJC4001-1	Wire size: AWG20~AWG16(0.52mm ~1.31 mm } Insulation diameter: φ 1.7 mm- φ 3.2mm

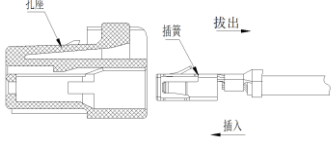
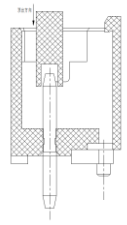
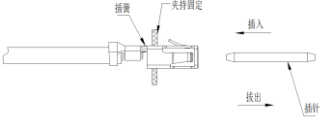
《额定电流对照表 Comparison table of rated current》

Pin 数	Wire size:					
	AWG16	AWG18	AWG20	AWG22	AWG24	AWG26
2	12	10	8	5	4	3
3	11	9	7	5	4	3
4,5,6,8	10	8	6	5	4	3
10,12	9	7	6	5	4	3
14	9	7	6	4.5	4	3

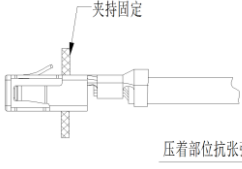
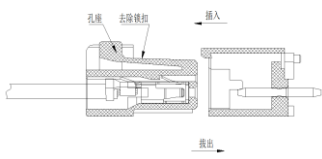
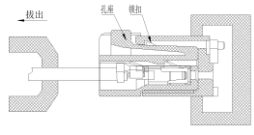
产品名称 Product name	TJC4001 系列	编号 Document No.	PS4168	版本号 Version No.	1
----------------------	------------	--------------------	--------	--------------------	---

6. 产品性能 Performance

6.1 机械性能 Mechanical

序号 No.	项目 Item	测试条件 Test condition	规格 Requirement
6.1.1	外观 Appearance	目测 Checking by eyes 视力: 1.0 以上 Eyesight: > 1.0 照明: (200~300) lx Lamp: (200~300) lx 目测距离: (0.3~0.5) m Space: (0.3~0.5) m GB/T 5095.2, Method 1a	1. 塑料件表面应无明显疤痕、凹陷、开裂及影响使用的变形。 Plastic part: smooth and flat surface without discolor, broken, crack, and distortion, etc. 2. 金属件表面无锈蚀、氧化、无明显的机械损伤及电镀层脱落等缺陷。 Metal part: bright and even surface without rust, oxide, fog and obvious physical damage, etc.
6.1.2	端子插入力与 固定力 Insertion force and retention force for contact	应测量将端子沿轴线方向插入孔座和拔出孔座的力， 测试速度1~5 mm/sec.。 The force of inserting and pulling the contact into and out of the housing along the axis shall be measured (Testing speed: 1~5 mm/sec.)  GB/T 5095.8 Method 15d / EIA-364-29B	插入力: ≤10N 固定力: ≥30N Insertion force: ≤10N Retention force: ≥30N
6.1.3	针的固定力 Post retention force	沿插针轴线方向施加推力，测量将插针从塑件上分离 的力，测试速度 1~5 mm/sec.。 The end of a post shall be pushed in a direction perpendicular to a wafer. The load required to make the post start moving from the wafer shall be measured. (Testing speed: 1~5 mm/sec.)  GB/T 5095.8 Method 15a / EIA-364-29B	20N Min
6.1.4	插簧与插针的 插拔力 Insertion and withdrawal force for pin in the contact	固定连接器和/或测力计，在端子轴线方向将插针插入 和拔出插簧，测试速度不大于 25 mm/min。 Insert the pin contact into and pull out the socket contact in the direction of the terminal axis (Testing speed: <25 mm/min.)  GB/T 5095.7 Method 13b / EIA-364-13B	插入力: ≤9.8N 拔出力: ≥0.2N Insertion force: ≤9.8N Retention force: ≥0.2N

产品名称 Product name	TJC4001 系列	编号 Document No.	PS4168	版本号 Version No.	1
----------------------	------------	--------------------	--------	--------------------	---

6.1.5	<p>压着部位抗张强度 Crimp tensile strength</p>	<p>在已压接端子的头部和导线上施加拉力，并测量将导线从端子拉出或导线断裂所需的力，测试速度 1~5 mm/sec。 Pulling load shall be applied to a correctly crimped contact and a wire. The load required to pull the wire out of the contact or break the wire shall be measured. (Testing speed: 1~5 mm/sec.)</p>  <p>GB/T5095.8 Method 16d / EIA-364-08B</p>	<p>压着式连接器 Crimp Conn. AWG 26: 15N Min. AWG 24: 30N Min. AWG 22: 40N Min. AWG 20: 65N Min. AWG 18: 80N Min. AWG 16: 95N Min.</p>																																													
6.1.6	<p>成品插入力与拔出力 Insertion force and withdrawal force</p>	<p>将装有已压接端子的孔座与阳连接器做插入和拔出，测量首次插入力、首次拔出力及第30次拔出力，测试速度1~5 mm/sec。 A housing with crimped/IDC contacts and a header shall be mated and unmated on the mating axis. Initial insertion and withdrawal forces and withdrawal force at 30th shall be measured. (Testing speed: 1~5 mm/sec.)</p>  <p>GB/T 5095.7 Method 13b / EIA-364-13B</p>	<table border="1"> <thead> <tr> <th rowspan="2">No. of poles 极数</th> <th>插入力（最大值） Insertion (Max.)</th> <th colspan="2">拔出力（最小值） Withdrawal (Min.)</th> </tr> <tr> <th>初次 1st.</th> <th>初次 1st.</th> <th>第三十次 30th</th> </tr> </thead> <tbody> <tr><td>2</td><td>15</td><td>1.0</td><td>1.0</td></tr> <tr><td>3</td><td>20</td><td>1.5</td><td>1.5</td></tr> <tr><td>4</td><td>25</td><td>2.0</td><td>2.0</td></tr> <tr><td>5</td><td>30</td><td>2.5</td><td>2.5</td></tr> <tr><td>6</td><td>35</td><td>3.0</td><td>3.0</td></tr> <tr><td>8</td><td>45</td><td>4.0</td><td>4.0</td></tr> <tr><td>10</td><td>55</td><td>5.0</td><td>5.0</td></tr> <tr><td>12</td><td>65</td><td>6.0</td><td>6.0</td></tr> <tr><td>14</td><td>75</td><td>7.0</td><td>7.0</td></tr> </tbody> </table>			No. of poles 极数	插入力（最大值） Insertion (Max.)	拔出力（最小值） Withdrawal (Min.)		初次 1st.	初次 1st.	第三十次 30th	2	15	1.0	1.0	3	20	1.5	1.5	4	25	2.0	2.0	5	30	2.5	2.5	6	35	3.0	3.0	8	45	4.0	4.0	10	55	5.0	5.0	12	65	6.0	6.0	14	75	7.0	7.0
No. of poles 极数	插入力（最大值） Insertion (Max.)	拔出力（最小值） Withdrawal (Min.)																																														
	初次 1st.	初次 1st.	第三十次 30th																																													
2	15	1.0	1.0																																													
3	20	1.5	1.5																																													
4	25	2.0	2.0																																													
5	30	2.5	2.5																																													
6	35	3.0	3.0																																													
8	45	4.0	4.0																																													
10	55	5.0	5.0																																													
12	65	6.0	6.0																																													
14	75	7.0	7.0																																													
6.1.7	<p>机械振动 Vibration</p>	<p>插入连接器，串联在直流电源上，电流100mA；并模拟正常工作状态：振频为（10~55~10）Hz，每个循环时间为1分钟，振幅1.52mm。沿XYZ三轴正反方向各循环2小时 Mate connectors subjected them to following vibration conditions, for a period of 2 hours in each of 3 mutually perpendicular axes, 100 mA current shall be applied. Frequency: (10~55~10)Hz/min. Cycling time: 1 min. Amplitude: 1.52mm. GB/T 5095.4 Method 6d / EIA-364-28D</p>	<p>外观：无损伤（参照6.1.1） Appearance: no damage.(refer to 6.1.1) 接触电阻：20mΩ Max. Contact resistance: 20mΩ Max. 电流中断时间：1μsec Max Current interruption: 1μsec Max</p>																																													
6.1.8	<p>机械寿命 Durability</p>	<p>以 50mm/min 速度插拔 30 次 30cycles for mating and unmating test at the speed of 50mm/min GB/T 5095.5 Method 9a / EIA-364-09C</p>	<p>外观：无损伤（参照6.1.1） Appearance: no damage.(refer to 6.1.1) 接触电阻：20mΩ Max. Contact resistance: 20mΩ Max.</p>																																													
6.1.9	<p>锁扣强度 Lock strength</p>	<p>固定连接器和测力计，在连接器轴线方向将配合后的连接器拔出，测试速度1~5 mm/sec.，测量时连接器应无端子或端子不影响锁扣强度的测量结果 Apply axial withdraw force on the connector which without contact or the contacts shall not affect lock strength(Testing speed: 1~5 mm/sec.)</p>  <p>GB/T 5095.8 Method 15f / EIA-364-29B</p>	<p>2P: 15N Min. 3P:30N Min 4P 及以上: 50N Min</p>																																													

产品名称 Product name	TJC4001 系列	编号 Document No.	PS4168	版本号 Version No.	1
----------------------	------------	--------------------	--------	--------------------	---

6.2 电气性能 Electrical

序号 No.	项 目 Item	测试条件 Test condition	规格 Requirement
6.2.1	接触电阻 Contact resistance	插配阴阳连接器后,用小功率电路进行测试 Mate connectors with dry circuit to test contact resistance GB/T 5095.2 Method 2a / EIA-364-23B	10m Ω Max. (Initial) 20m Ω Max. (Final)
6.2.2	绝缘电阻 Insulation resistance	在相邻接触件之间或地线之间,用 500V DC 电压进行测试 Apply a voltage of 500V DC between adjacent contacts and between contacts to ground. GB/T 5095.2 Method 3a / EIA-364-21C	1000 MΩ Min. (Initial) 500 MΩ Min. (Final)
6.2.3	耐电压 Withstand voltage	相邻接触件之间或地线之间施加 1500V AC (有效值),漏电流 1mA 的电压作用,时间 1min. Apply a voltage of 1500V AC (rms) and leakage current of 1mA between adjacent contacts or ground cables for 1 minute. GB/T 5095.2 Method 4a / EIA-364-20B	外观: 无击穿和飞弧现象 Appearance: no breakdown or flashover

6.3 环境性能 Environmental

序号 No.	项 目 Item	测试条件 Test condition	规格 Requirement										
6.3.1	耐高温 Heat resistance	连接器配合后, 于 (85±2) °C 的空气中放置 250 小时, 再回到室温中放置 (1~2) 小时测定 Mated connectors exposed to the condition of (85±2)°C for 250 hours, recovery time (1~2) hours GB/T 5095.6 Method 11i / EIA-364-17B	外观: 无损伤 (参照6.1.1) Appearance: no damage.(refer to 6.1.1) 接触电阻: 20mΩ Max. Contact resistance: 20mΩ Max.										
6.3.2	恒定湿热 Humidity	温度(40±2)°C, 相对湿度(90~95)% 搁置时间 240 小时, 取出恢复 (1~2) 小时后检查. Mated connectors exposed to the condition of temperature (40±2)°C, humidity (90~95)% for 240 hours, recovery time (1~2) hours GB/T 5095.6 Method 11c / EIA-364-31B	外观: 无损伤 (参照6.1.1) Appearance: no damage.(refer to 6.1.1) 接触电阻: 20mΩ Max. Contact resistance: 20mΩ Max. 绝缘电阻: 500 MΩ Min. Insulation resistance: 500 MΩ Min. 耐电压: 1000V Min. Withstand voltage: 1000V Min.										
6.3.3	温度循环 Temperature cycling	把试验样品分别放入高、低温试验箱中, 按下列步骤调试温度: a) 在(-55±2)°C 的恒温条件下放置 0.5 小时; b) 在(85±2)°C 的恒温条件下放置 0.5 小时; 从 a)到 b)为一个循环, 周期温度转换时间应不大于 5 分钟, 共进行 25 个循环,恢复 (1~2) 小时后检查 Mated connectors shall be tested under the following conditions <table border="1" style="margin-left: 20px;"> <thead> <tr> <th>Temperature °C</th> <th>Duration</th> </tr> </thead> <tbody> <tr> <td>1 -55±2</td> <td>0.5h</td> </tr> <tr> <td>2 Room Temp.</td> <td>5 minutes Max.</td> </tr> <tr> <td>3 +85±2</td> <td>0.5h</td> </tr> <tr> <td>4 Room Temp.</td> <td>5 minutes Max.</td> </tr> </tbody> </table> Step 1 to 4 is one cycle,25 cycles shall be tested, recovery time (1~2) hours GB/T 5095.6 method 11d / EIA-364-32C	Temperature °C	Duration	1 -55±2	0.5h	2 Room Temp.	5 minutes Max.	3 +85±2	0.5h	4 Room Temp.	5 minutes Max.	外观: 无损伤 (参照6.1.1) Appearance: no damage.(refer to 6.1.1) 接触电阻: 20mΩ Max. Contact resistance: 20mΩ Max. 绝缘电阻: 500 MΩ Min. Insulation resistance: 500 MΩ Min. 耐电压: 1000V Min. Withstand voltage: 1000V Min.
Temperature °C	Duration												
1 -55±2	0.5h												
2 Room Temp.	5 minutes Max.												
3 +85±2	0.5h												
4 Room Temp.	5 minutes Max.												

产品名称 Product name	TJC4001 系列	编号 Document No.	PS4168	版本号 Version No.	1
----------------------	------------	--------------------	--------	--------------------	---

6.3.4	盐雾 Salt spray	把试验样品从试验箱顶悬挂下来, 采用浓度为(5±1)%(质量百分比)的氯化钠溶液, 在(35±2)℃温度下连续雾化 48 小时, 试验后用流动的蒸馏水轻轻洗去表面沉积物。在常温常湿条件下恢复 (1~2) 小时 48 hours spray, at temp (35±2)℃, NaCl mist concentration (5±1)%. After test wash parts and put it into room ambient for (1~2) hours GB/T 5095.6 Method 11f /EIA-364-26B	外观: 无损伤(五金件应无露出底金属的严重锈蚀;使用预镀好的型材, 其落料面允许有不影响其性能的轻微腐蚀。) Appearance: no damage (no erosion on material exposed, and plating material, slight erosion on the cutting surface is acceptable) 接触电阻: 20mΩ Max. Contact resistance: 20mΩ Max.
6.3.5	硫化氢气体测试 (H ₂ S gas test)	连接器配合后, 在温度 (40±3) °C、湿度 80±5%、H ₂ S 气体浓度为 3±1ppm 的环境中放置 96 小时 Mated connectors exposed to the condition of temperature (40±3)°C, humidity 80±5%, H ₂ S gas concentration of 3±1ppm for 96 hours	接触电阻: 20mΩ Max. Contact resistance: 20mΩ Max.
6.3.6	可焊性 Solderability	把试验样品需要焊接的部位浸入焊锡炉中, 锡炉温度 (245±3) °C, 时间 (2.5~3.5) 秒 Dip solder tails into the molten solder held at (245±3) °C for (2.5~3.5) seconds EIA-364-52	上锡率≥90%: Solder coverage: ≥90%
6.3.7	耐焊接热 Resistance to soldering heat	耐波峰焊热: 把试验样品需要焊接的部位浸入焊锡炉中, 锡炉温度 (260±5) °C; 时间 (10±0.5) 秒后, 在正常条件下恢复 (1~2) 小时 手工焊接: 温度 (350±10) °C, 时间(1~2) seconds Resistance to wave soldering heat: Dip solder tails into the molten solder held at (260±5) °C for (10 ±0.5) seconds, recovery time (1~2) hours Manual soldering: (350±10)°C for (1~2) seconds	外观: 无损伤 (参照6.1.1) Appearance: no damage.(refer to 6.1.1)

产品名称 Product name	TJC4001 系列	编号 Document No.	PS4168	版本号 Version No.	1
----------------------	------------	--------------------	--------	--------------------	---



产品规格书

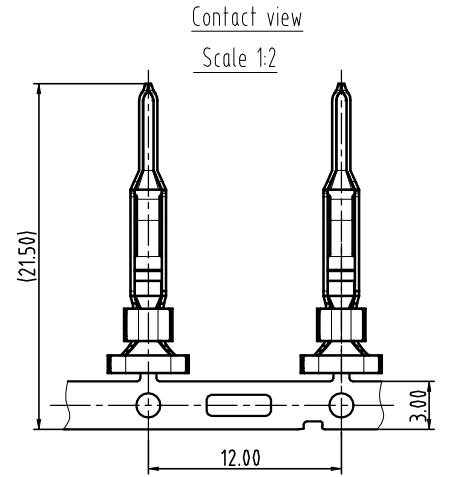
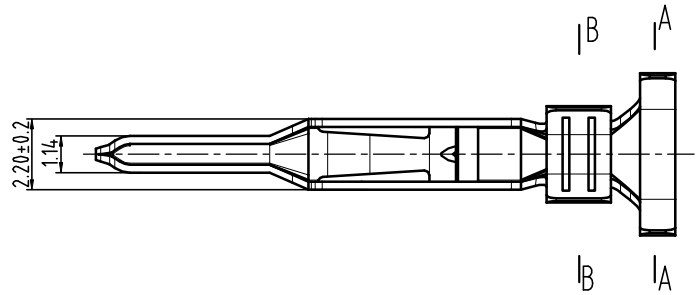
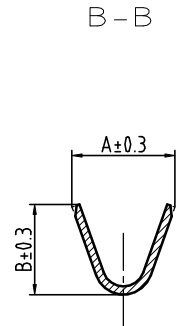
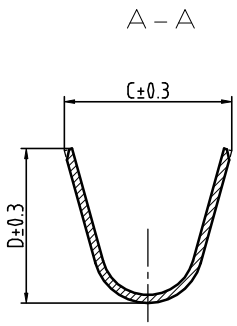
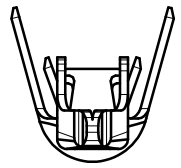
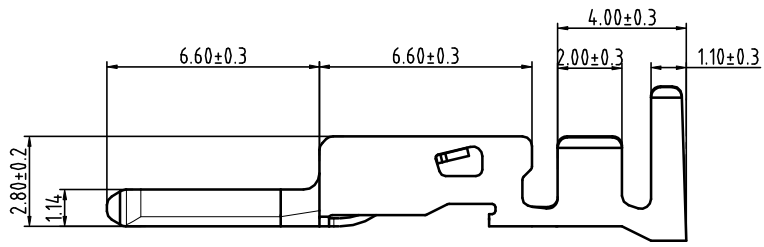
PRODUCT SPECIFICATION

7.测试分组 Test sequences (Samples:5PCS)

测试组 Group number	A	B	C	D	E	F	G	H	I	J	K	L	M	N	O
外观 Appearance	1	1	1	1	1	1,5	1,3	1,5	1,5	1,7	1,7	1,5	1	1	1,3
端子插入力与固定力 Insertion force and retention force for contact	2														
针的固定力 Post retention force		2													
插簧与插针的插拔力 Insertion and withdrawal force for pin in the contac			2												
压着部位抗张强度 Crimp tensile strength				2											
成品插入力与拔出力 Insertion force and withdrawal force					2										
机械振动Vibration						3									
机械寿命 Durability								3							
锁扣强度 Lock strength							2								
接触电阻 Contact resistance						2,4		2,4	2,4	2,4	2,4	2,4	2,4		
绝缘电阻 Inswulation resistance										5	5				
耐电压 Withstand voltage										6	6				
耐高温 Heat resistance									3						
恒定湿热 Humidity										3					
温度循环 Temperature cycling											3				
盐雾 Salt spray												3			
硫化氢气体测试 (H ₂ S gas test)													3		
可焊性 Solderability														2	
耐焊接热 Resistance to soldering heat															2

产品名称 Product name	TJC4001 系列	编号 Document No.	PS4168	版本号 Version No.	1
----------------------	------------	--------------------	--------	--------------------	---

General Tolerance	Dimension	Tolerance	Rev. No	Location	Description	Reviser	Date
	0~3	+0.13					
	3~18	+0.23					
	18~50	+0.35					
	≥50	+0.55					



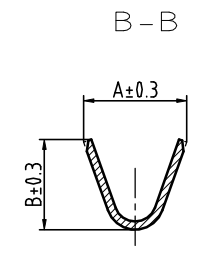
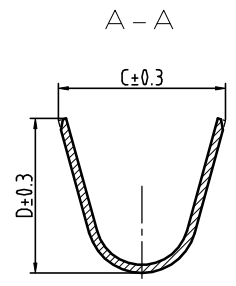
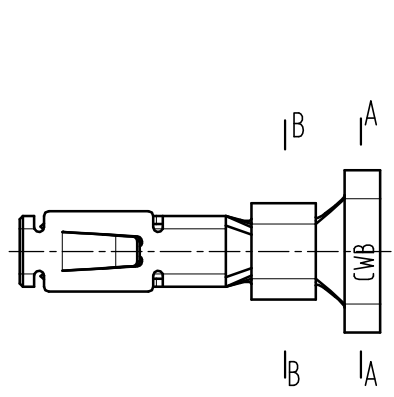
Notes:

- 1. Material: CuNi3SiMg, thickness: 0.25mm
- 2. Surface finish: tin plated
- 3. Matched housing: TJC4001-nARP
- 4. Applicable wires:
 - CZ-TJC4001: AWG26~AWG22
 - CZ-TJC4001-1: AWG20~AWG16
- 5. Compliant to the current RoHS

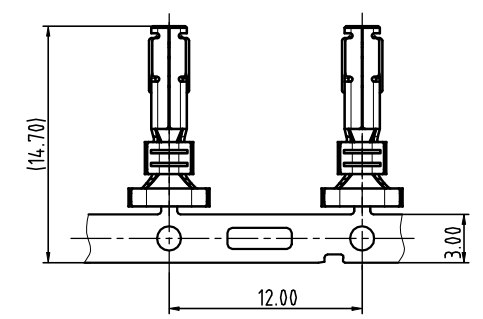
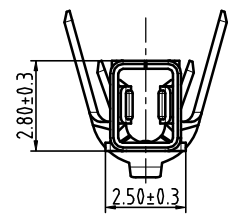
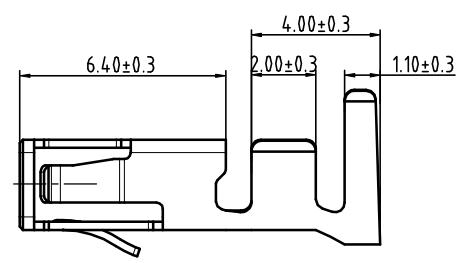
CZ-TJC4001-1	3.0	2.8	5.2	4.8	AWG20 ~16
CZ-TJC4001	2.00	1.85	5.2	4.8	AWG26 ~22
Part No.	A	B	C	D	Applicable Wire

CUSTOMER DRAWING						4.0mm pitch WTW Pin contact
Drawn	Pei.Yang 2022.05.21	Unit	Scale	Size	Edition	Part No.: CZ-TJC4001-**
Checked	Guoying.Wang 2022.05.21	mm	4:1	A4	B1	Previous part No.: /
Approved	Dongxu.Liu 2022.05.21	Sheet No.	1 Of 1			Document No.: CP-DWG-01577
CWB						Specification No.: PS4168

General Tolerance	Dimension	Tolerance	Rev. No	Location	Description	Reviser	Date
	0~3	±0.13					
	3~18	±0.23					
	18~50	±0.35					
	≥50	±0.55					



Contact view
Scale 1:2



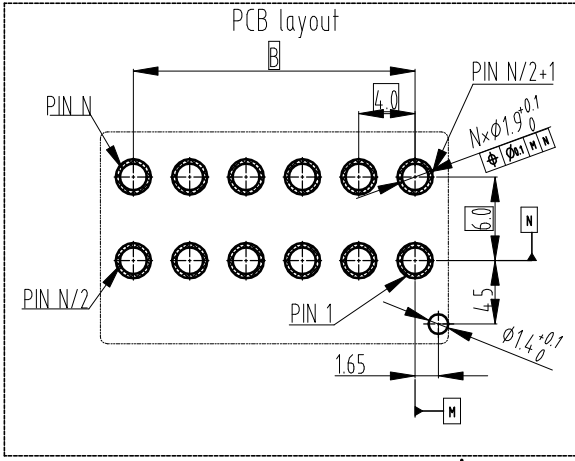
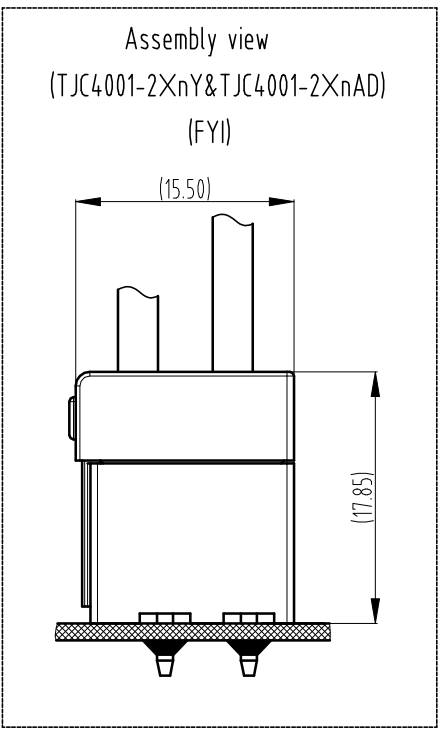
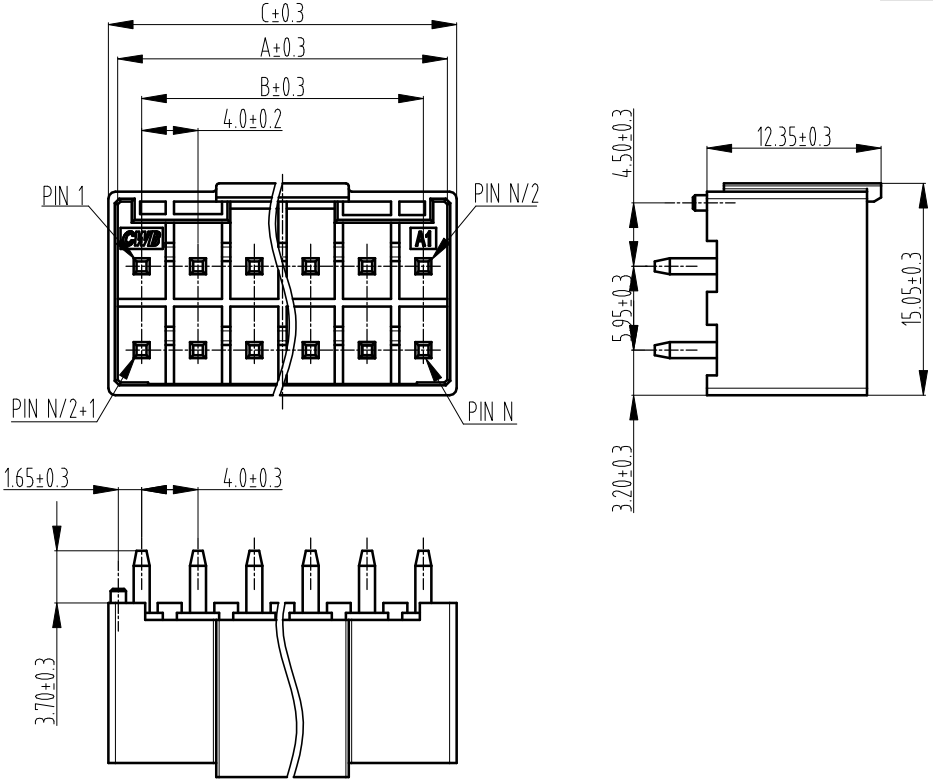
Notes:

1. Material: CuNi3SiMg, thickness: 0.25mm
2. Surface finish: tin plated
3. Matched housing: TJC4001-nY/TJC4001B-nY/TJC4001C-nY
/TJC4001D-nY/TJC4001-2XnY
4. Applicable wires: CH-TJC4001: AWG26~AWG22
CH-TJC4001-1: AWG20~AWG16
5. Compliant to the current RoHS

CH-TJC4001-1	3.2	2.8	5.2	4.8	AWG20 ~16
CH-TJC4001	2.00	1.85	5.2	4.8	AWG26 ~22
Part No.	A	B	C	D	Applicable Wire

CUSTOMER DRAWING						Title:
Drawn	Pei.Yang 2022.05.21	Unit	Scale	Size	Edition	4.0mm pitch WTW/WTB Socket contact
Checked	Guoying.Wang 2022.05.21	mm	4:1	A4	B1	Part No.: CH-TJC4001-**
Approved	Dongxu.Liu 2022.05.21	Sheet No.	1 Of 1			Previous part No.: /
CWB						Document No.: CP-DWG-01576
						Specification No.: PS4168

General Tolerance	Dimension	Tolerance	Rev. No	Location	Description	Reviser	Date
	0~3	±0.13					
	3~18	±0.23					
	18~50	±0.35					
	≥50	±0.55					



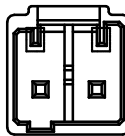
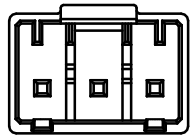
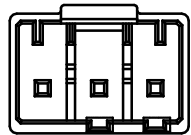
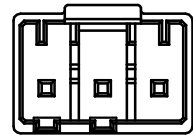
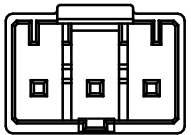
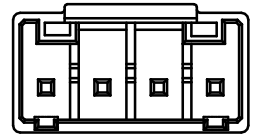
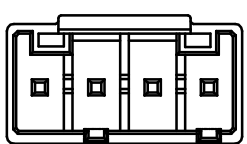
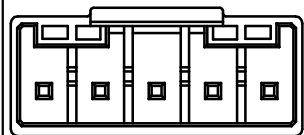
Notes:

- Material:
Wafer: PA66+GF UL94 V-0
Post: brass, tin Plated
- Matched housing: TJC4001-2XnY
- Packaging: packing bag
- Compliant to the current RoHS

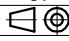
TJC4001-2X7AD	27.4	24.0	28.7
TJC4001-2X6AD	23.4	20.0	24.7
TJC4001-2X5AD	19.4	16.0	20.7
TJC4001-2X4AD	15.4	12.0	16.7
TJC4001-2X3AD	11.4	8.00	12.7
Part No.	A	B	C
	Dimension		

CUSTOMER DRAWING						Title: 4.0mm pitch WTB header	
Drawn	Pei.Yang 2022.05.21	Unit	Scale	Size	Edition	Part No.: TJC4001-2XnAD(**-x)	
Checked	Guoying.Wang 2022.05.21	mm	2.5:1	A4	B0	Previous part No.: /	
Approved	Dongxu.Liu 2022.05.21	Sheet No.	1 of 1		Document No.: CP-DWG-01579		Specification No.: PS4168
CWB							

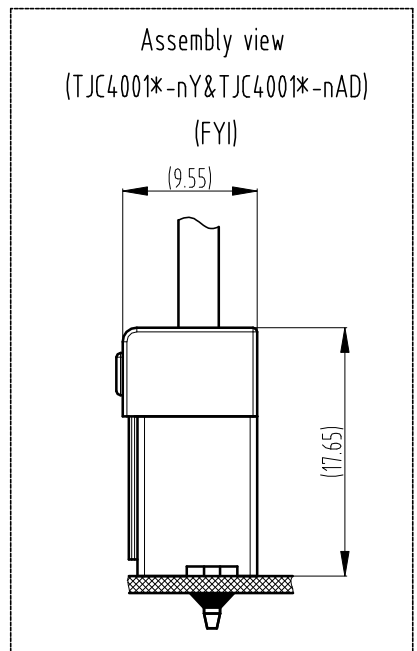
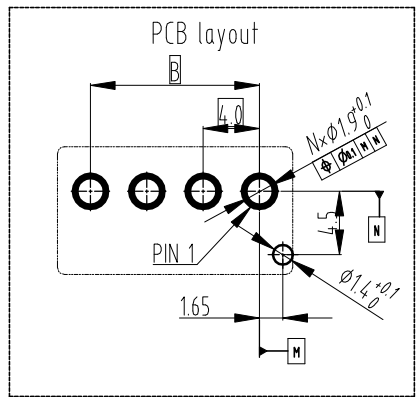
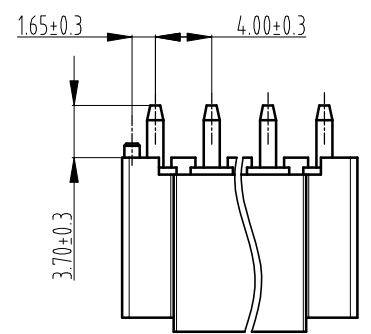
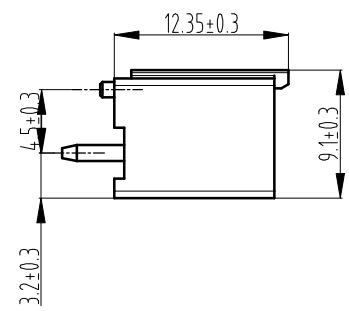
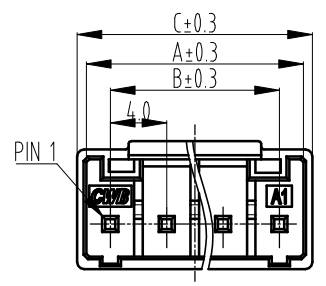
General Tolerance	Dimension	Tolerance	Rev. No	Location	Description	Reviser	Date
	0~3	±0.13					
	3~18	±0.23					
	18~50	±0.35					
	≥50	±0.55					

	TYPE A	TYPE B	TYPE C	TYPE D
2P				
3P				
4P				
5P				

TYPE D	TJC4001D-4AD			
	TJC4001D-3AD	11.4	8.00	12.7
	TJC4001D-2AD			
TYPE C	TJC4001C-4AD			
	TJC4001C-3AD	11.4	8.00	12.7
	TJC4001C-2AD			
TYPE B	TJC4001B-4AD	15.4	12.0	16.7
	TJC4001B-3AD	11.4	8.00	12.7
	TJC4001B-2AD			
TYPE A	TJC4001-5AD	19.4	16.0	20.7
	TJC4001-4AD	15.4	12.0	16.7
	TJC4001-3AD	11.4	8.00	12.7
	TJC4001-2AD	7.4	4.00	8.7
Key No.	Part No.	A	B	C
		Dimension		

CUSTOMER DRAWING						Title: 4.0mm pitch WTB header	
Drawn	Pei.Yang 2022.05.21	Unit	Scale	Size	Edition	Part No.: TJC4001*-nAD(**-*)	
Checked	Guoying.Wang 2022.05.21	mm	2.5:1	A4	B0	Previous part No.: /	
Approved	Dongxu.Liu 2022.05.21	Sheet No.	1 Of 2			Document No.: CP-DWG-01578	
CWB						Specification No.: PS4168	

General Tolerance	Dimension	Tolerance	Rev. No	Location	Description	Reviser	Date
	0~3	±0.13					
	3~18	±0.23					
	18~50	±0.35					
	≥50	±0.55					



Notes:

1.Material:

Wafer: PA66+GF UL94 V-0

Post: brass, tin Plated

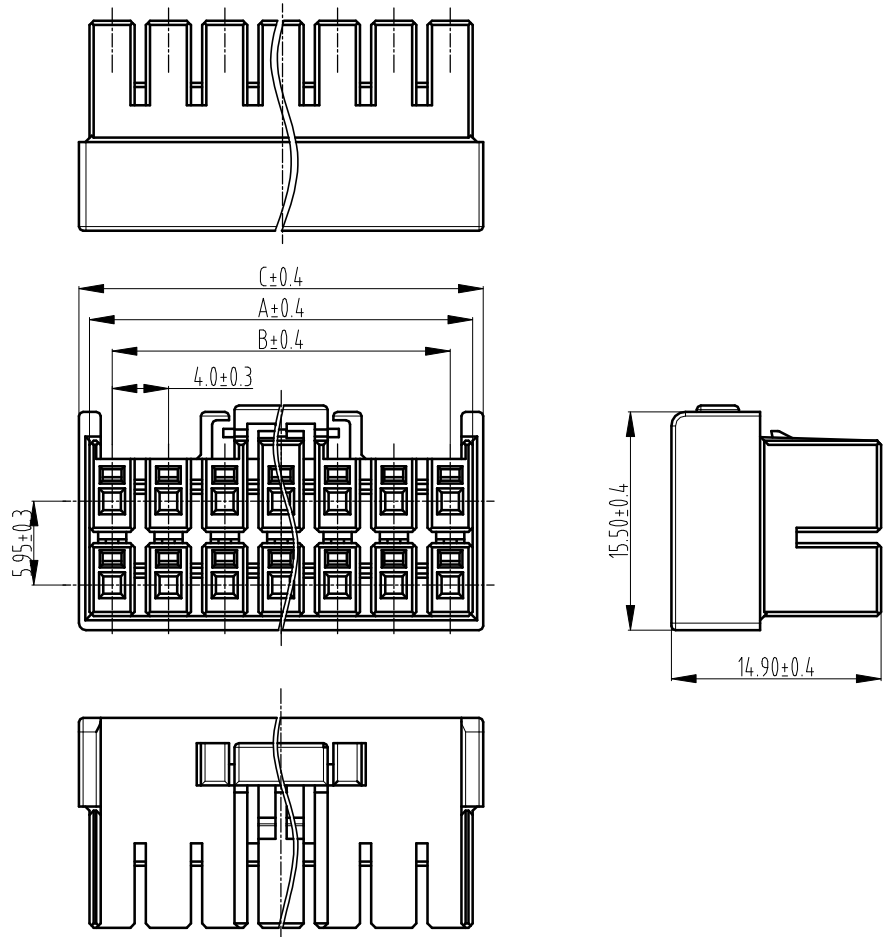
2.Matched housing: TJC4001-nY/TJC4001B-nY/TJC4001C-nY/TJC4001D-nY

3.Packaging: packing bag

4.Compliant to the current RoHS

CUSTOMER DRAWING						Title: 4.0mm pitch WTB header	
Drawn	Pei.Yang 2022.05.21	Unit	Scale	Size	Edition	Part No.: TJC4001*-nAD(**-*)	
Checked	Guoying.Wang 2022.05.21	mm	2.5:1	A4	B0	Previous part No.: /	
Approved	Dongxu.Liu 2022.05.21	Sheet No.	2 Of 2			Document No.: CP-DWG-01578	
CWB						Specification No.: PS4168	

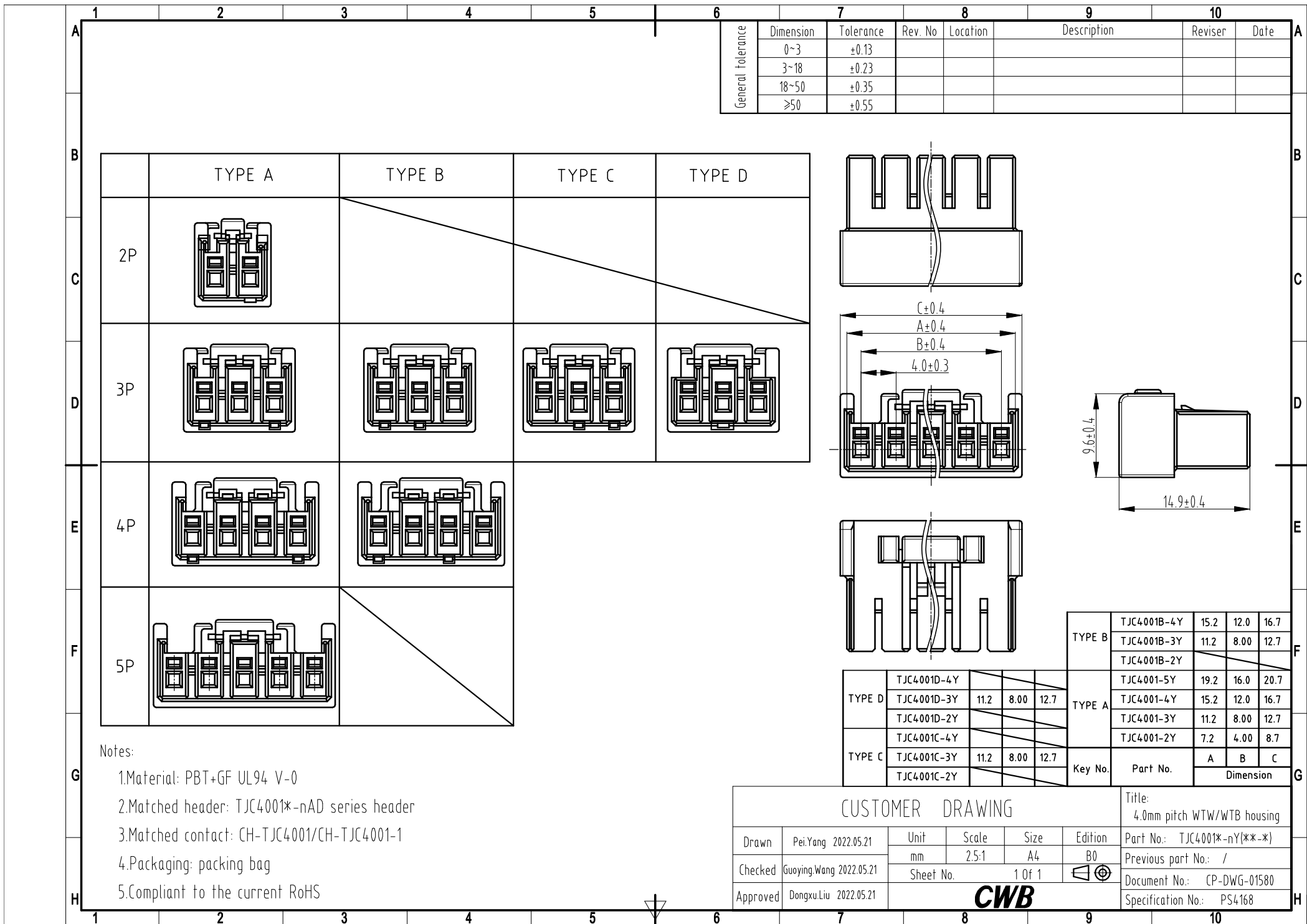
General Tolerance	Dimension	Tolerance	Rev. No	Location	Description	Reviser	Date
	0~3	±0.13					
	3~18	±0.23					
	18~50	±0.35					
	≥50	±0.55					

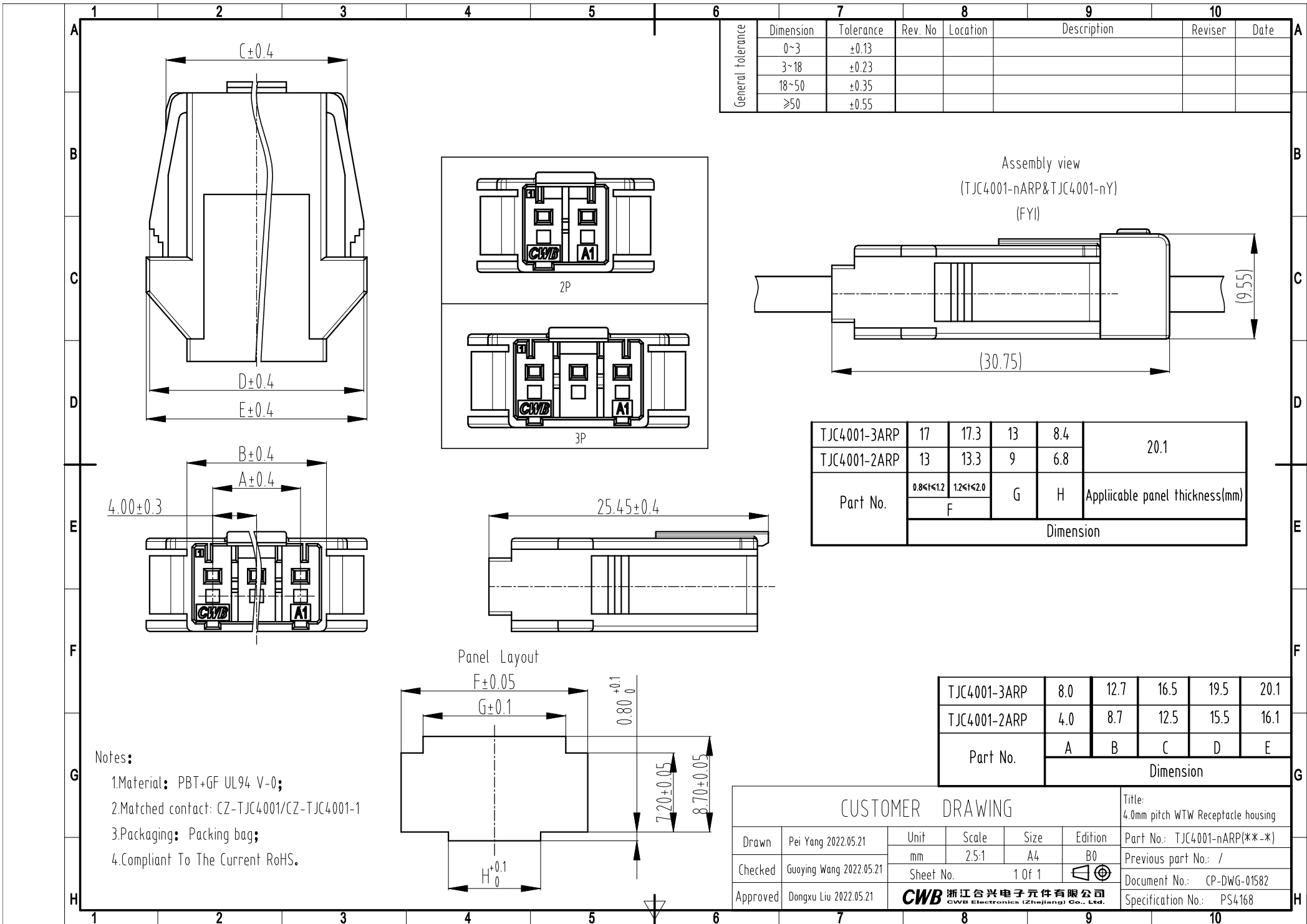


TJC4001-2X7Y	27.2	24.0	28.7
TJC4001-2X6Y	23.2	20.0	24.7
TJC4001-2X5Y	19.2	16.0	20.7
TJC4001-2X4Y	15.2	12.0	16.7
TJC4001-2X3Y	11.2	8.00	12.7
Part No.	A	B	C
	Dimension		

- Notes:
- 1.Material: PBT+GF UL94 V-0
 - 2.Matched header: TJC4001-2XnAD series header
 - 3.Matched contact: CH-TJC4001/CH-TJC4001-1
 - 4.Packaging: packing bag
 - 5.Compliant to the current RoHS

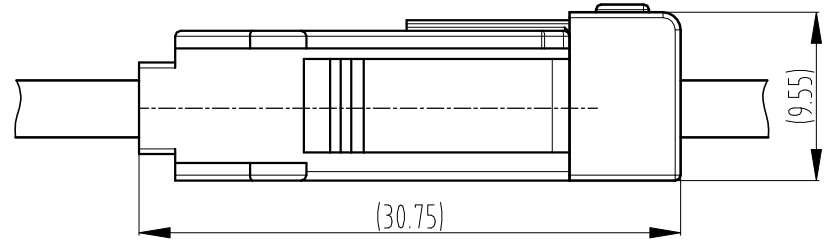
CUSTOMER DRAWING						Title: 4.0mm pitch WTW/WTB housing	
Drawn	Pei.Yang 2022.05.21	Unit	Scale	Size	Edition	Part No.: TJC4001-2XnY(**-*)	
Checked	Guoying.Wang 2022.05.21	mm	2.5:1	A4	B0	Previous part No.: /	
Approved	Dongxu.Liu 2022.05.21	Sheet No.	1 of 1			Document No.: CP-DWG-01581	
CWB						Specification No.: PS4168	





General Tolerance	Dimension	Tolerance	Rev. No	Location	Description	Reviser	Date
	0~3	±0.13					
	3~18	±0.23					
	18~50	±0.35					
≥50	±0.55						

Assembly view
(TJC4001-nARP&TJC4001-nY)
(FYI)



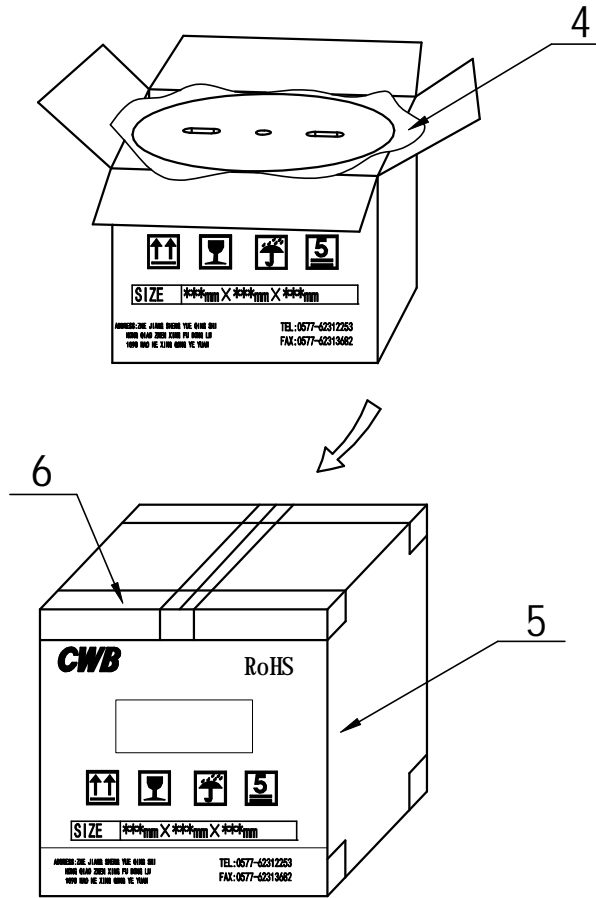
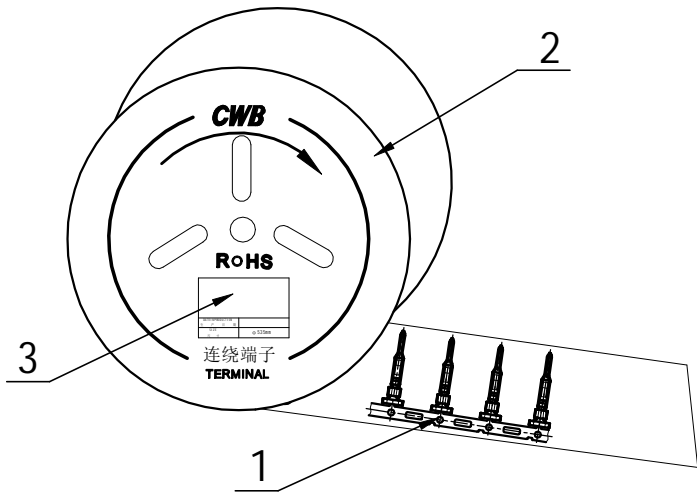
TJC4001-3ARP	17	17.3	13	8.4	20.1
TJC4001-2ARP	13	13.3	9	6.8	
Part No.	0.8\leq1.2	1.2\leq2.0	G	H	Applicable panel thickness(mm)
	F		Dimension		

- Notes:
- 1.Material: PBT+GF UL94 V-0;
 - 2.Matched contact: CZ-TJC4001/CZ-TJC4001-1
 - 3.Packaging: Packing bag;
 - 4.Compliant To The Current RoHS.

TJC4001-3ARP	8.0	12.7	16.5	19.5	20.1
TJC4001-2ARP	4.0	8.7	12.5	15.5	16.1
Part No.	A	B	C	D	E
	Dimension				

CUSTOMER DRAWING						Title: 4.0mm pitch WTW Receptacle housing
Drawn	Pei Yang 2022.05.21	Unit	Scale	Size	Edition	Part No.: TJC4001-nARP(**-*)
Checked	Guoying Wang 2022.05.21	mm	2.5:1	A4	B0	Previous part No.: /
		Sheet No.	1 Of 1			Document No.: CP-DWG-01582
Approved	Dongxu Liu 2022.05.21	CWB 浙江合兴电子元件有限公司 CWB Electronics (Zhejiang) Co., Ltd.			Specification No.: PS4168	

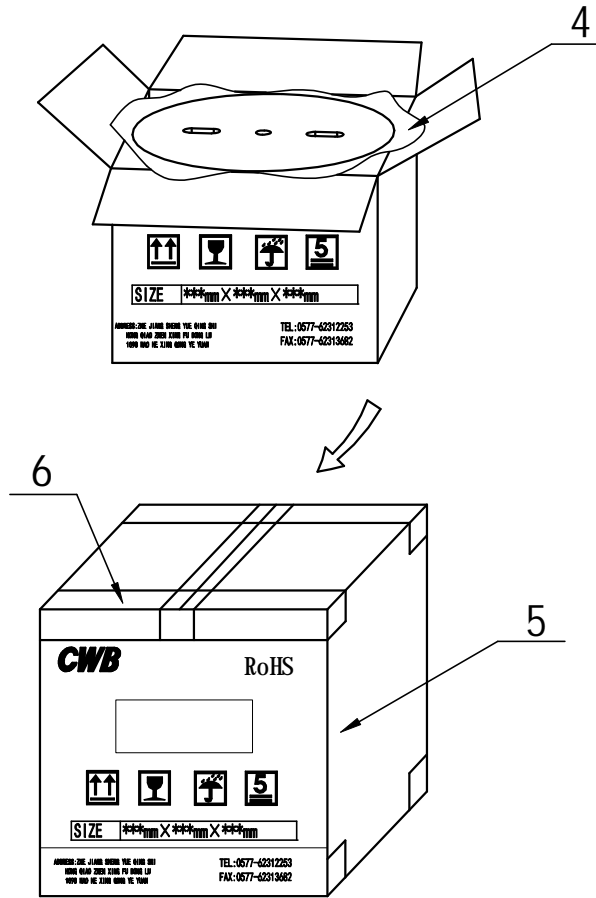
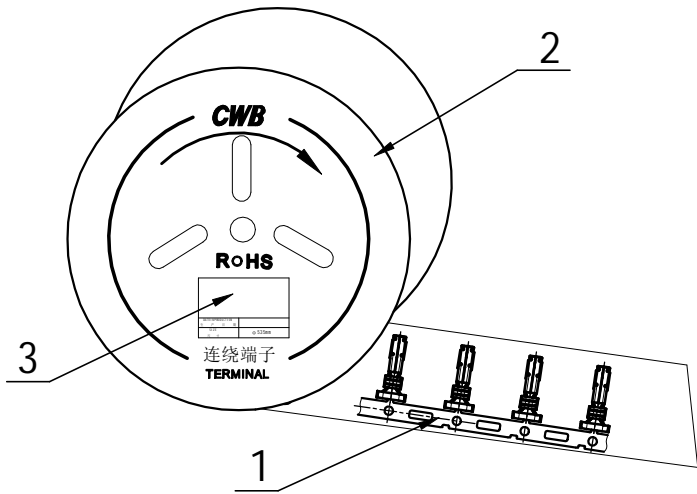
General Tolerance	Dimension	Tolerance	Rev. No	Location	Description	Reviser	Date
	0~3	±0.13					
	>3~18	±0.23					
	>18~50	±0.35					
	>50	±0.55					



6	Gummed tape	
5	Packing box	CZ-TJK4001 5Mges/box CZ-TJK4001-1 3Mges/box
4	Packing bag	
3	Certificate	
2	Reel	CZ-TJK4001 5Mges/reel CZ-TJK4001-1 3Mges/reel
1	CZ-TJC4001/CZ-TJC4001-1	
Number	Designation	Remarks

CUSTOMER DRAWING						Title: Packaging specification	
Drawn	Pei.Yang 2022.05.21	Unit	Scale	Size	Edition	Part No.: CZ-TJC4001-**	
Checked	Guoying.Wang 2022.05.21	mm	/	A4	B0	Previous part No.: /	
Approved	Dongxu.Liu 2022.05.21	Sheet No. 1 of 1				Document No.: BZ-DWG-00853	
						Specification No.: PS4168	

General Tolerance	Dimension	Tolerance	Rev. No	Location	Description	Reviser	Date
	0~3	±0.13					
	>3~18	±0.23					
	>18~50	±0.35					
	>50	±0.55					



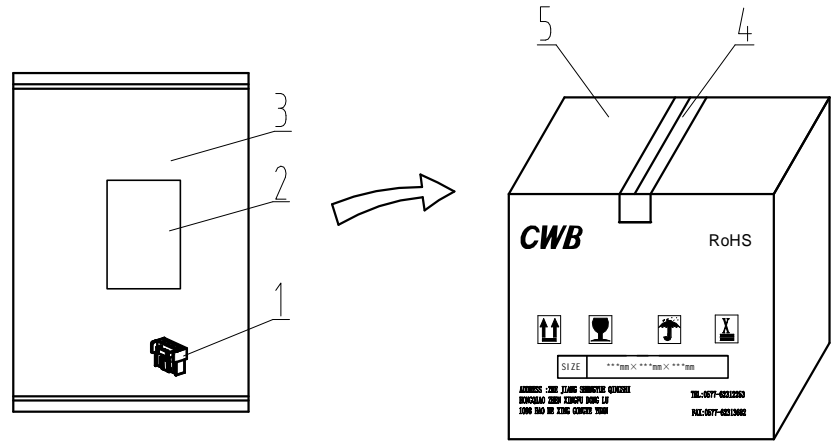
6	Gummed tape	
5	Packing box	CH-TJK4001 50pcs/box CH-TJK4001-1 300pcs/box
4	Packing bag	
3	Certificate	
2	Reel	CH-TJK4001-1 50pcs/reel CH-TJK4001 300pcs/reel
1	CH-TJC4001/CH-TJC4001-1	
Number	Designation	Remarks

CUSTOMER DRAWING						Title: Packaging specification	
Drawn	Pei.Yang 2022.05.21	Unit	Scale	Size	Edition	Part No.: CH-TJC4001-**	
Checked	Guoying.Wang 2022.05.21	mm	/	A4	B0	Previous part No.: /	
Approved	Dongxu.Liu 2022.05.21	Sheet No. 1 of 1				Document No.: BZ-DWG-00852	
						Specification No.: PS4168	

General tolerance	Dimension	Tolerance	Rev. No	Location	Description	Reviser	Date
	0~3	±0.13					
	3~18	±0.23					
	18~50	±0.35					
	50~120	±0.55					

Packing bag

Packing box



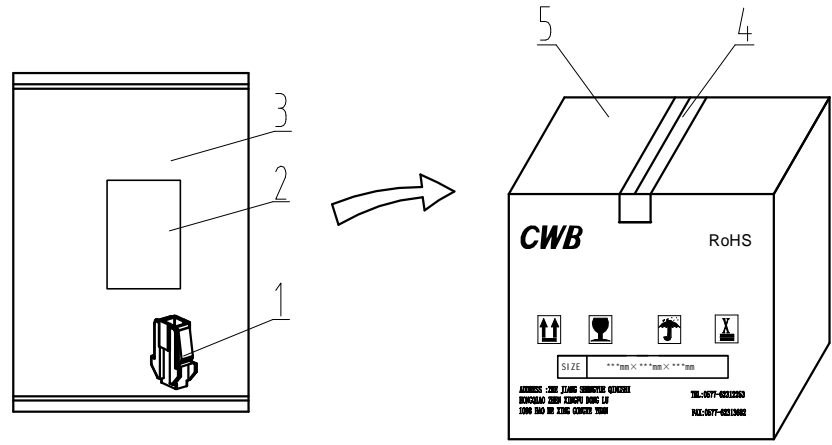
Number	Designation	Part No.	Pcs/ bag	Remarks
5	Packing box	TJC4001-2X7Y	200	
4	Gummed tape	TJC4001-2X6Y	200	
3	Packing bag	TJC4001-2X5Y	300	
2	Certificate	TJC4001-2X4Y	300	
1	TJC4001*-nY/TJC4001-2XnY	TJC4001-5Y	500	
		TJC4001*-4Y	500	
		TJC4001*-3Y	1000	
		TJC4001-2Y	1000	

CUSTOMER DRAWING						Title: Packaging specification	
Drawn	Pei.Yang 2022.05.21	Unit	Scale	Size	Edition	Part No: TJC4001*-nY/TJC4001-2XnY[**-*]	
Checked	Guoying.Wang 2022.05.21	mm	/	A4	B0	Previous part No.: /	
Approved	Dongxu.Liu 2022.05.21	Sheet No.		1 of 1	Document No.: BZ-DWG-00855		
CWB						Specification No.: PS4168	

General tolerance	Dimension	Tolerance	Rev. No	Location	Description	Reviser	Date
	0~3	±0.13					
	3~18	±0.23					
	18~50	±0.35					
	50~120	±0.55					

Packing bag

Packing box



Number	Designation	Part No.	Pcs/ bag	Remarks
5	Packing box			
4	Gummed tape			
3	Packing bag			
2	Certificate	TJC4001-3ARP	500	
1	TJC4001-nARP	TJC4001-2ARP	500	

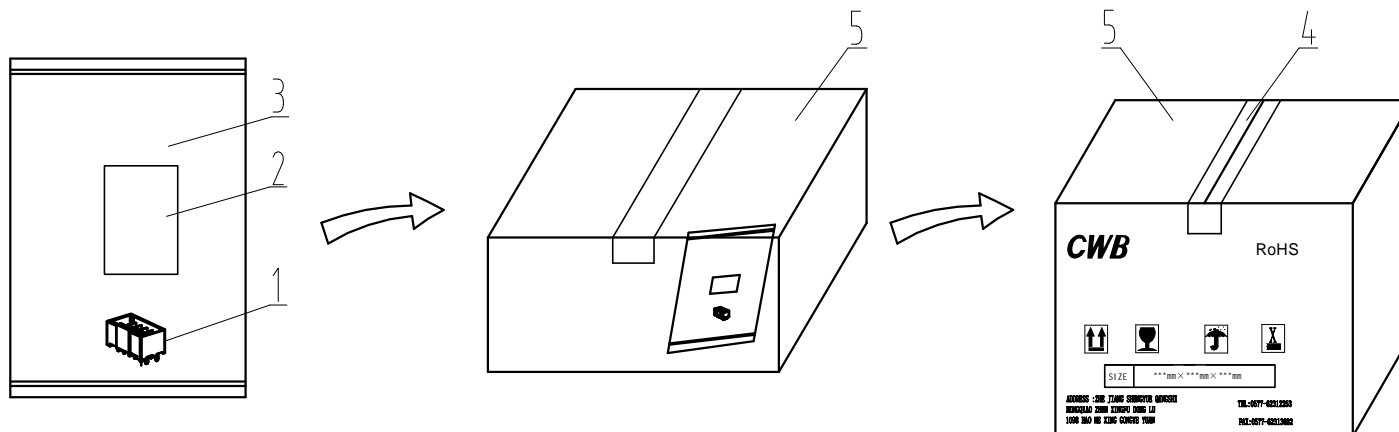
CUSTOMER DRAWING						Title: Packaging specification	
Drawn	Pei.Yang 2022.05.21	Unit	Scale	Size	Edition	Part No.: TJC4001-nARP(**-*)	
Checked	Guoying.Wang 2022.05.21	mm	/	A4	B0	Previous part No.: /	
Approved	Dongxu.Liu 2022.05.21	Sheet No.		1 of 1	Document No.: BZ-DWG-00856		
CWB						Specification No.: PS4168	

General tolerance	Dimension	Tolerance	Rev. No	Location	Description	Reviser	Date
	0~3	±0.13					
	3~18	±0.23					
	18~50	±0.35					
	50~120	±0.55					

Packing bag

Inner box

Packing box



		TJC4001-2X7AD	200	
		TJC4001-2X6AD	200	
		TJC4001-2X5AD	300	
5	Packing box	TJC4001-2X4AD	300	
4	Gummed tape	TJC4001-2X3AD	300	
3	Packing bag	TJC4001-5AD	500	
2	Certificate	TJC4001*-4AD	500	
		TJC4001*-3AD	1000	
1	TJC4001*-nAD/TJC4001-2XnAD	TJC4001-2AD	1000	
Number	Designation	Part No.	Pcs/ bag	Remarks

CUSTOMER DRAWING						Title: Packaging specification	
Drawn	Pei.Yang 2022.05.21	Unit	Scale	Size	Edition	Part No.: TJC4001*-nAD/TJC4001*-2xAD(*-*-*X)	
Checked	Guoying.Wang 2022.05.21	mm	/	A4	B0	Previous part No.: /	
Approved	Dongxu.Liu 2022..05.21	Sheet No.		1 of 1	Document No.: BZ-DWG-00854		
CWB						Specification No.: PS4168	

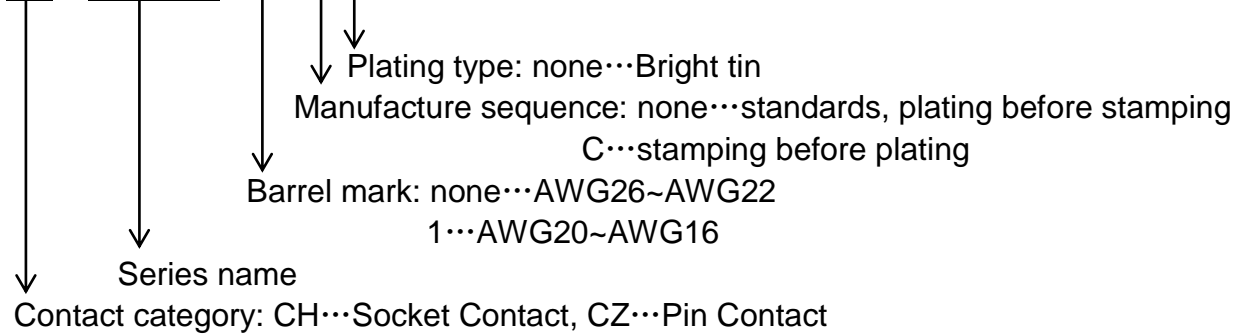
TJC4001 系列命名规则

TJC4001 series naming conventions

1. Pin contact/ Socket contact

CH-TJC4001-*-* , CZ-TJC4001-*-*

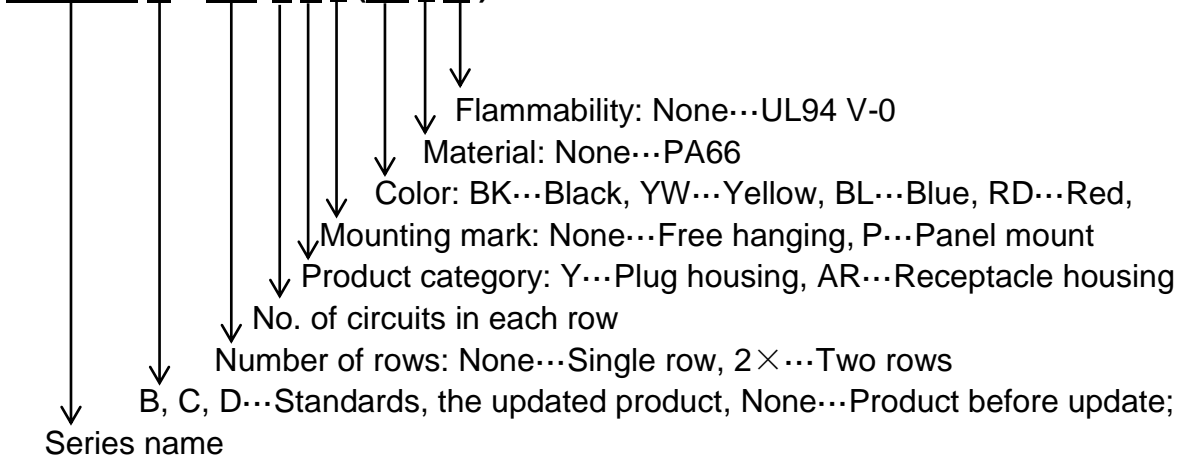
CH - TJC4001 - * - * *



2. Housing/ Receptacle housing

TJC4001-nY (**-*) , TJC4001B-nY (**-*) , TJC4001C-nY (**-*) , TJC4001D-nY (**-*) ,
TJC4001-2×nY (**-*) , TJC4001-nARP(**-*)

TJC4001 B - 2× n Y * (BL * - *)



3. Header

TJC4001-nAD(**-*), TJC4001B-nAD(**-*), TJC4001C-nAD(**-*), TJC4001D-nAD(**-*),
TJC4001-2×nAD(**-*)

TJC4001 B - 2× n A * * * (BL * - *)

