



产品规格书

PRODUCT SPECIFICATION

标题: TJC3001 系列连接器

Title: TJC3001 Connector

目录

Content

1. 更改履历 Change record
2. 范围 Scope
3. 产品描述 Product description
4. 相关标准 Related standards
5. 参数范围 Parameter ratings
6. 产品性能 Performance
7. 测试分组 Test sequences

| | | |
|---|-------------------------------------|--|
| 中国·浙江省乐清市虹桥镇幸福东路 1098 号 合兴工业园 1098, Xingfu`Road(East), CWB Industrial Zone, Hongqiao, Yueqing, Zhejiang 325608, China Tel: 86-577-61313157 (Research & Development Dept.) Tel: 86-577-62312253 (Sales Dept.) | <u>制定 Edit:</u> 王智彬 2022.8.3 | <u>产品名称 Product name:</u> TJC3001 系列 |
| | <u>审核 Check:</u> 吴吉 2022.8.4 | <u>编号 Document No.:</u> PS4175 |
| | <u>批准 Approval:</u> 刘冬旭 2022.8.4 | <u>版本 Revision:</u> V0 |



产品规格书

PRODUCT SPECIFICATION

1.更改履历 Change record

| 版本号 Version No. | 更改前描述 Description before modification | 更改后描述 Description after modification | 更改人/日期 Reviser/Date |
|--------------------|--|---|--------------------------------------|
| V0 | / | 首版发布 First release | 王智彬 2022/8/3 Zhibin.Wang 2022/8/3 |
| | | | |
| | | | |
| | | | |
| | | | |

| | | | | | |
|----------------------|------------|--------------------|--------|--------------------|----|
| 产品名称 Product name | TJC3001 系列 | 编号 Document No. | PS4175 | 版本号 Version No. | V0 |
|----------------------|------------|--------------------|--------|--------------------|----|



产品规格书

PRODUCT SPECIFICATION

2.适用范围 Scope

本产品规格书适用于浙江合兴电子元件有限公司生产的 WTW 3.0 阴型 & 阳型电子连接器，产品名称：TJC3001。

This product specification covers the requirement for wire to wire 3.0mm pitch receptacle & plug connector, which are designed and manufactured by CWB Electronics(ZheJiang) Co.,LTD. P/N: TJC3001.

3.产品描述 Product description

TJC3001 系列产品为家电连接器产品，产品部件组成如下：

The TJC3001 series connector designed for home appliances connection. part checklist as following form:

| 零件名称 Part name | 规格型号 Part No. | 曾用规格型号 Previous part No. | 描述 Description |
|---|---------------------|-----------------------------|-------------------|
| 插簧 Socket contact | CH-TJC3001-**-* | TJC3001 插簧 | AWG#20~AWG#18 |
| 插簧 Socket contact | CH-TJC3001-1-**-* | TJC3001 插簧 A | AWG#24~AWG#22 |
| 插针 Pin contact | CZ-TJC3001-**-* | TJC3002 插针 | AWG#24~AWG#22 |
| 插针 Pin contact | CZ-TJC3001-1-**-* | TJC3002 插针 B | AWG#20~AWG#18 |
| 孔座 Plug housing | TJC3001-2×nY(**-*) | TJC3001-nY | PA66 UL94V-0 |
| 针座（面板安装） Receptacle housing(Panel mount) | TJC3001-2×nAR(**-*) | TJC3002-nA | PA66 UL94V-0 |
| 针座（自由悬挂） Receptacle housing(Free hanging) | TJC3001-2×nAR(**-*) | TJC3002-nA-1 | PA66 UL94V-0 |
| 针座（自由悬挂） Receptacle housing(Free hanging) | TJC3001-2×3AR(**-*) | TJC3002-6A-2 | PA66 UL94V-0 |

| | | | | | |
|----------------------|------------|--------------------|--------|--------------------|----|
| 产品名称 Product name | TJC3001 系列 | 编号 Document No. | PS4175 | 版本号 Version No. | V0 |
|----------------------|------------|--------------------|--------|--------------------|----|



产品规格书

PRODUCT SPECIFICATION

4. 相关标准 Related standards

以下参考文件是本规格书的一个组成部份。若本规格书中的要求与产品图纸发生冲突，以产品图中的要求为优先；若本规格书中的要求与参考文件中的要求冲突，以本规格书要求为优先。

The following documents form a part of this specification. In the event of conflict between the requirements of this specification and the product drawing, the product drawing shall take precedence. In the event of conflict between the requirements of this specification and the referenced documents, this specification shall take precedence.

- GB/T 2421 环境试验 概述和指南
Environmental testing — General and guidance
- GB/T 2423 环境试验 试验方法
Environmental testing — Test methods
- GB/T 2424 环境试验 支持文件及导则
Environmental testing — Supporting documentation and guidance
- GB/T 5095 电子设备用机电元件基本试验规程及测量方法
Electromrchanical components for electronic equipment Basic testing procedures and measuring methods
- EIA-364 EIA-364 系列标准
EIA-364 series standards
- IPC EIA IPC JEDEC J STD 002E 连接器 / 插座终端可焊性测试方法
Solderabilith Tests for Component Leads, Terminations, Lugs, Terminals and Wires

产品符合 RoHS 标准。

The product should comply with RoHS.

5. 参数范围 Parameter ratings:

| | |
|---|---|
| 额定电流 [AC(有效值)/DC] Rated current [AC(rms)/DC] | AWG#18: 3A Max. |
| 适用 PCB 板 Applicable PCB | Board thickness: 1.6 mm Hole diameter: $\phi 1.0(+0.1/-0)$ mm |
| 额定电压[AC(有效值)/DC] Rated voltage [AC(rms)/DC] | 250 V |
| 使用温度范围（包含温升） Operating temperature range (include temperature rise) | -25 °C ~ +85 °C |
| 适用线型（具体适用线型请参考压接规格书） Applicable wires (Please refer to the crimping specification for details) | Wire size: AWG#24~AWG#18 (0.2 mm ² -0.82 mm ²) Insulation diameter: $\phi 1.4$ mm- $\phi 2.05$ mm （压接参数由压接厂家自行定义） （The crimping parameters comply with the requirements of the crimping manufacturer） |

| | | | | | |
|----------------------|------------|--------------------|--------|--------------------|----|
| 产品名称 Product name | TJC3001 系列 | 编号 Document No. | PS4175 | 版本号 Version No. | V0 |
|----------------------|------------|--------------------|--------|--------------------|----|

6. 产品性能 Performance

6.1 机械性能 Mechanical

| 序号 No. | 项 目 Item | 测试条件 Test condition | 规 格 Requirement | |
|--------|--|---|---|--------------------------------------|
| 6.1.1 | 外观 Appearance | 目测 Checking by eyes 视力: 1.0 以上 Eyesight: > 1.0 照明: (200~300) lx Lamp: (200~300) lx 目测距离: (0.3~0.5) m Space: (0.3~0.5) m GB/T 5095.2 Method 1a | 1. 塑料件表面应无明显疤痕、凹陷、开裂及影响使用的变形。 Plastic part: smooth and flat surface without discolor, broken, crack, and distortion, etc. 2. 金属件表面无锈蚀、氧化、无明显的机械损伤及电镀层脱落等缺陷。 Metal part: bright and even surface without rust, oxide, fog and obvious physical damage, etc. | |
| 6.1.2 | 端子插入力与固定力 Insertion force and retention force for contact | 应测量将端子沿轴线方向插入孔座和拔出孔座的力, 测试速度不大于25 mm/min.。 The force of inserting and pulling the contact into and out of the housing along the axis shall be measured (Testing speed: <25 mm/min.) GB/T 5095.8 Method 15d / EIA-364-29B | 插入力 (最大值) Insertion force (Max.) | 固定力 (最小值) Retention force (Min.) |
| | | | 15N | 15N |
| 6.1.3 | 针的固定力 Post retention force | 沿插针轴线方向施加推力, 测量将插针从塑件上分离的力, 测试速度不大于 25 mm/min.。 The end of a post shall be pushed in a direction perpendicular to a wafer. The load required to make the post start moving from the wafer shall be measured. (Testing speed: <25 mm/min.) GB/T 5095.8 Method 15a / EIA-364-29B | 15N Min. | |
| 6.1.4 | 插簧与插针的插拔力 Insertion and withdrawal force for pin in the contact | 固定连接器和/或测力计, 在端子轴线方向将插针插入和拔出插簧, 测试速度不大于 25 mm/min.。 Insert the pin contact into and pull out the socket contact in the direction of the terminal axis (Testing speed: <25 mm/min.) GB/T 5095.7 Method 13b / EIA-364-13B | 插入力 (最大值) Insertion force (Max.) | 拔出力 (最小值) Withdrawal force (Min.) |
| | | | 4.5N | 1.5N |
| 6.1.5 | 压着部位抗张强度 Crimp tensile strength | 在已压接端子的头部和导线上施加拉力, 并测量将导线从端子拉出或导线断裂所需的力, 测试速度不大于 25 mm/min.。 Pulling load shall be applied to a correctly crimped contact and a wire. The load required to pull the wire out of the contact or break the wire shall be measured. (Testing speed: <25 mm/min.) GB/T5095.8 Method 16d / EIA-364-08B | AWG#24: 30N Min. AWG#22: 45N Min. AWG#20: 65N Min. AWG#18: 80N Min. | |
| 6.1.6 | 机械振动 Vibration | 插合连接器, 串联在直流电源上, 电流100 mA; 并模拟正常工作状态: 振频为 (10~55~10) Hz, 每个循环时间为1分钟, 振幅1.52 mm. 沿XYZ三轴正反方向各循环2小时。 Mate connectors subjected them to following vibration conditions, for a period of 2 hours in each of 3 mutually perpendicular axes, 100 mA current shall be applied. Frequency: (10~55~10) Hz/min. Cycling time: 1min. Amplitude: 1.52 mm. GB/T 5095.4 Method 6d / EIA-364-28D | 外观: 无损伤 (参照6.1.1) Appearance: no damage.(refer to 6.1.1) 接触电阻: 30 mΩ Max. Contact resistance: 30 mΩ Max. 电流中断时间: 1 μsec Max. Current interruption: 1 μsec Max. | |

| | | | | | |
|----------------------|------------|--------------------|--------|--------------------|----|
| 产品名称 Product name | TJC3001 系列 | 编号 Document No. | PS4175 | 版本号 Version No. | V0 |
|----------------------|------------|--------------------|--------|--------------------|----|

| | | | |
|-------|--------------------|---|---|
| 6.1.7 | 机械冲击 Shock | <p>连接器相配，沿XYZ三轴正反方向各冲击3次（总共18次），在测试过程中通以100 mA电流。 冲击强度：490 m/s² 持续时间：11 ms</p> <p>Mate connectors and subject them to the following shock conditions, 3 times of shock shall be applied for each 6 directions along 3 mutually perpendicular axes, passing DC 100mA current during the test.(total of 18 shocks) Test pulse: 490 m/s² Duration: 11 ms</p> <p>GB/T 5095.4 Method 6c / EIA-364-27B</p> | <p>外观：无损伤（参照6.1.1） Appearance: no damage.(refer to 6.1.1)</p> <p>电流中断时间: 1 μsec Max. Current interruption: 1 μsec Max.</p> |
| 6.1.8 | 机械寿命 Durability | <p>以每分钟 10 次的速度插拔 30 次。 30 cycles for mating and unmating test at the speed of 10 cycles per minute</p> <p>GB/T 5095.5 Method 9a / EIA-364-09C</p> | <p>外观：无损伤（参照6.1.1） Appearance: no damage.(refer to 6.1.1)</p> <p>接触电阻：30mΩ Max. Contact resistance: 30mΩ Max.</p> |

6.2 电气性能 Electrical

| 序号 No. | 项 目 Item | 测试条件 Test condition | 规格 Requirement |
|-----------|-------------------------------|--|--|
| 6.2.1 | 接触电阻 Contact resistance | <p>插配阴阳连接器后,用小功率电路进行测试。 Mate connectors with dry circuit to test contact resistance</p> <p>GB/T 5095.2 Method 2a / EIA-364-23B</p> | <p>20 mΩ Max. (Initial) 30 m Ω Max. (Final)</p> |
| 6.2.2 | 绝缘电阻 Insulation resistance | <p>在相邻接触件之间或地线之间,用 500 V DC 电压进行测试。 Apply a voltage of 500 V DC between adjacent contacts and between contacts to ground.</p> <p>GB/T 5095.2 Method 3a / EIA-364-21C</p> | <p>1000 MΩ Min. (Initial) 500 MΩ Min. (Final)</p> |
| 6.2.3 | 耐电压 Withstand voltage | <p>相邻接触件之间或地线之间施加 1000 V AC (有效值),漏电流 1 mA 的电压作用,时间 1min.。 Apply a voltage of 1000 V AC (rms) and leakage current of 1 mA between adjacent contacts or ground cables for 1 minute.</p> <p>GB/T 5095.2 Method 4a / EIA-364-20B</p> | <p>外观：无击穿和飞弧现象 Appearance: no breakdown or flashover</p> |
| 6.2.4 | 温升 Temperature rise | <p>插合连接器，通以最大允许电流，测温度的差值。 Mate connectors and measure the temperature rise of contact when the maximum AC rated current is passed.</p> <p>GB/T 5095.3 Method 5a / EIA-364-70A</p> | <p>Δ30℃ Max.</p> |

| | | | | | |
|----------------------|------------|--------------------|--------|--------------------|----|
| 产品名称 Product name | TJC3001 系列 | 编号 Document No. | PS4175 | 版本号 Version No. | V0 |
|----------------------|------------|--------------------|--------|--------------------|----|



产品规格书

PRODUCT SPECIFICATION

6.3 环境性能 Environmental

| 序号 No. | 项 目 Item | 测试条件 Test condition | 规 格 Requirement | | | | | | | | | | |
|----------------|-----------------------------|---|--|----------|---------|-------|--------------|----------------|---------|-------|--------------|----------------|--|
| 6.3.1 | 耐高温 Heat resistance | 连接器配合后, 于 (85±2) °C 的空气中放置 96 小时, 再回到室温中放置 (1~2) 小时测定。 Mated connectors exposed to the condition of (85±2) °C for 96 hours, recovery time (1~2) hours GB/T 5095.6 Method 11i / EIA-364-17B | 外观: 无损伤 (参照6.1.1) Appearance: no damage.(refer to 6.1.1) 接触电阻: 30 mΩ Max. Contact resistance: 30 mΩ Max. 绝缘电阻: 500 MΩ Min. Insulation resistance:500 MΩ Min. 耐电压: 1000 V Min. Withstand voltage: 1000 V Min. | | | | | | | | | | |
| 6.3.2 | 耐低温 Cold resistance | 连接器配合后, 于 (-25±2) °C 的空气中放置 96 小时, 再回到室温中放置 (1~2) 小时测定。 Mated connectors exposed to the condition of (-25±2) °C for 96hours, recovery time (1~2) hours GB/T 5095.6 Method 11j / EIA-364-17B | 外观: 无损伤 (参照6.1.1) Appearance: no damage.(refer to 6.1.1) 接触电阻: 30 mΩ Max. Contact resistance: 30 mΩ Max. 绝缘电阻: 500 MΩ Min. Insulation resistance:500 MΩ Min. 耐电压: 1000 V Min. Withstand voltage: 1000 V Min. | | | | | | | | | | |
| 6.3.3 | 恒定湿热 Humidity | 温度(40±2) °C, 相对湿度(90~95) %, 搁置时间 96 小时, 取出恢复 (1~2) 小时后检查。 Mated connectors exposed to the condition of temperature (40±2) °C, humidity (90~95) % for 96 hours, recovery time (1~2) hours GB/T 5095.6 Method 11c / EIA-364-31B | 外观: 无损伤 (参照6.1.1) Appearance: no damage.(refer to 6.1.1) 接触电阻: 30 mΩ Max. Contact resistance: 30 mΩ Max. 绝缘电阻: 500 MΩ Min. Insulation resistance:500 MΩ Min. 耐电压: 1000 V Min. Withstand voltage: 1000 V Min. | | | | | | | | | | |
| 6.3.4 | 温度循环 Temperature cycling | 把试验样品分别放入高、低温试验箱中, 按下列步骤调试温度: a) 在(-55±2) °C 的恒温条件下放置 0.5 小时; b) 在(85±2) °C 的恒温条件下放置 0.5 小时; 从 a)到 b)为一个循环, 周期温度转换时间应不大于 5 分钟, 共进行 25 个循环,恢复 (1~2) 小时后检查。 Mated connectors shall be tested under the following conditions <table border="1" style="margin-left: 20px;"> <thead> <tr> <th>Temperature °C</th> <th>Duration</th> </tr> </thead> <tbody> <tr> <td>1 -55±2</td> <td>0.5 h</td> </tr> <tr> <td>2 Room Temp.</td> <td>5 minutes Max.</td> </tr> <tr> <td>3 +85±2</td> <td>0.5 h</td> </tr> <tr> <td>4 Room Temp.</td> <td>5 minutes Max.</td> </tr> </tbody> </table> Step 1 to 4 is one cycle,25 cycles shall be tested, recovery time (1~2) hours GB/T 5095.6 method 11d / EIA-364-32C | Temperature °C | Duration | 1 -55±2 | 0.5 h | 2 Room Temp. | 5 minutes Max. | 3 +85±2 | 0.5 h | 4 Room Temp. | 5 minutes Max. | 外观: 无损伤 (参照6.1.1) Appearance: no damage.(refer to 6.1.1) 接触电阻: 30 mΩ Max. Contact resistance: 30 mΩ Max. 绝缘电阻: 500 MΩ Min. Insulation resistance:500 MΩ Min. 耐电压: 1000 V Min. Withstand voltage: 1000 V Min. |
| Temperature °C | Duration | | | | | | | | | | | | |
| 1 -55±2 | 0.5 h | | | | | | | | | | | | |
| 2 Room Temp. | 5 minutes Max. | | | | | | | | | | | | |
| 3 +85±2 | 0.5 h | | | | | | | | | | | | |
| 4 Room Temp. | 5 minutes Max. | | | | | | | | | | | | |
| 6.3.5 | 盐雾 Salt spray | 把试验样品从试验箱顶悬挂下来, 采用浓度为(5±1) % (质量百分比)的氯化钠溶液, 在(35±2) °C 温度下连续雾化 48 小时, 试验后用流动的蒸馏水轻轻洗去表面沉积物。在常温常湿条件下恢复 (1~2) 小时。 48 hours spray, at temp (35±2) °C, NaCl mist concentration (5±1) %. After test wash parts and put it into room ambient for (1~2) hours GB/T 5095.6 Method 11f / EIA-364-26B | 外观: 无损伤(五金件应无露出底金属的严重锈蚀; 使用预镀好的型材, 其落料面允许有不影响其性能的轻微腐蚀。) Appearance: no damage (no erosion on material exposed. and plating material, slight erosion on the cutting surface is acceptable) 接触电阻: 30 mΩ Max. Contact resistance: 30 mΩ Max. | | | | | | | | | | |

| | | | | | |
|----------------------|------------|--------------------|--------|--------------------|----|
| 产品名称 Product name | TJC3001 系列 | 编号 Document No. | PS4175 | 版本号 Version No. | V0 |
|----------------------|------------|--------------------|--------|--------------------|----|



产品规格书

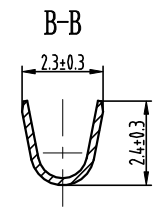
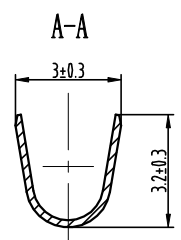
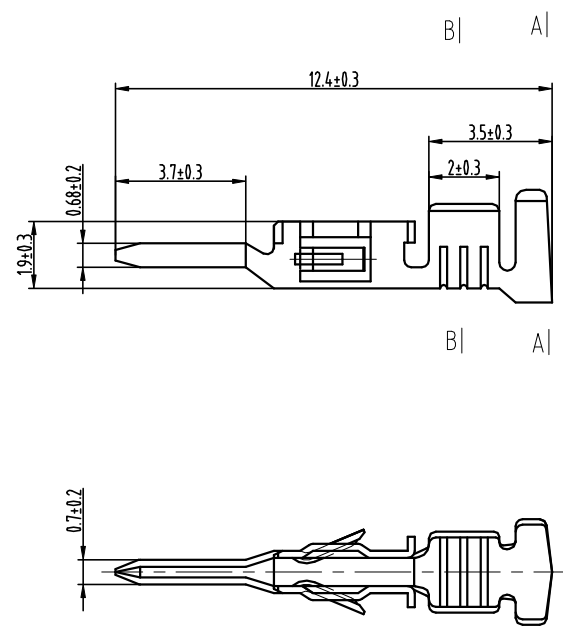
PRODUCT SPECIFICATION

7.测试分组 Test sequences (Samples:5PCS)

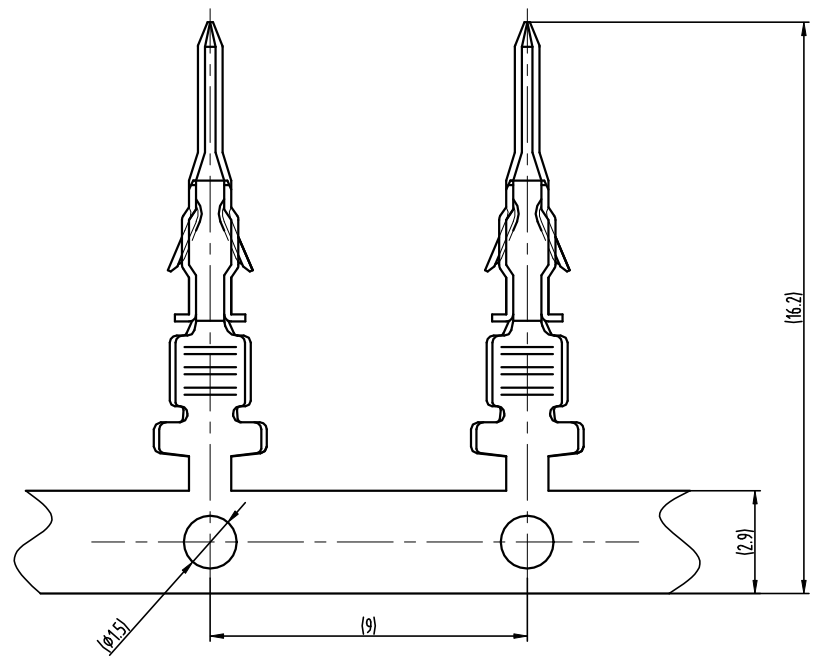
| 测试组 Group number | A | B | C | D | E | F | G | H | I | J | K | M | N | O | P |
|--|---|---|---|---|-----|---|-----|---|---|---|-----|-----|-----|-----|-----|
| 外观 Appearance | 1 | 1 | 1 | 1 | 1,5 | 1 | 1,5 | 1 | 1 | 1 | 1,7 | 1,7 | 1,7 | 1,7 | 1,5 |
| 端子插入力与固定力 Insertion force and retention force for contact | 2 | | | | | | | | | | | | | | |
| 针的固定力 Post retention force | | 2 | | | | | | | | | | | | | |
| 插簧与插针的插拔力 Insertion and withdrawal force for pin in the contact | | | 2 | | | | | | | | | | | | |
| 压着部位抗张强度 Crimp tensile strength | | | | 2 | | | | | | | | | | | |
| 机械振动 Vibration | | | | | 3 | | | | | | | | | | |
| 机械冲击 Shock | | | | | | 2 | | | | | | | | | |
| 机械寿命 Durability | | | | | | | 3 | | | | | | | | |
| 接触电阻 Contact resistance | | | | | 2,4 | | 2,4 | | | | 2,4 | 2,4 | 2,4 | 2,4 | 2,4 |
| 绝缘电阻 Insulation resistance | | | | | | | | 2 | | | 5 | 5 | 5 | 5 | |
| 耐电压 Withstand voltage | | | | | | | | | 2 | | 6 | 6 | 6 | 6 | |
| 温升 Temperature rise | | | | | | | | | | 2 | | | | | |
| 耐高温 Heat resistance | | | | | | | | | | | 3 | | | | |
| 耐低温 Cold resistance | | | | | | | | | | | | 3 | | | |
| 恒定湿热 Humidity | | | | | | | | | | | | | 3 | | |
| 温度循环 Temperature cycling | | | | | | | | | | | | | | 3 | |
| 盐雾 Salt spray | | | | | | | | | | | | | | | 3 |

| | | | | | |
|----------------------|------------|--------------------|--------|--------------------|----|
| 产品名称 Product name | TJC3001 系列 | 编号 Document No. | PS4175 | 版本号 Version No. | V0 |
| PAGE: 8 / 8 | | | | | |

| General Tolerance | Dimension | Tolerance | Rev. No | Location | Description | Reviser | Date |
|-------------------|-----------|-----------|---------|----------|-------------|---------|------|
| | 0~3 | ±0.13 | | | | | |
| | 3~18 | ±0.23 | | | | | |
| | 18~50 | ±0.35 | | | | | |
| | ≥50 | ±0.55 | | | | | |



Contact view
(FYI)

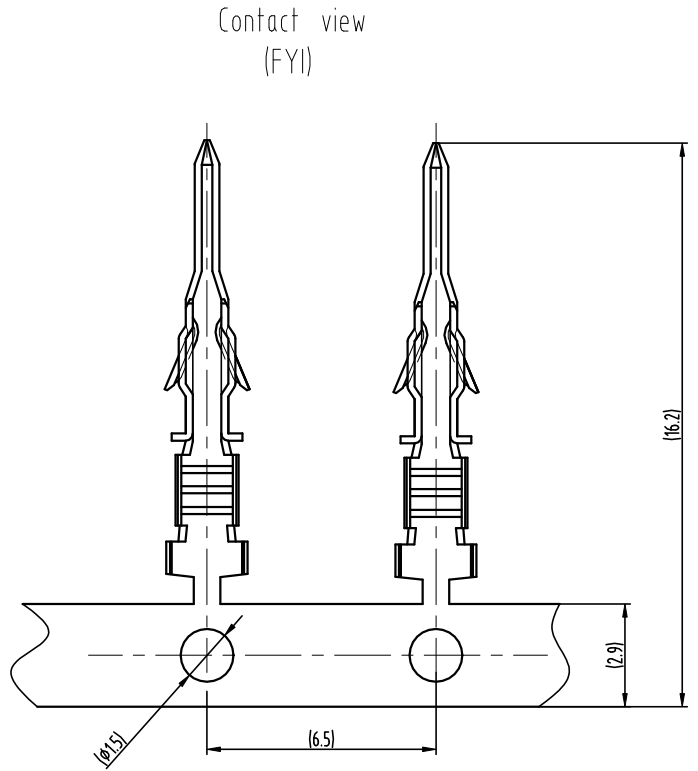
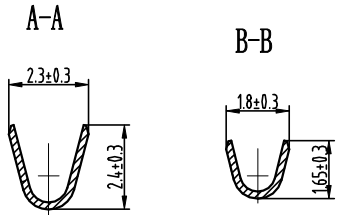
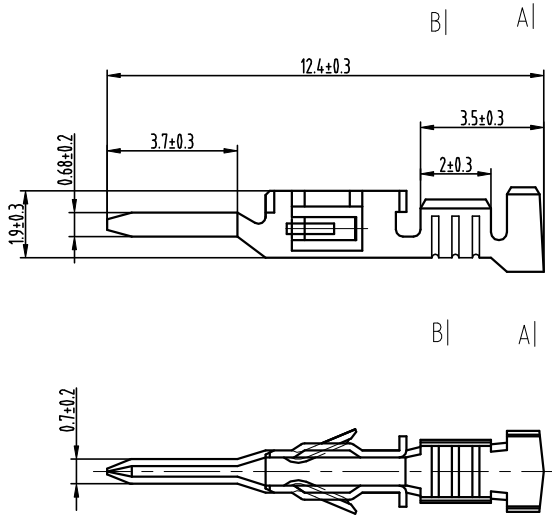


Notes:

- 1.Material: Phosphor bronze,thickness=0.2mm
- 2.Surface finish: tin plated
- 3.Matched receptacle housing: TJC3001-2XnARP/TJC3001-2XnAR
- 4.Applicable wires: AWG#20~ AWG#18
- 5.Compliant to the current RoHS

| CUSTOMER DRAWING | | | | | | Title: 3.0mm pitch WTW pin contact | |
|------------------|----------------------|-----------|--------|------|----------------------------|---------------------------------------|--|
| Drawn | Zhibin.Wang 2022.8.3 | Unit | Scale | Size | Edition | Part No.: CZ-TJC3001-1-*** | |
| Checked | Ji.Wu 2022.8.3 | mm | 5:1 | A4 | B0 | Previous part No.: TJC3002 插针B | |
| Approved | Dongxu.Liu 2022.8.3 | Sheet No. | 1 Of 1 | | Document No.: CP-DWG-01639 | | |
| CWB | | | | | | Specification No.: PS4175 | |

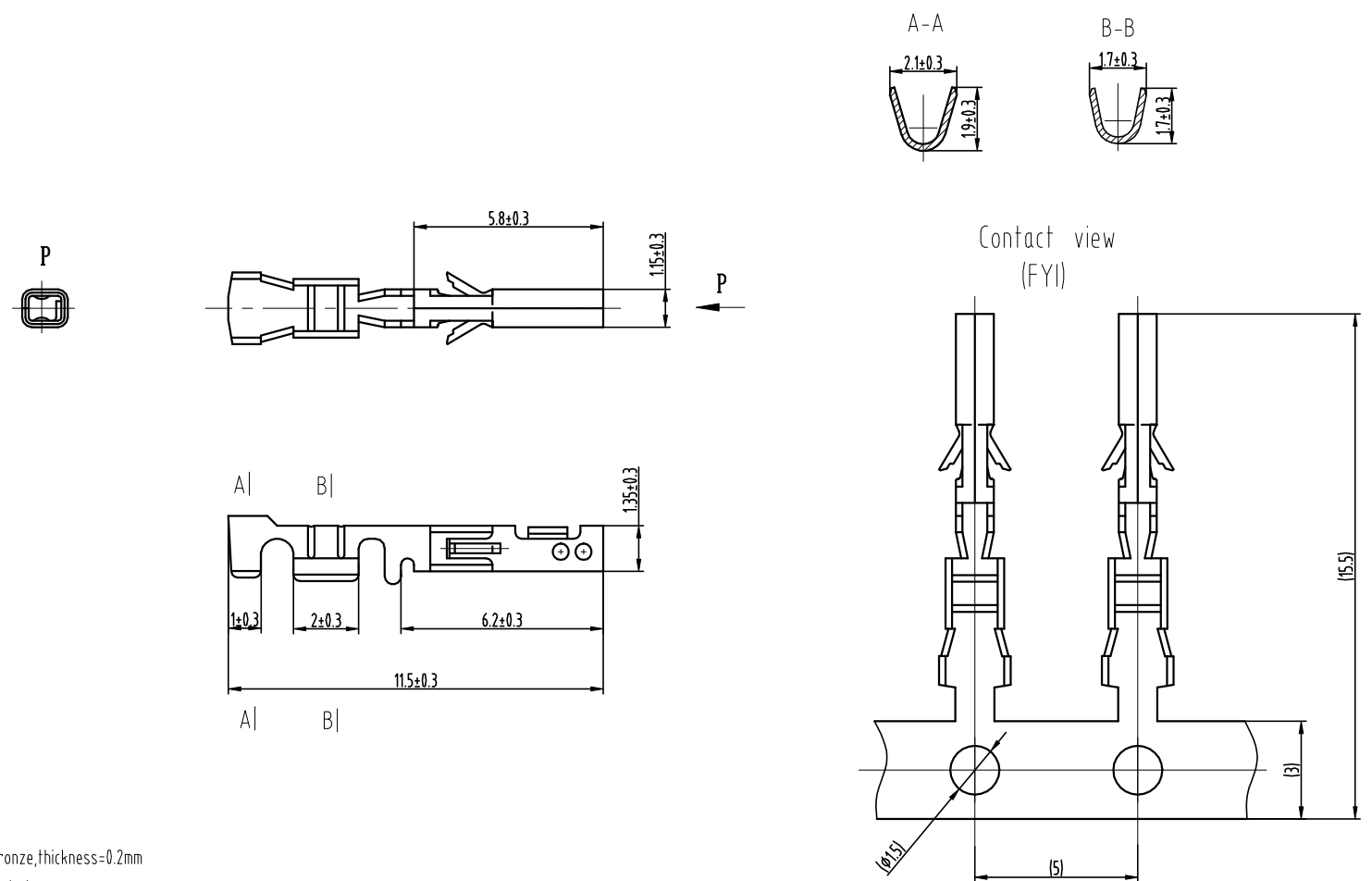
| General Tolerance | Dimension | Tolerance | Rev. No | Location | Description | Reviser | Date |
|-------------------|-----------|-----------|---------|----------|-------------|---------|------|
| | 0~3 | ±0.13 | | | | | |
| | 3~18 | ±0.23 | | | | | |
| | 18~50 | ±0.35 | | | | | |
| | ≥50 | ±0.55 | | | | | |



- Notes:
1. Material: Phosphor bronze, thickness=0.2mm
 2. Surface finish: tin plated
 3. Matched receptacle housing: TJC3001-2XnARP/TJC3001-2XnAR
 4. Applicable wires: AWG#24~AWG#22
 5. Compliant to the current RoHS

| CUSTOMER DRAWING | | | | | | Title: 3.0mm pitch WTW pin contact | |
|------------------|----------------------|------------|-------|--------|---------|---------------------------------------|--|
| Drawn | Zhibin.Wang 2022.8.3 | Unit | Scale | Size | Edition | Part No.: CZ-TJC3001-** | |
| Checked | Ji.Wu 2022.8.3 | mm | 5:1 | A4 | B0 | Previous part No.: TJC3002 插针 | |
| | | Sheet No. | | 1 of 1 | | Document No.: CP-DWG-01638 | |
| Approved | Dongxu.Liu 2022.8.3 | CWB | | | | Specification No.: PS4175 | |

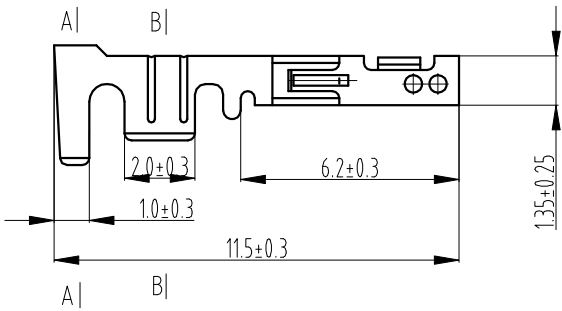
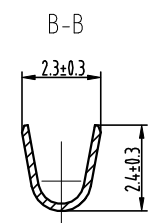
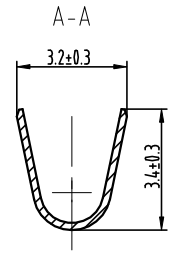
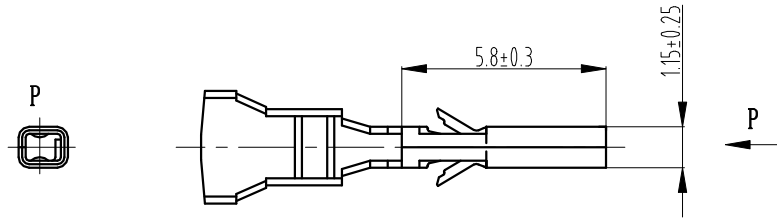
| General Tolerance | Dimension | Tolerance | Rev. No | Location | Description | Reviser | Date |
|-------------------|-----------|-----------|---------|----------|-------------|---------|------|
| | 0~3 | ±0.13 | | | | | |
| | 3~18 | ±0.23 | | | | | |
| | 18~50 | ±0.35 | | | | | |
| | ≥50 | ±0.55 | | | | | |



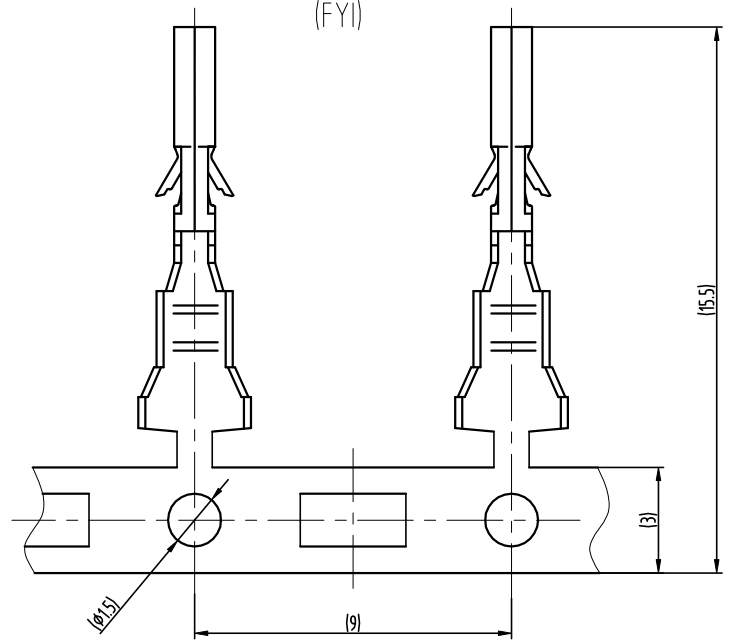
- Notes:
- 1.Material: Phosphor bronze,thickness=0.2mm
 - 2.Surface finish: tin plated
 - 3.Matched plug housing: TJC3001-2XnY
 - 4.Applicable wires: AWG#24~AWG#22
 - 5.Compliant to the current RoHS

| CUSTOMER DRAWING | | | | | | Title: 3.0mm pitch WTW socket contact | |
|------------------|----------------------|------------|-------|--------|---------|--|--|
| Drawn | Zhibin.Wang 2022.8.3 | Unit | Scale | Size | Edition | Part No.: CH-TJC3001-1-** | |
| Checked | Ji.Wu 2022.8.3 | mm | 5:1 | A4 | B0 | Previous part No.: TJC3001插簧A | |
| | | Sheet No. | | 1 of 1 | | Document No.: CP-DWG-01637 | |
| Approved | Dongxu.Liu 2022.8.3 | CWB | | | | Specification No.: PS4175 | |

| General Tolerance | Dimension | Tolerance | Rev. No | Location | Description | Reviser | Date |
|-------------------|-----------|-----------|---------|----------|-------------|---------|------|
| | 0~3 | ±0.13 | | | | | |
| | 3~18 | ±0.23 | | | | | |
| | 18~50 | ±0.35 | | | | | |
| | ≥50 | ±0.55 | | | | | |



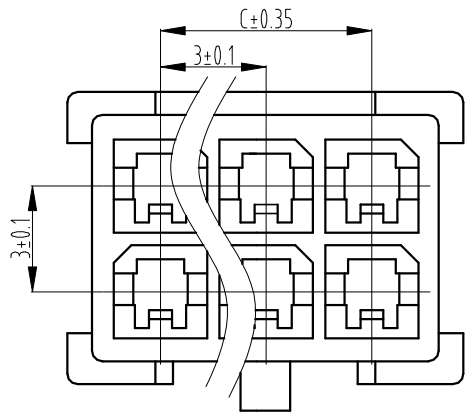
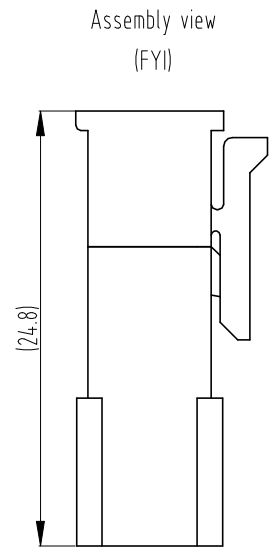
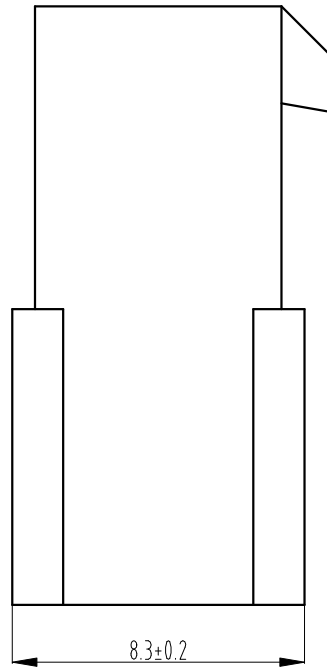
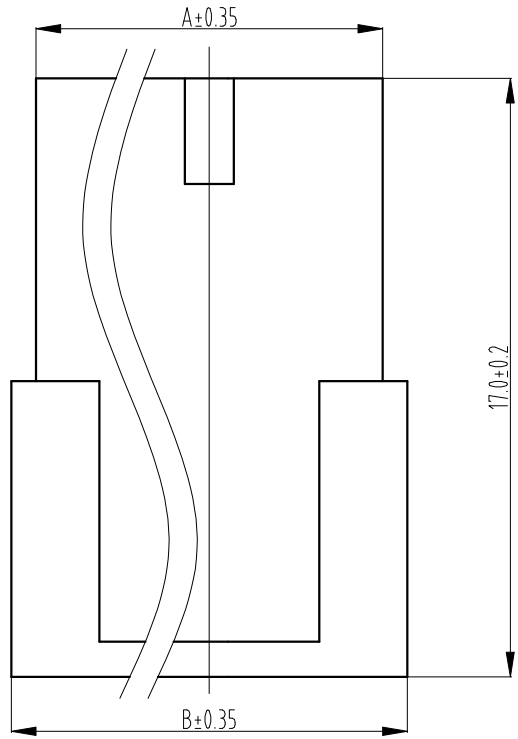
Contact view
(FYI)



- Notes:
- 1.Material: Phosphor bronze,thickness=0.2mm
 - 2.Surface finish: tin plated
 - 3.Matched plug housing: TJC3001-2XnY
 - 4.Applicable wires: AWG#20~ AWG#18
 - 5.Compliant to the current RoHS

| CUSTOMER DRAWING | | | | | | Title: 3.0mm pitch WTW socket contact | |
|------------------|----------------------|-----------|--------|------|----------------------------|--|---------------------------|
| Drawn | Zhibin.Wang 2022.8.3 | Unit | Scale | Size | Edition | Part No.: CH-TJC3001-** | |
| Checked | Ji.Wu 2022.8.3 | mm | 5:1 | A4 | B0 | Previous part No.: TJC3001插簧 | |
| Approved | Dongxu.Liu 2022.8.3 | Sheet No. | 1 of 1 | | Document No.: CP-DWG-01636 | | Specification No.: PS4175 |
| CWB | | | | | | | |

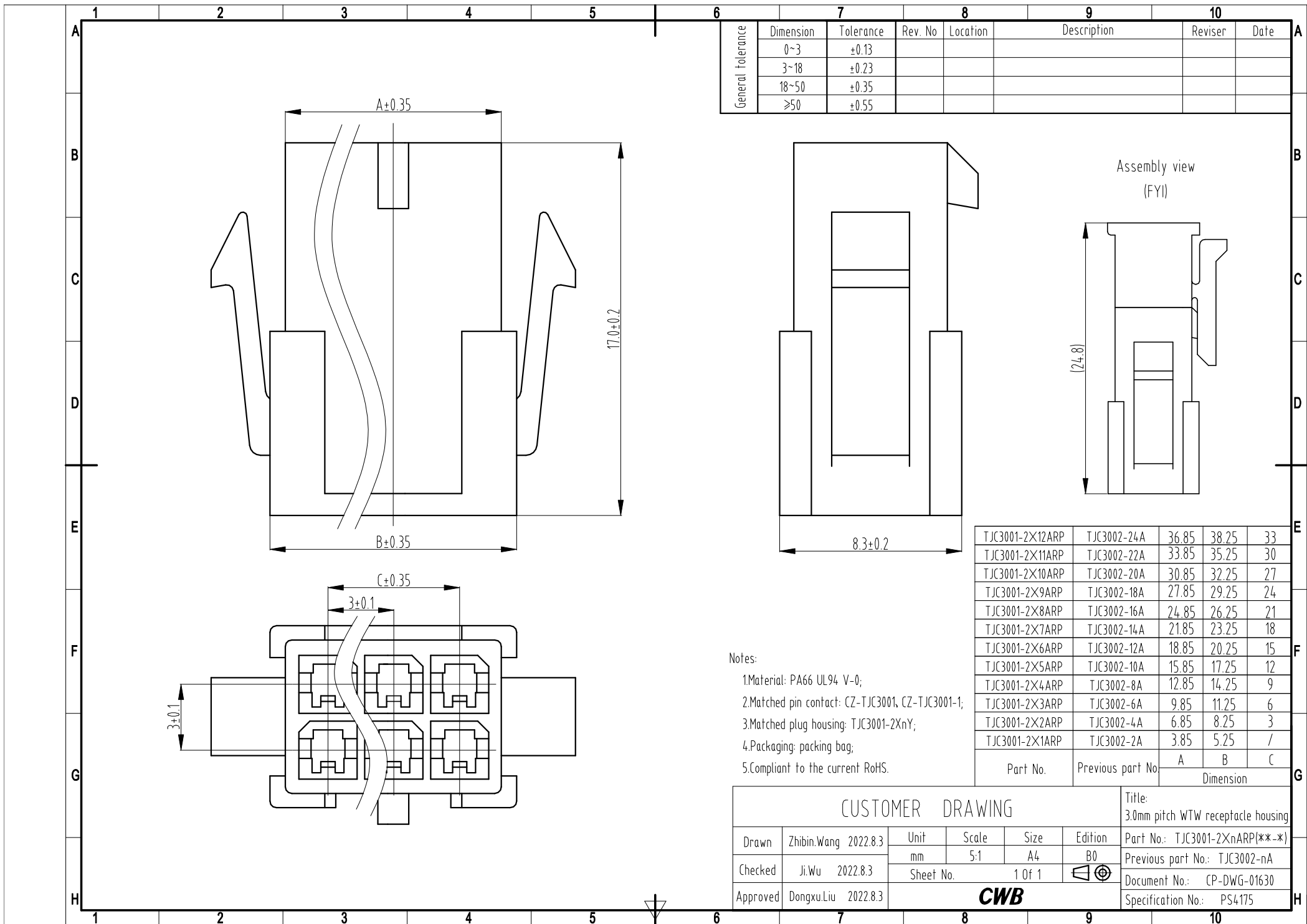
| General Tolerance | Dimension | Tolerance | Rev. No | Location | Description | Reviser | Date |
|-------------------|-----------|-----------|---------|----------|-------------|---------|------|
| | 0~3 | ±0.13 | | | | | |
| | 3~18 | ±0.23 | | | | | |
| | 18~50 | ±0.35 | | | | | |
| | ≥50 | ±0.55 | | | | | |



| | | | | |
|----------------|-------------------|-----------|-------|----|
| TJC3001-2X12AR | TJC3002-24A-1 | 36.85 | 38.25 | 33 |
| TJC3001-2X11AR | TJC3002-22A-1 | 33.85 | 35.25 | 30 |
| TJC3001-2X10AR | TJC3002-20A-1 | 30.85 | 32.25 | 27 |
| TJC3001-2X9AR | TJC3002-18A-1 | 27.85 | 29.25 | 24 |
| TJC3001-2X8AR | TJC3002-16A-1 | 24.85 | 26.25 | 21 |
| TJC3001-2X7AR | TJC3002-14A-1 | 21.85 | 23.25 | 18 |
| TJC3001-2X6AR | TJC3002-12A-1 | 18.85 | 20.25 | 15 |
| TJC3001-2X5AR | TJC3002-10A-1 | 15.85 | 17.25 | 12 |
| TJC3001-2X4AR | TJC3002-8A-1 | 12.85 | 14.25 | 9 |
| TJC3001-2X3AR | TJC3002-6A-2 | 9.85 | 11.25 | 6 |
| TJC3001-2X2AR | TJC3002-4A-1 | 6.85 | 8.25 | 3 |
| TJC3001-2X1AR | TJC3002-2A-1 | 3.85 | 5.25 | / |
| Part No. | Previous part No. | A | B | C |
| | | Dimension | | |

- Notes:
- 1.Material: PA66 UL94 V-0;
 - 2.Matched pin contact: CZ-TJC3001, CZ-TJC3001-1;
 - 3.Matched plug housing: TJC3001-2XnY;
 - 4.Packaging: packing bag;
 - 5.Compliant to the current RoHS.

| CUSTOMER DRAWING | | | | | | Title: 3.0mm pitch WTW receptacle housing | |
|------------------|-------------|----------|-----------|--------|------|--|-----------------------------------|
| Drawn | Zhibin.Wang | 2022.8.3 | Unit | Scale | Size | Edition | Part No.: TJC3001-2XnAR(**-*) |
| Checked | Ji.Wu | 2022.8.3 | mm | 5:1 | A4 | B0 | Previous part No.:TJC3002-nA-1/-2 |
| Approved | Dongxu.Liu | 2022.8.3 | Sheet No. | 1 of 1 | | | Document No.: CP-DWG-01631 |
| CWB | | | | | | Specification No.: PS4175 | |



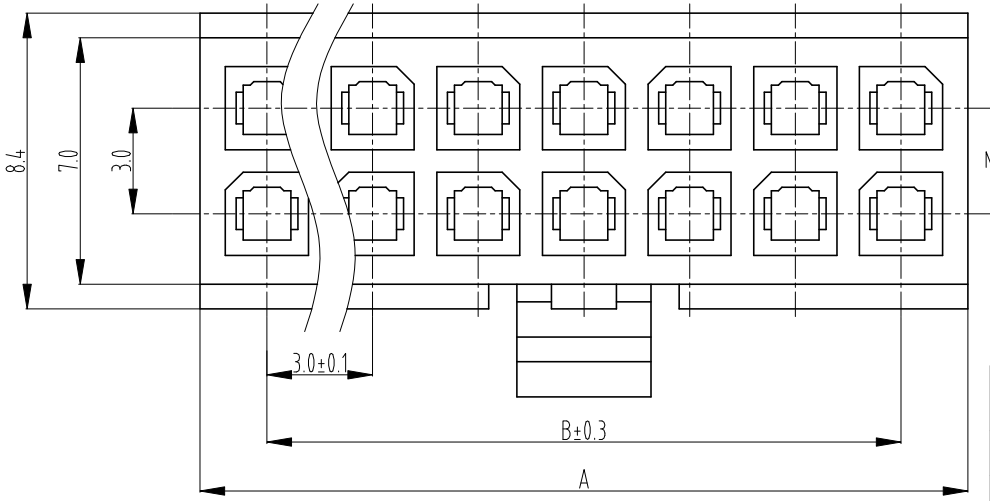
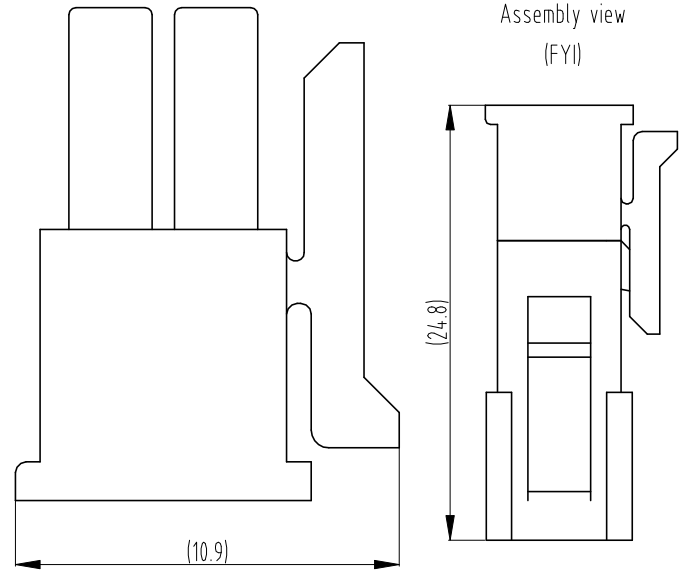
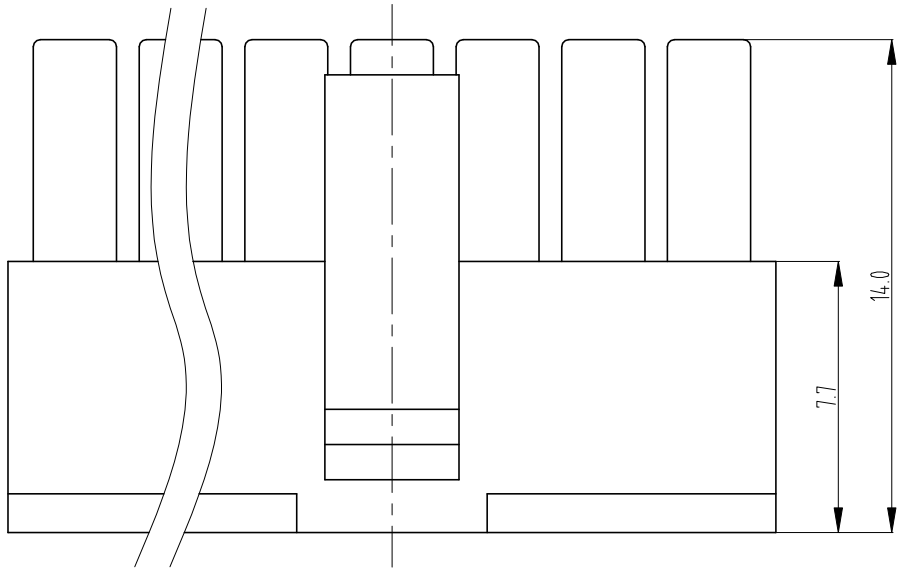
| General Tolerance | Dimension | Tolerance | Rev. No | Location | Description | Reviser | Date |
|-------------------|-----------|-----------|---------|----------|-------------|---------|------|
| | 0~3 | ±0.13 | | | | | |
| | 3~18 | ±0.23 | | | | | |
| | 18~50 | ±0.35 | | | | | |
| | ≥50 | ±0.55 | | | | | |

| | | | | |
|-----------------|-------------------|-----------|-------|----|
| TJC3001-2X12ARP | TJC3002-24A | 36.85 | 38.25 | 33 |
| TJC3001-2X11ARP | TJC3002-22A | 33.85 | 35.25 | 30 |
| TJC3001-2X10ARP | TJC3002-20A | 30.85 | 32.25 | 27 |
| TJC3001-2X9ARP | TJC3002-18A | 27.85 | 29.25 | 24 |
| TJC3001-2X8ARP | TJC3002-16A | 24.85 | 26.25 | 21 |
| TJC3001-2X7ARP | TJC3002-14A | 21.85 | 23.25 | 18 |
| TJC3001-2X6ARP | TJC3002-12A | 18.85 | 20.25 | 15 |
| TJC3001-2X5ARP | TJC3002-10A | 15.85 | 17.25 | 12 |
| TJC3001-2X4ARP | TJC3002-8A | 12.85 | 14.25 | 9 |
| TJC3001-2X3ARP | TJC3002-6A | 9.85 | 11.25 | 6 |
| TJC3001-2X2ARP | TJC3002-4A | 6.85 | 8.25 | 3 |
| TJC3001-2X1ARP | TJC3002-2A | 3.85 | 5.25 | / |
| Part No. | Previous part No. | Dimension | | |
| | | A | B | C |

- Notes:
- 1.Material: PA66 UL94 V-0;
 - 2.Matched pin contact: CZ-TJC3001, CZ-TJC3001-1;
 - 3.Matched plug housing: TJC3001-2XnY;
 - 4.Packaging: packing bag;
 - 5.Compliant to the current RoHS.

| CUSTOMER DRAWING | | | | | | Title: 3.0mm pitch WTW receptacle housing | |
|------------------|-------------|----------|-----------|--------|------|--|--------------------------------|
| Drawn | Zhibin.Wang | 2022.8.3 | Unit | Scale | Size | Edition | Part No.: TJC3001-2XnARP(**-*) |
| Checked | Ji.Wu | 2022.8.3 | mm | 5:1 | A4 | B0 | Previous part No.: TJC3002-nA |
| Approved | Dongxu.Liu | 2022.8.3 | Sheet No. | 1 of 1 | | | Document No.: CP-DWG-01630 |
| CWB | | | | | | Specification No.: PS4175 | |

| General tolerance | Dimension | Tolerance | Rev. No | Location | Description | Reviser | Date |
|-------------------|-----------|-----------|---------|----------|-------------|---------|------|
| | 0~3 | ±0.13 | | | | | |
| | 3~18 | ±0.23 | | | | | |
| | 18~50 | ±0.35 | | | | | |
| | ≥50 | ±0.55 | | | | | |

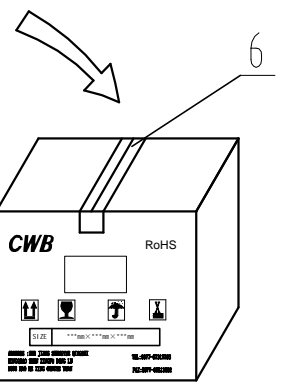
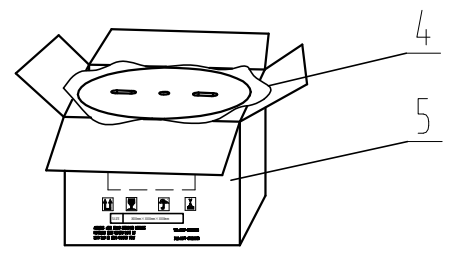
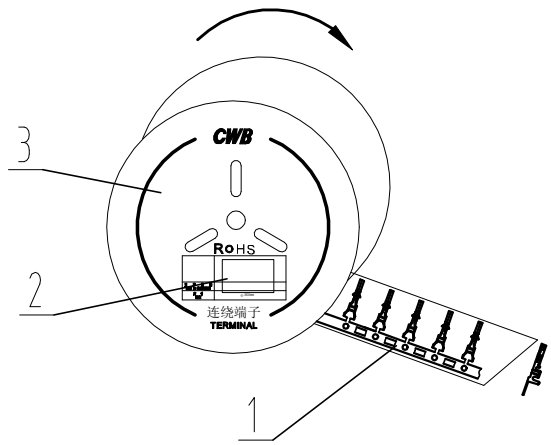


| | | | |
|---------------|-------------------|-----------|------|
| TJC3001-2X12Y | TJC3001-24Y | 33 | 36.8 |
| TJC3001-2X11Y | TJC3001-22Y | 30 | 33.8 |
| TJC3001-2X10Y | TJC3001-20Y | 27 | 30.8 |
| TJC3001-2X9Y | TJC3001-18Y | 24 | 27.8 |
| TJC3001-2X8Y | TJC3001-16Y | 21 | 24.8 |
| TJC3001-2X7Y | TJC3001-14Y | 18 | 21.8 |
| TJC3001-2X6Y | TJC3001-12Y | 15 | 18.8 |
| TJC3001-2X5Y | TJC3001-10Y | 12 | 15.8 |
| TJC3001-2X4Y | TJC3001-8Y | 9 | 12.8 |
| TJC3001-2X3Y | TJC3001-6Y | 6 | 9.8 |
| TJC3001-2X2Y | TJC3001-4Y | 3 | 8.05 |
| TJC3001-2X1Y | TJC3001-2Y | / | 5.05 |
| Part No. | Previous part No. | A | B |
| | | Dimension | |

- Notes:
- 1.Material: PA66 UL94 V-0;
 - 2.Matched socket contact: CH-TJC3001, CH-TJC3001-1;
 - 3.Matched receptacle housing: TJC3001-2XnARP, TJC3001-2XnAR;
 - 4.Packaging: packing bag;
 - 5.Compliant to the current RoHS.

| CUSTOMER DRAWING | | | | | | Title: 3.0mm pitch WTW plug housing | |
|------------------|-------------|----------|-----------|--------|------|--|-------------------------------|
| Drawn | Zhibin.Wang | 2022.8.3 | Unit | Scale | Size | Edition | Part No.: TJC3001-2XnY(**-*) |
| Checked | Ji.Wu | 2022.8.3 | mm | 5:1 | A4 | B0 | Previous part No.: TJC3001-nY |
| Approved | Dongxu.Liu | 2022.8.3 | Sheet No. | 1 of 1 | | | Document No.: CP-DWG-01632 |
| CWB | | | | | | Specification No.: PS4175 | |

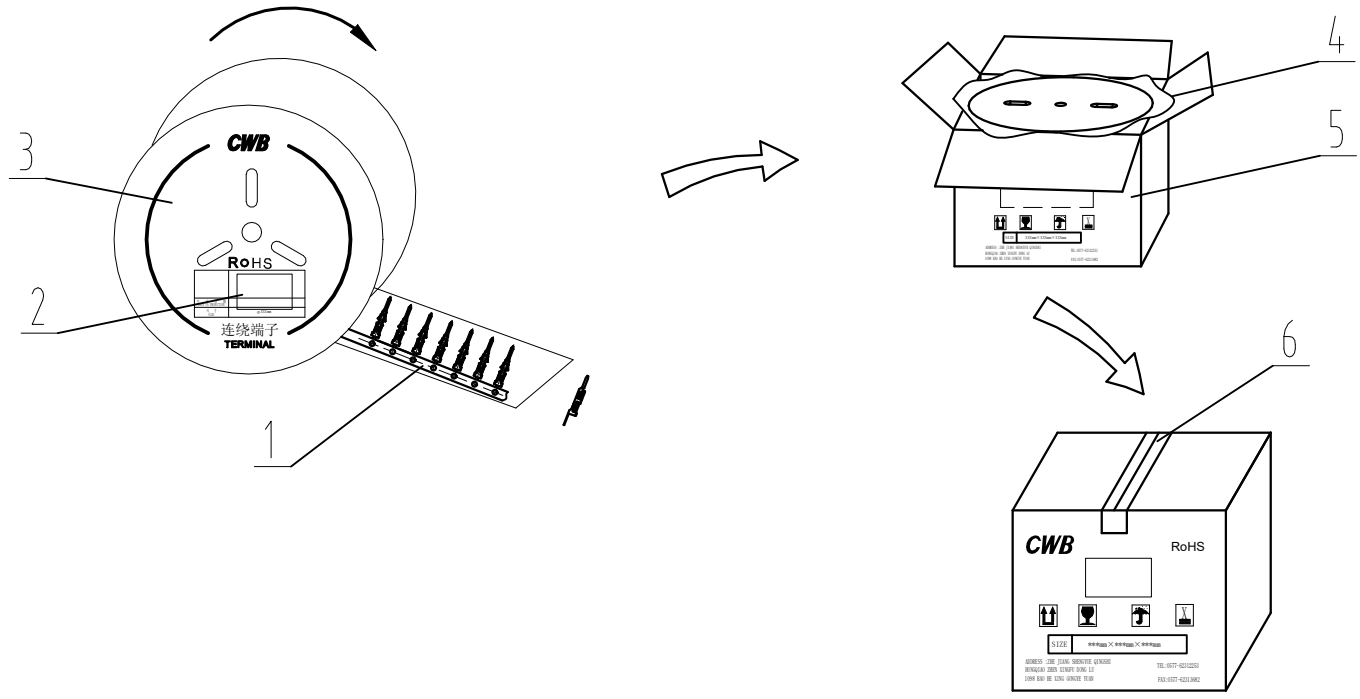
| General Tolerance | Dimension | Tolerance | Rev. No | Location | Description | Reviser | Date |
|-------------------|-----------|-----------|---------|----------|-------------|---------|------|
| | 0~3 | ±0.13 | | | | | |
| | 3~18 | ±0.23 | | | | | |
| | 18~50 | ±0.35 | | | | | |
| | ≥50 | ±0.55 | | | | | |



| | | | | |
|--------|----------------------------|--------------|-------------------|-------------|
| 6 | Gummed tape | | | |
| 5 | Packing box | | | |
| 4 | Packing bag | | | |
| 3 | Reel | | | |
| 2 | Certificate | CH-TJC3001-1 | TJC3001 插簧 A | 20Kpcs/reel |
| 1 | TJC3001 series pin contact | CH-TJC3001 | TJC3001 插簧 A | 6KPCS/reel |
| Number | Designation | Part No. | Previous part No. | Pcs/reel |

| CUSTOMER DRAWING | | | | | | Title: Packaging specification | |
|------------------|----------------------|------------------|-------|------|---------|---|--|
| Drawn | Zhibin.Wang 2022.8.3 | Unit | Scale | Size | Edition | Part No.:CH-TJC3001-**/ CH-TJC3001-1-** | |
| Checked | Ji.Wu 2022.8.3 | mm | / | A4 | B0 | Part No.: TJC3001 插簧/TJC3001 插簧 A | |
| Approved | Dongxu.Liu 2022.8.3 | Sheet No. 1 of 1 | | | | Document No.: BZ-DWG-00877 | |
| | | | | | | Specification No.: PS4175 | |

| General Tolerance | Dimension | Tolerance | Rev. No | Location | Description | Reviser | Date |
|-------------------|-----------|-----------|---------|----------|-------------|---------|------|
| | 0~3 | ±0.13 | | | | | |
| | 3~18 | ±0.23 | | | | | |
| | 18~50 | ±0.35 | | | | | |
| | ≥50 | ±0.55 | | | | | |

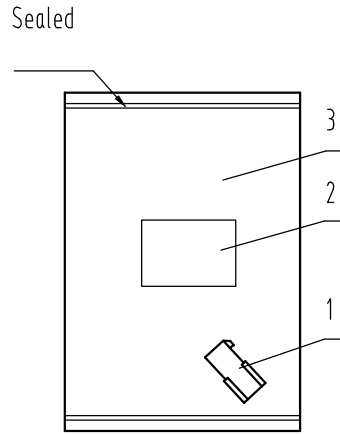


| | | | | |
|--------|----------------------------|--------------|-------------------|-------------|
| 6 | Gummed tape | | | |
| 5 | Packing box | | | |
| 4 | Packing bag | | | |
| 3 | Reel | | | |
| 2 | Certificate | CZ-TJC3001-1 | TJC3002插针B | 6KPcs/reel |
| 1 | TJC3001 series pin contact | CZ-TJC3001 | TJC3002插针 | 10KPcs/reel |
| Number | Designation | Part No. | Previous part No. | Pcs/reel |

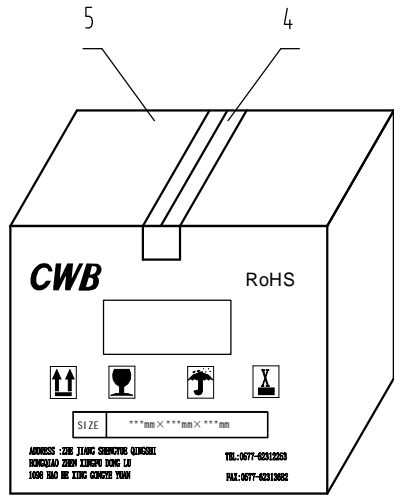
| CUSTOMER DRAWING | | | | | | Title: Packaging specification | |
|------------------|-----------------------|-----------|-------|--------|---------|--|--|
| Drawn | Zhibing.Wang 2022.8.3 | Unit | Scale | Size | Edition | Part No.: CZ-TJC3001-**/ CZ-TJC3001-1-** | |
| Checked | Ji.Wu 2022.8.3 | mm | / | A4 | B0 | Part No.: TJC3002插针/TJC3002插针B | |
| Approved | Dongxu.Liu 2022.8.3 | Sheet No. | | 1 Of 1 | | Document No.: BZ-DWG-00878 | |
| CWB | | | | | | Specification No.: PS4175 | |

| General Tolerance | Dimension | Tolerance | Rev. No | Location | Description | Reviser | Date |
|-------------------|-----------|-----------|---------|----------|-------------|---------|------|
| | 0~3 | ±0.13 | | | | | |
| | 3~18 | ±0.23 | | | | | |
| | 18~50 | ±0.35 | | | | | |
| | ≥50 | ±0.55 | | | | | |

Packing bag



Packing box



| 5 | Packing box |
|--------|---------------------------------|
| 4 | Gummed tape |
| 3 | Packing bag |
| 2 | Certificate |
| 1 | TJC3001 series housing/retainer |
| Number | Designation |

| TJC3001-2X12Y | TJC3001-24Y | 500 | TJC3001-2X12AR | TJC3002-24A-1 | 500 | TJC3001-2X12ARP | TJC3002-24A | 500 |
|---------------|-------------------|---------|----------------|-------------------|---------|-----------------|-------------------|---------|
| TJC3001-2X11Y | TJC3001-22Y | 500 | TJC3001-2X11AR | TJC3002-22A-1 | 500 | TJC3001-2X11ARP | TJC3002-22A | 500 |
| TJC3001-2X10Y | TJC3001-20Y | 500 | TJC3001-2X10AR | TJC3002-20A-1 | 500 | TJC3001-2X10ARP | TJC3002-20A | 500 |
| TJC3001-2X9Y | TJC3001-18Y | 500 | TJC3001-2X9AR | TJC3002-18A-1 | 500 | TJC3001-2X9ARP | TJC3002-18A | 500 |
| TJC3001-2X8Y | TJC3001-16Y | 500 | TJC3001-2X8AR | TJC3002-16A-1 | 500 | TJC3001-2X8ARP | TJC3002-16A | 500 |
| TJC3001-2X7Y | TJC3001-14Y | 500 | TJC3001-2X7AR | TJC3002-14A-1 | 500 | TJC3001-2X7ARP | TJC3002-14A | 500 |
| TJC3001-2X6Y | TJC3001-12Y | 1000 | TJC3001-2X6AR | TJC3002-12A-1 | 1000 | TJC3001-2X6ARP | TJC3002-12A | 1000 |
| TJC3001-2X5Y | TJC3001-10Y | 1000 | TJC3001-2X5AR | TJC3002-10A-1 | 1000 | TJC3001-2X5ARP | TJC3002-10A | 1000 |
| TJC3001-2X4Y | TJC3001-8Y | 1000 | TJC3001-2X4AR | TJC3002-8A-1 | 1000 | TJC3001-2X4ARP | TJC3002-8A | 1000 |
| TJC3001-2X3Y | TJC3001-6Y | 1000 | TJC3001-2X3AR | TJC3002-6A-2 | 1000 | TJC3001-2X3ARP | TJC3002-6A | 1000 |
| TJC3001-2X2Y | TJC3001-4Y | 1000 | TJC3001-2X2AR | TJC3002-4A-1 | 1000 | TJC3001-2X2ARP | TJC3002-4A | 1000 |
| TJC3001-2X1Y | TJC3001-2Y | 1000 | TJC3001-2X1AR | TJC3002-2A-1 | 1000 | TJC3001-2X1ARP | TJC3002-2A | 1000 |
| Part No. | Previous part No. | Pcs/bag | Part No. | Previous part No. | Pcs/bag | Part No. | Previous part No. | Pcs/bag |

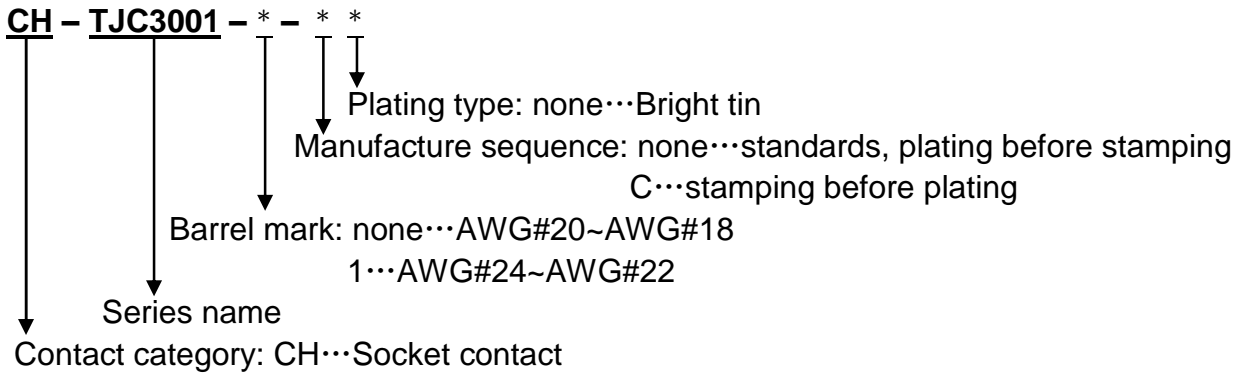
| CUSTOMER DRAWING | | | | | | Title: Packaging specification | | |
|------------------|-------------|----------|-----------|--------|------|--------------------------------|--|---------------------------|
| Drawn | Zhibin.Wang | 2022.8.3 | Unit | Scale | Size | Edition | Part No.:TJC3001 series housing/retainer | |
| Checked | Ji.Wu | 2022.8.3 | mm | / | A4 | B0 | Previous part No.: / | |
| Approved | Dongxu.Liu | 2022.8.3 | Sheet No. | 1 of 1 | | Document No.: BZ-DWG-00879 | | Specification No.: PS4175 |
| CWB | | | | | | | | |

TJC3001 系列命名规则

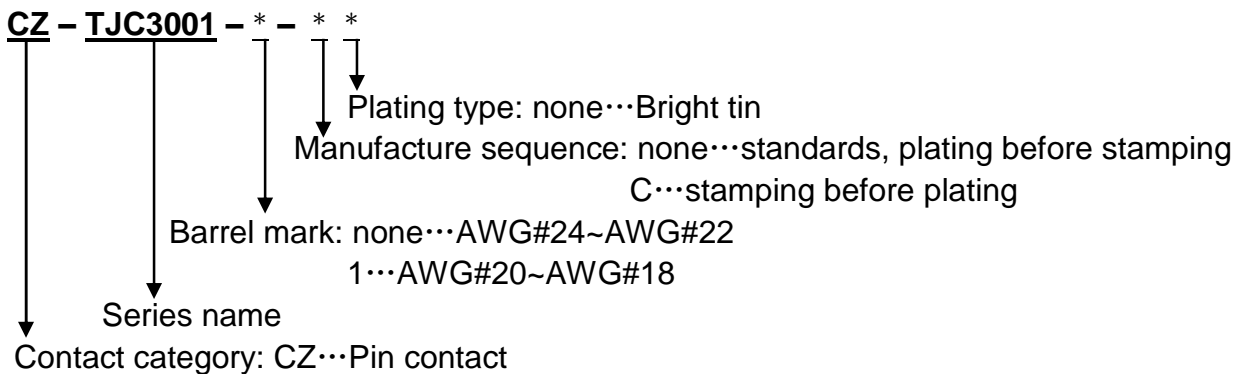
TJC3001 series naming conventions

1. Contact

CH-TJC3001-**, CH-TJC3001-1-**



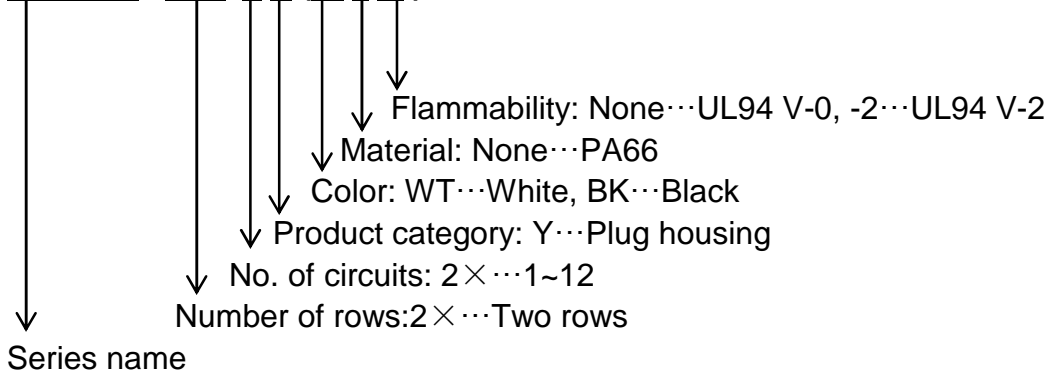
CZ-TJC3001-**, CZ-TJC3001-1-**



2. Housing

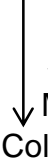
TJC3001-2×nY(**-*)

TJC3001 -m× n Y (* -*)**



TJC3001-2×nARP(-*),TJC3001-2×nAR(**-*)**

TJC3001 -m× n AR * (*_*)**



Series name

Number of rows: 2×···Two rows

No. of circuits: ARP···1~6, AR···2~6

Product category: AR···Receptacle housing

Mounting mark: None···Free hanging, P···Panel mount

Color: WT···White, BK···Black

Material: None···PA66

Flammability: None···UL94 V-0